

**Ilangussaaq 1:** Timmissat Kalaallit Nunaanni piffissamik killilimmik piniarfigineqarsinnaasut, taamalu tamakkiisumik eqqissisimatitaanngitsut.

## Timmissat Nunamiutat

<i>Corvus corax</i>	<b>Tulugaq</b>	Ravn
<i>Lagopus mutus</i>	<b>Aqisseq</b>	Fjeldrype

## Timmissat naluutillit/imarmiut

### *Naajat assigisaaallu*

<i>Larus glaucoides</i>	<b>Naajaannaq</b>	Hvidvinget måge
<i>Larus hyperboreus</i>	<b>Naajarujsuaq</b>	Gråmåge
<i>Larus marinus</i>	<b>Naajarluk</b>	Svartbag
<i>Rissa tridactyla</i>	<b>Taateraag</b>	Ride
<i>Fulmarus glacialis</i>	<b>Qaqulluk</b>	Malleuk

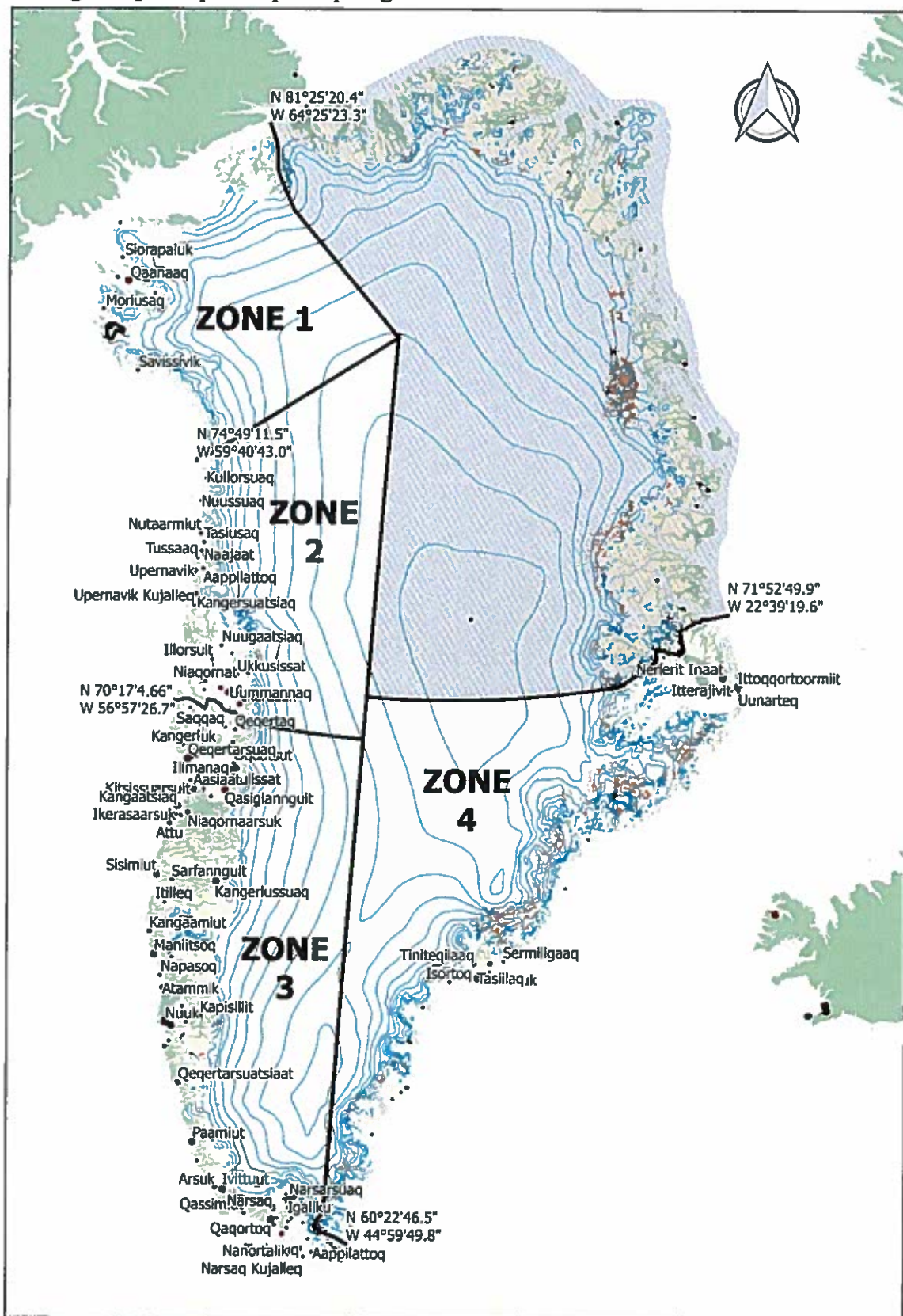
### *Qeerlutuut*

<i>Somateria mollissima</i>	<b>Miteq siorartooq</b>	Edderfugl
<i>Somateria spectabilis</i>	<b>Miteq siorakitsoq</b>	Kongeedderfugl
<i>Clangula hyemalis</i>	<b>Alleq</b>	Havlit
<i>Anas platyrhynchos</i>	<b>Qeerlutooq</b>	Gråand
<i>Anser brachyrhynchus</i>	<b>Nerleq siggukitsoq</b>	Kortnæbbet gås
<i>Anser caerulescens</i>	<b>Kangoq</b>	Snegås
<i>Branta canadensis</i>	<b>Nerlernaarsuk</b>	Canadagås
<i>Branta leucopsis</i>	<b>Nerlernarnaq</b>	Bramgås

### *Allat*

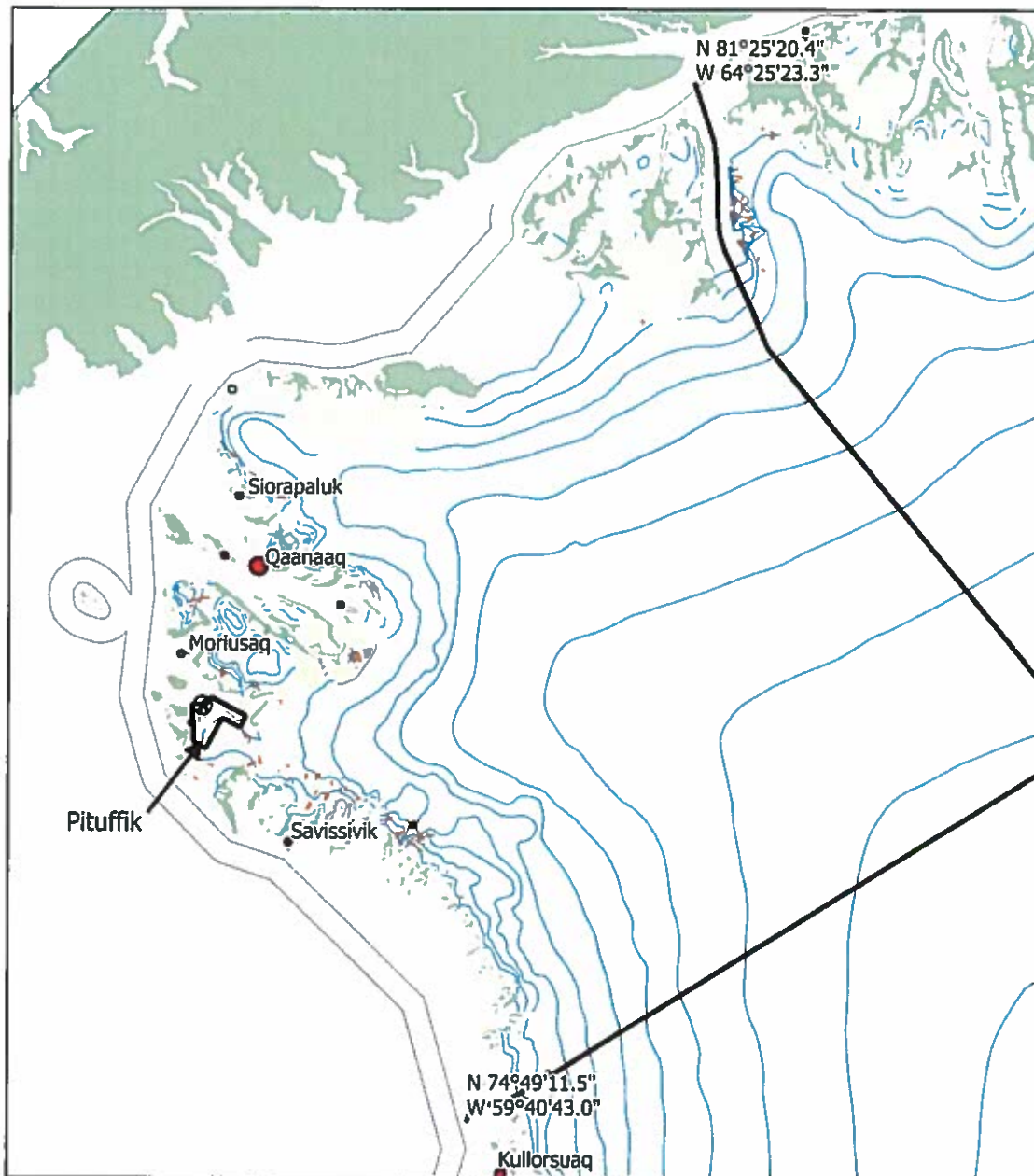
<i>Uria lomvia</i>	<b>Appa</b>	Polarlomvie
<i>Uria aalge</i>	<b>Appa sigguttooq</b>	Atlantisk lomvie
<i>Cephus grylle</i>	<b>Serfaq</b>	Tejst
<i>Alle alle</i>	<b>Appaliarsuk/Appaaraq</b>	Søkonge
<i>Gavia immer</i>	<b>Tuullik</b>	Islom
<i>Phalacrocorax carbo</i>	<b>Oqaatsoq</b>	Skarv

## Ilannugsaq 2: Aqtsiveqarfiit pillugu allattorsimaffik



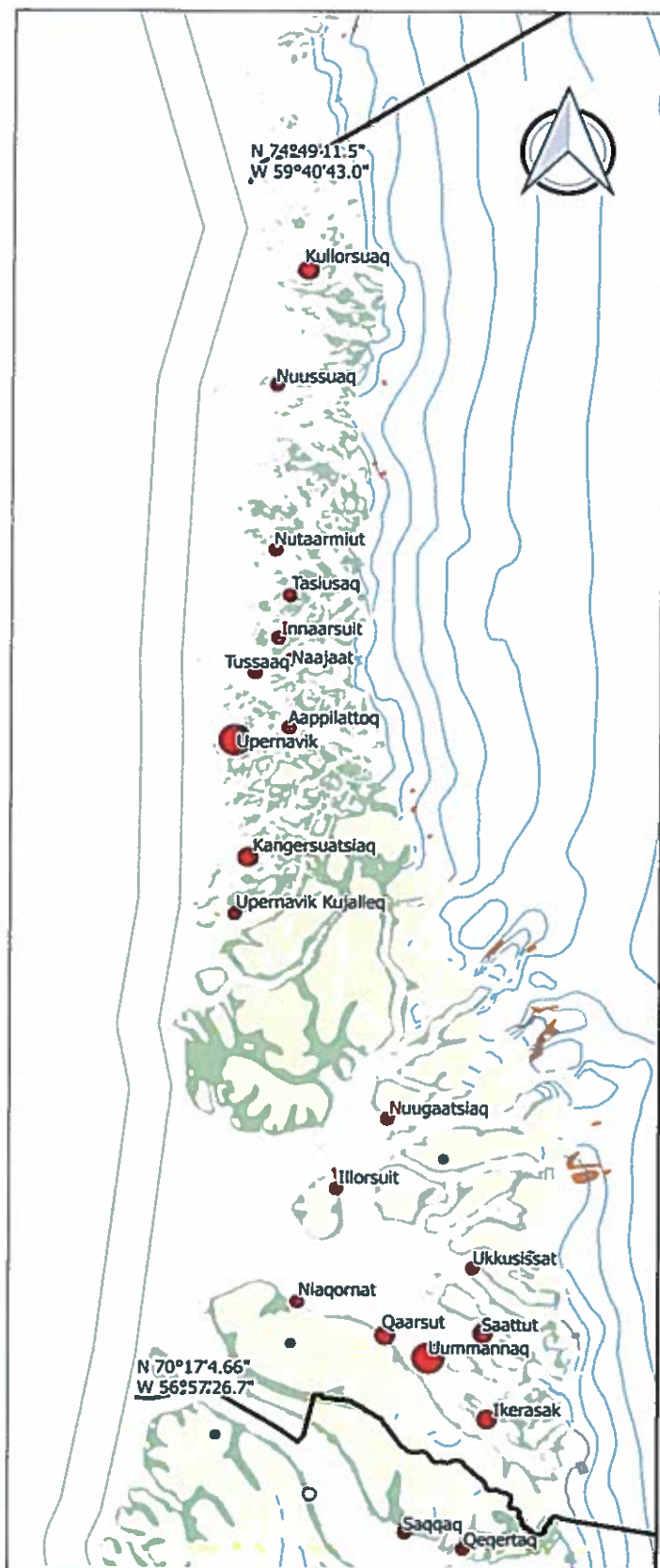
### Ilannugsaq 3: Aqutsiveqarfik nunap immikkoortua zone 1

Zone 1 avannamut Petermann Fjord-imut killeqarpoq naleraq Avannarpassuseq N 81°25'20.4" Kippasissuseq V 64°25'23.3" kujammullu Hammer Ø-mut killeqarluni Avannarpassuseq N 74°49'11.5" Kippasissuseq V 59°40'43.0"-imi.



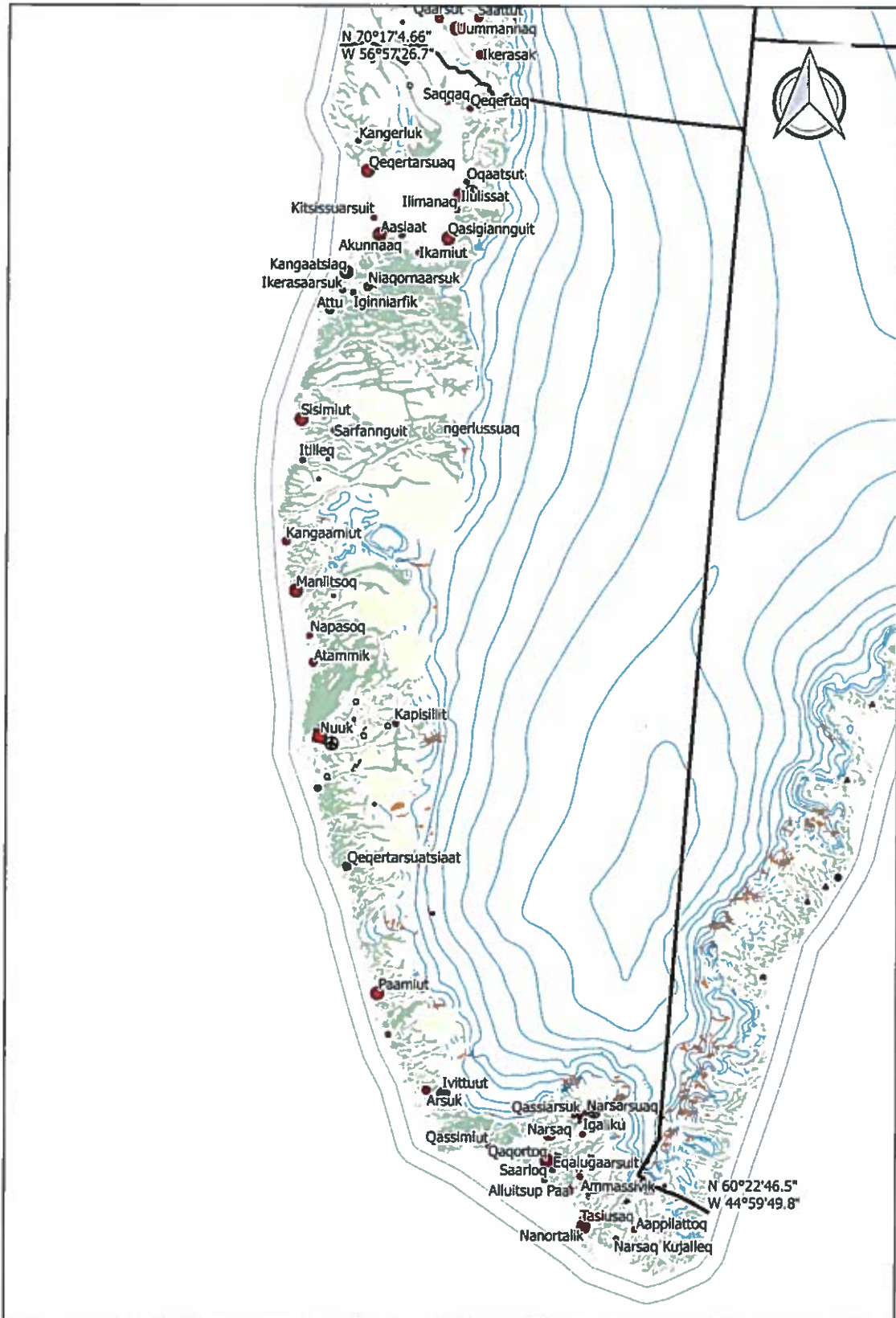
#### Ilanngussaq 4. Aqutsiveqarfik nunap immikkoortua zone 2

Avannamut killeqarfia aqutsiveqarfik zone 2-p kujammut killeqarfia malittaraa Hammer Ø-p nalaani naleraq Avannarpasissuseq N 74°49'11.5" Kippasissuseq V 59°40'43.0". Kujammut Maligaat nalaani killeqarpoq Avannarpasissuseq N 70°17'4.66" Kippasissuseq V 56°57'26.7"



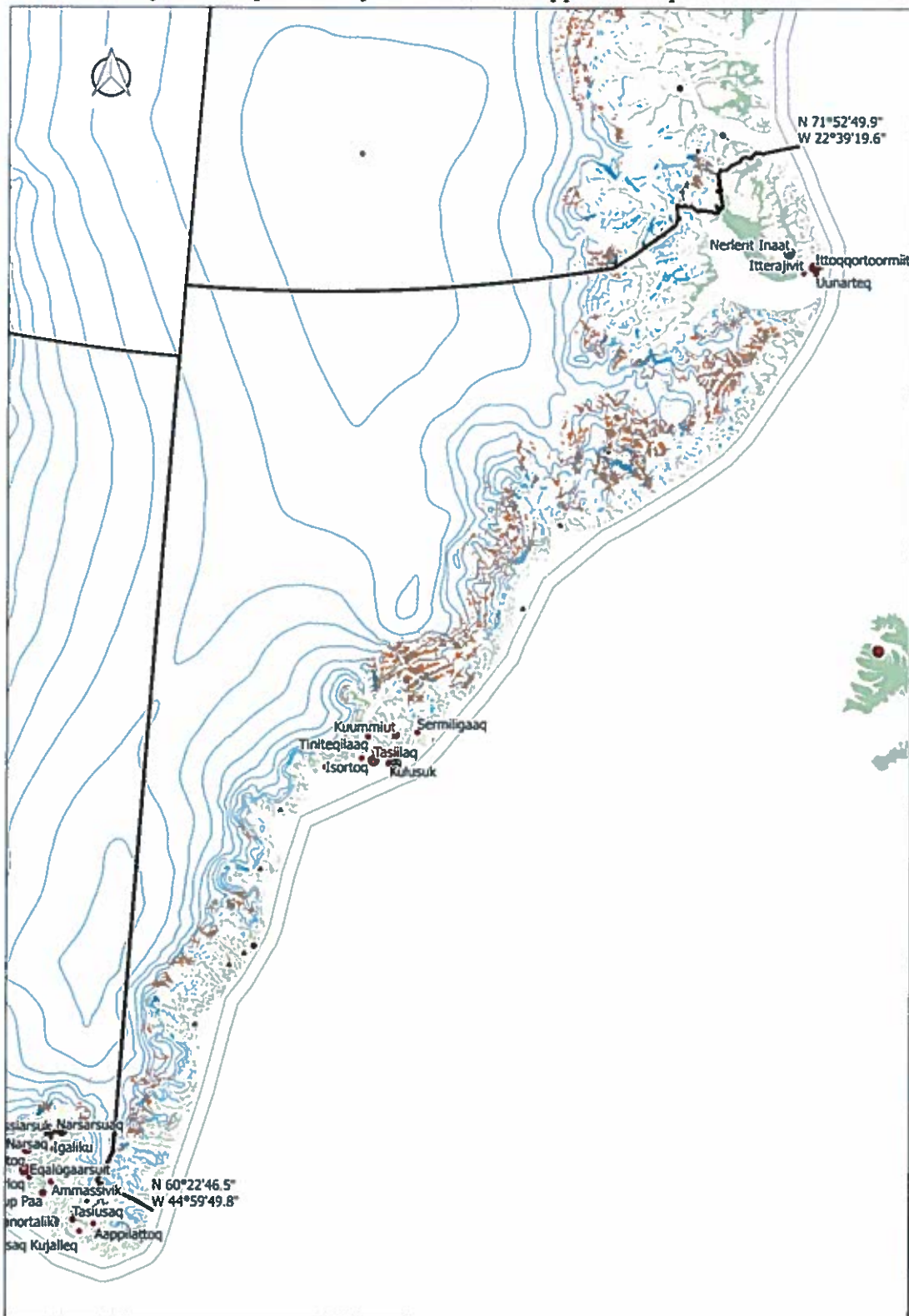
### Ilannugsaq 5 Aqutsiveqarfik nunap immikkoortua zone 3

Avannamut killeqarfia zone 2-p kujammut killeqarfia malillugu Maligaat nalaani naleraq Avannarpasissuseq N 70°17'4.66" V 56°57'26.7". Kujammut killeqarfiaa Kanajoortuut nalaani naleraq Avannarpasissuseq N 60°22'46.5 Kippasissuseq V 44°59'49.8".



## Ilanngussaq 6 Aqutsiveqarfik nunap immikkoortua zone 4

Kujammut killeqarfia aqutsiveqarfik 3-mi killeqarfik malillugu Kanajoorartuut nalaani naleraq Avannarpasissuseq N 70°17'4.66" Kippasissuseq V 56°57'26.7". Avannamut killeqarfiga Kap Biot-i naleraq Avannarpasissuseq N 71°52'49.9 Kippasissuseq V 22°39'19.6".



**Ilanngussaq 7: Timmissat illersugaaffiisa sumiiffii pillugit allattorsimaffik**

<b>Aqutsiveqarfik</b>	<b>Kalaallisut atia</b>	<b>Allatut atia</b>	<b>Timmissat piaqqiorfiata normua timmissat naluutillit pillugit nalunaarsuifimmi nalunaarsuineq naapertorlugu</b>	<b>GPS-ip naleraa</b>
Avanersuaq	Lion Øer	Lion Øer	77001	N 77,4864; W 66,6896
Qaanaaq	Apparsuit	Hakluyt Ø	77002	N 77,4409; W 72,6777
Qaanaaq	Appat	Saunders Ø	76014	N 76,5779; W 70,0382
Qaanaaq	Issuvissuup Appai	Parker Snow Bugt	76013	N 76,1579; W 68,684
Qaanaaq	Appat Appai		76012	N 76,0854; W 68,369
Qaanaaq	Kitsissut	Carey Øer	76007, 08, 09, 11 og 15	N 76,7337; W 73,0527
Qaanaaq	Saattut	Sabine Øer	75001	N 75,294; W 60,132
Upernavik	Kitsissorsuit	Edderfugleøer	74001, 74002 og 74003	N 74,043; W 57,773
Upernavik	Kitsissut		73001	N 73,116; W 56,440
Upernavik	Uigorluk	Lilleflad Ø	72040	N 72,3076; W 55,9161
Upernavik	Nunanguit	Smålandene	72030, 72132, 72133, 72134	N 74,043; W 57,773
Upernavik	Kingittoq		72014	N 72,6552; W 55,8845
Upernavik	Kuup Apparsui	Kap Schackleton	73010	N 73,7938; W 56,8158
Upernavik	Kippaku Apparsui	Kippaku	73009	N 73,7196; W 56,6317

Upernavik	Issortusoq		72015	N 72,247; W 55,698
Upernavik	Timmiakulussuit		72011	N 72,6639; W 55,7551
Uummannaq	Qeqertat	Schades øer	71043, 71044, 71053, 71078 og 71079	N 71,39; W 53,84
Ilulissat	Innaq	Ritenbenk	69049	N 69,8074; W 51,3727
Ilulissat	Naajaat		69033	N 69,9669; W 51,1675
Qeqertarsuaq	Assissut	Brændevinsskær	69001	N 69,0638; W 53,5169
Aasiaat	Niaqornaq, Innarsu- atsiaaq og Basis Ø	Grønne Ejland	68244, 68245, 68247	N 68,8461; W 51,9469
Aasiaat	Saattuarsuit		68030	N 68,8653; W 53,0917
Aasiaat	Nunatsiaq	Rotten	68010	N 68,8639; W 53,4168
Kangaatsiaq/ Qasigiannuit	Tasiusarsuaq		68078-68082, 68100-68102, 68161, 69162, 68164, 68179-68186	N 68,38; W 51,33
Kangaatsiaq			67103	N 67,9945; W -53,7986
Maniitsoq	Taateraaf		65019	N 65,9969; W -52,546
Maniitsoq	Sermilinnguaq		65015	N 65,6606; W 52,6464
Maniitsoq	Sermilinnguaq		65013	N 65,6734; W 52,598
Maniitsoq	Innarsuaq	Isortoq	65003	N 65,4586; W 52,1368

Nuuk	Qeqertannguit		64035	N 64,5033; W 51,3333
Nuuk	Innajuattoq		64019	N 64,733; W 50,6917
Nuuk	Nunngarussuit		63010	N 63,7647; W 51,7269
Paamiut	Taateraarunnerit	Fox Faldet	61002	N 61,3264; W 48,0029
Qaqortoq		Indre Kitsissut	60030	N 60,8667; W 48,3833
Qaqortoq	Kitsissut Avalliit	Ydre Kitsissut	60012	N 60,7561; W 48,4253
Nanortalik	Qeqertat		59004	N 59,8898; W 43,4649
Ittoqqortoormiit	Kangikajik	Kap Brewster	70508	N 70,1525; W 22,0656
Ittoqqortoormiit	Appalik	Raffles Ø	70505	N 70,5973; W 21,5066
Nationalparken	Nuna allanngutsaa-liugaq	Sandøen	74501	N 74,2670; W 20,1501
Nationalparken	Nuna allanngutsaa-liugaq	Prinsesse Margrethe Ø	81502, 003, 004, 016, 017	N 81,0215; W 13,1725

**Ilanngussaq 8: Sumiiffiit timmissanik illersuiffiit nunap assinga allattorsimaffik**

