

B. National Legislation

1. Myanmar

The Law amending the Territorial Sea and Maritime Zones Law
(The State Peace and Development Council Law No.8/2008), 5 December 2008¹

1. This Law shall be called “the Law Amending the Territorial Sea and Maritime Zones Law”.
2. After Clause 3 of the Annex to the Territorial Sea and Maritime Law, Clause 4 and Clause 5 shall be inserted as follows:

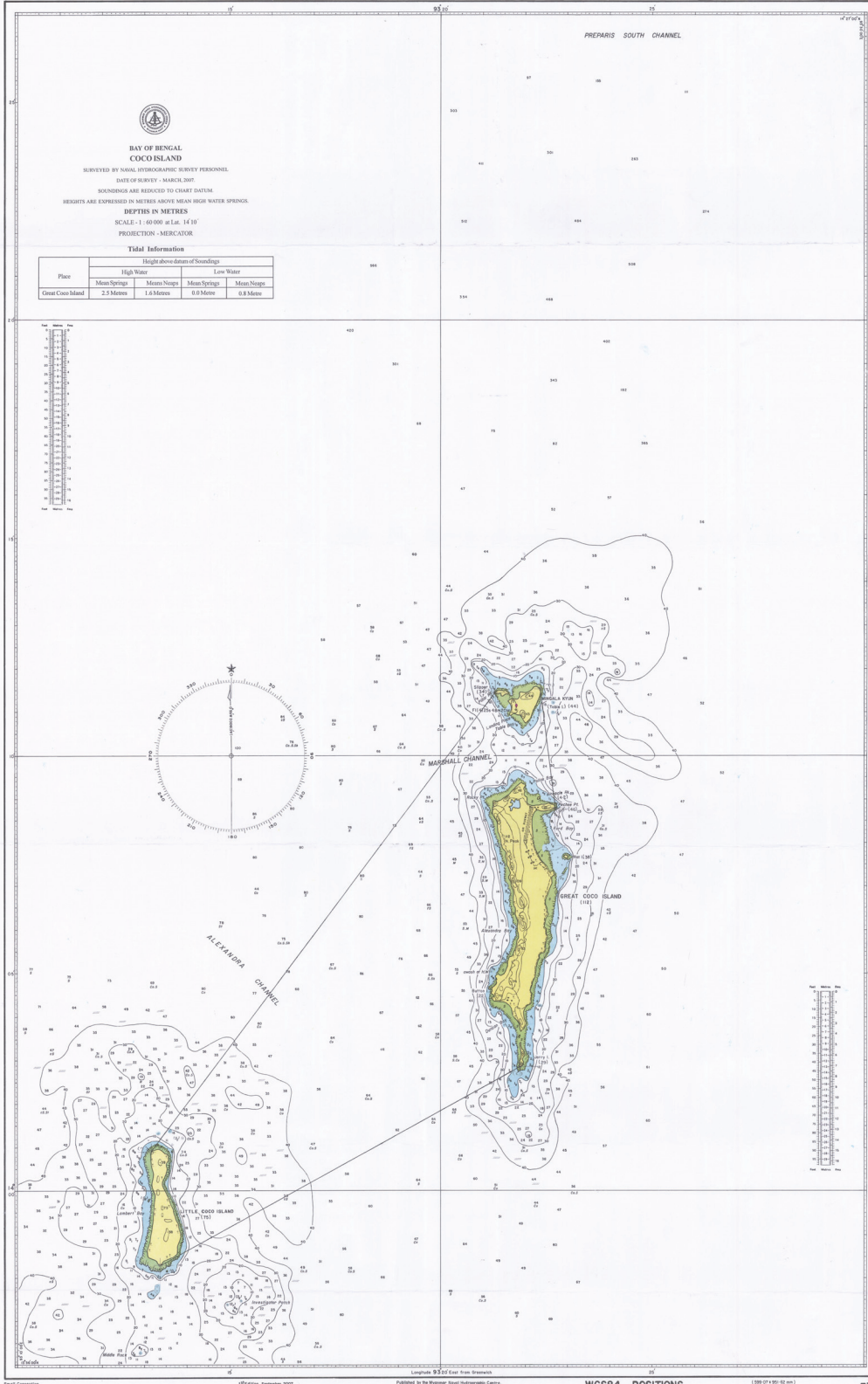
“4. Preparis Islands				
(a) North Western Point of Cow and Calf Island	Lat.	14°	56’	07”N
	Long.	93°	38’	46”E
(b) Western Point of Ohn Pin Island	Lat.	14°	52’	15”N
	Long.	93°	34’	08”E
(c) North Western Point of Thee Phyu Island	Lat.	14°	51’	40”N
	Long.	93°	34’	12”E
(d) North Western Point of Sin Island	Lat.	14°	50’	56”N
	Long.	93°	34’	10”E
(e) North Western Point of Lu Gaung Island	Lat.	14°	47’	24”N
	Long.	93°	32’	59”E
(f) Southern Point of Lu Gaung Island	Lat.	14°	47’	08”N
	Long.	93°	33’	00”E
(g) Southern Point of Preparis Island	Lat.	14°	50’	17”N
	Long.	93°	36’	40”E
(h) North Eastern Point of Preparis Island	Lat.	14°	53’	54”N
	Long.	93°	38’	35”E
(i) Eastern Point of Cow and Calf Island	Lat.	14°	55’	52”N
	Long.	93°	39’	06”E
5 CoCo Islands				
(a) North Eastern Point of Mingalar Island	Lat.	14°	11’	33”N
	Long.	93°	22’	20”E
(b) Western Point of Slipper Island	Lat.	14°	11’	28”N
	Long.	93°	21’	17”E
(c) North Western Point of Little Co Co Island	Lat.	14°	00’	55”N

¹ Transmitted by the Permanent Mission of the Union of Myanmar to the United Nations through note verbale dated 10 December 2008 addressed to the Secretary-General of the United Nations. Law No. 8/2008 supplements the Territorial Sea and Maritime Zones Law of 1977 of the Union of Myanmar. Original: English.

The text of Territorial Sea and Maritime Zones Law, 1977, Pyithu Hluttaw Law No. 3 of 9 April 1977 can be consulted at: <http://www.un.org/Depts/los/LEGISLATIONANDTREATIES/STATEFILES/MMR.htm>

(d) Southern Point of Little Co Co Island	Long.	93°	13'	09"E
	Lat.	13	58'	18"N
(e) Southern Point of Jerry Island	Long.	93°	13'	22"E
	Lat.	14°	02'	54"N
(f) North Eastern Point of Great Co Co Island	Long.	93°	21'	52"E
	Lat.	14°	08'	48"N
	Long.	93°	22'	41"E
	Lat.	14°	08'	48"N

WGS84 POSITIONS
can be plotted directly on this chart



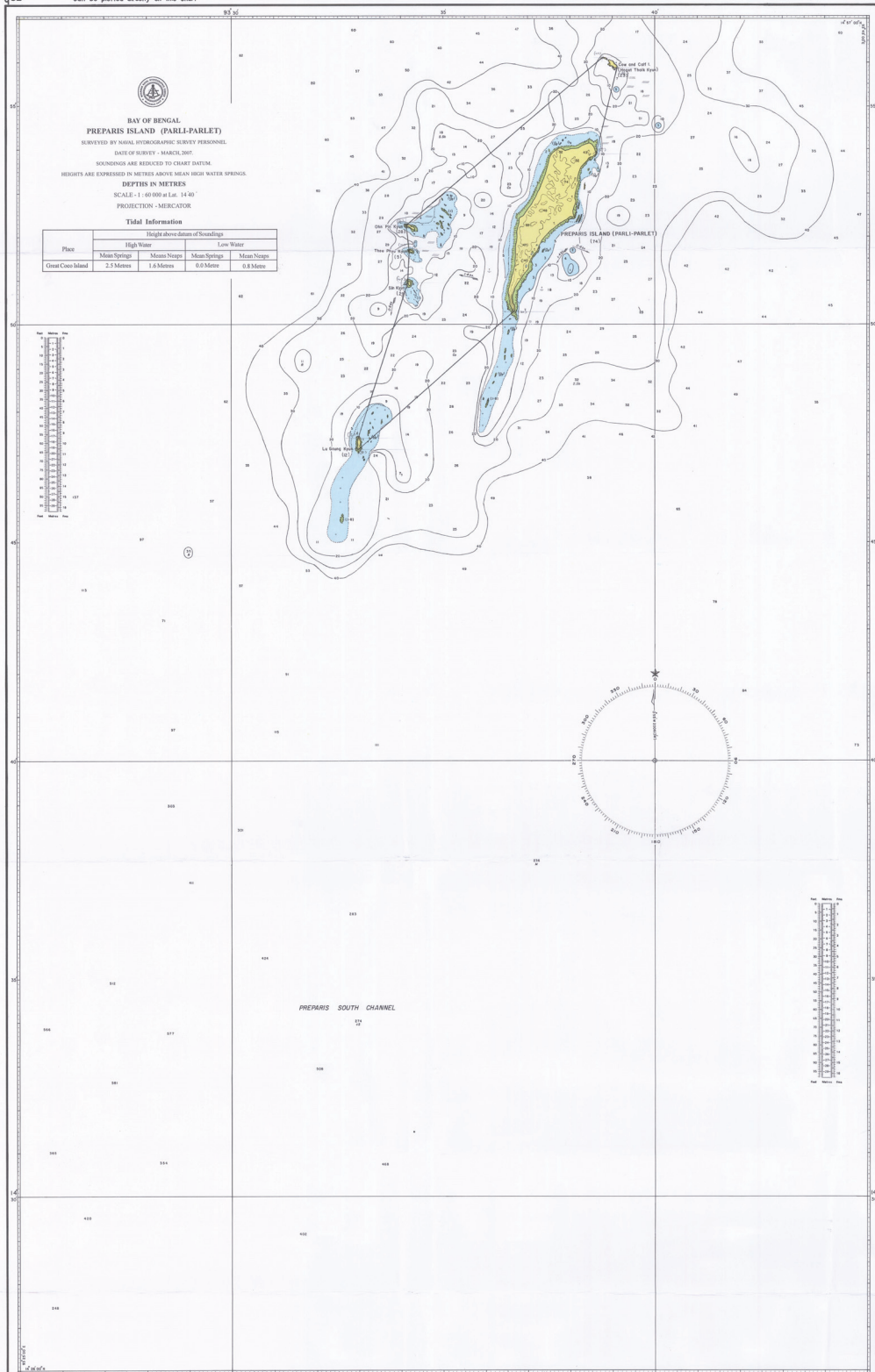
**BAY OF BENGAL
COCO ISLAND**
 SURVEYED BY NAVAL HYDROGRAPHIC SURVEY PERSONNEL
 DATE OF SURVEY - MARCH 2007
 SOUNDINGS ARE REDUCED TO CHART DATUM
 HEIGHTS ARE EXPRESSED IN METRES ABOVE MEAN HIGH WATER SPRINGS
DEPTHS IN METRES
 SCALE - 1:60 000 at Lat. 14 30'
 PROJECTION - MERCATOR

Tidal Information
Height above datum of Soundings

Place	High Water		Low Water	
	Mean Springs	Mean Neaps	Mean Springs	Mean Neaps
Great Coco Island	2.5 Metres	1.6 Metres	0.8 Metre	0.8 Metre



WGS84 POSITIONS
can be plotted directly on this chart



WGS84 POSITIONS
can be plotted directly on this chart

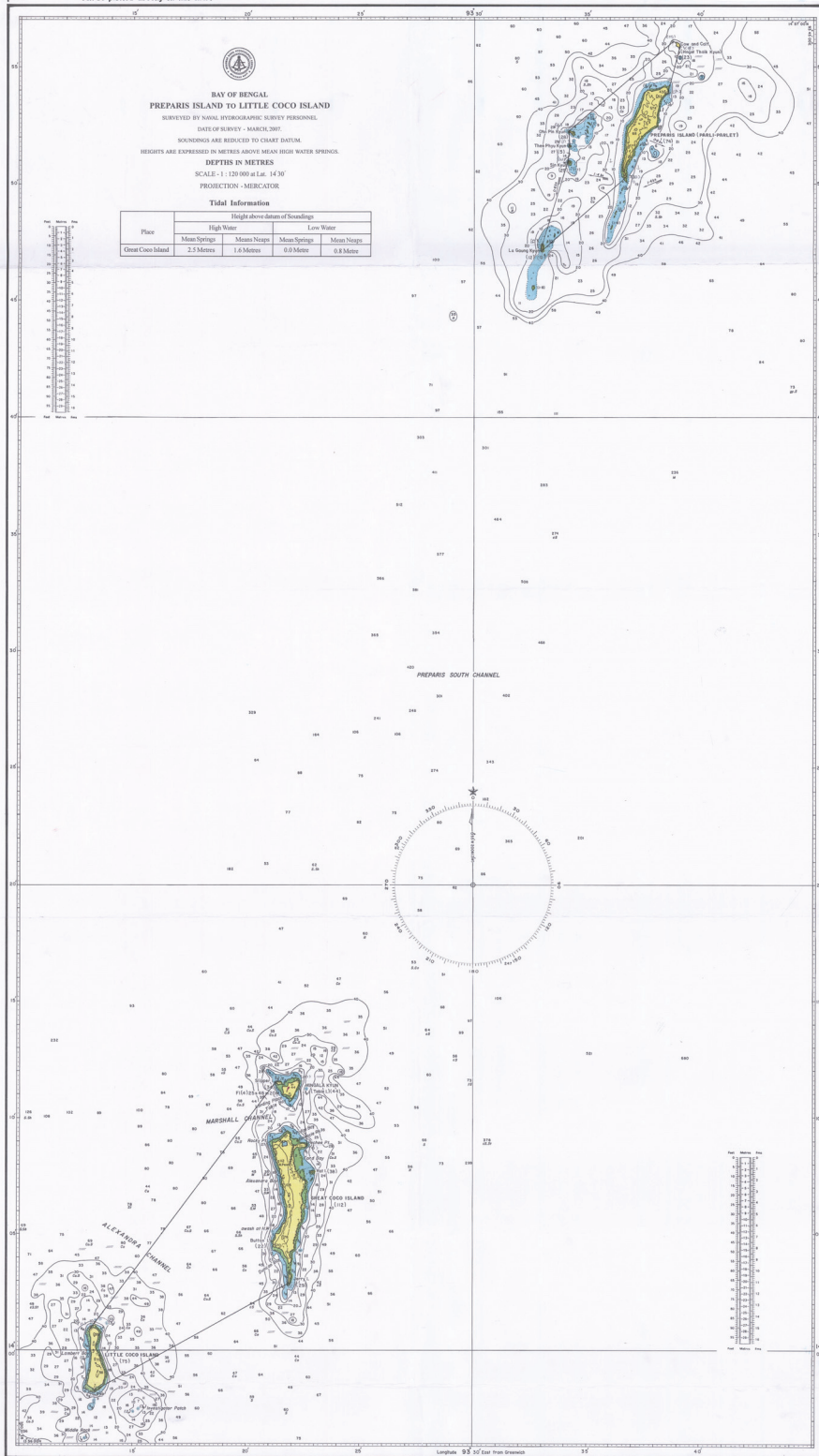


Chart Correction

1st Edition August, 2005

Longitude 93° 57' East from Greenwich
Published by the Hydrographic Survey Centre

WGS84 POSITIONS
can be plotted directly on this chart

(504-001-197) (1:120,000)