

2010 – 2008

i	()	
ii		
1		-1
7		-2
21		-3
28		-4
45		-5
58		
154		-6
174		-7
181		-8

:(1)

:(2)

:(3)

:(4)

:(5)

31	2008	/	1		
/	31			.2010	/
					2007

.2008

2007

2010 - 2008

2007

17 "

2007

. ()

.

. DFID

2009

.

.

.

.

.

2010-2008

2010-2008

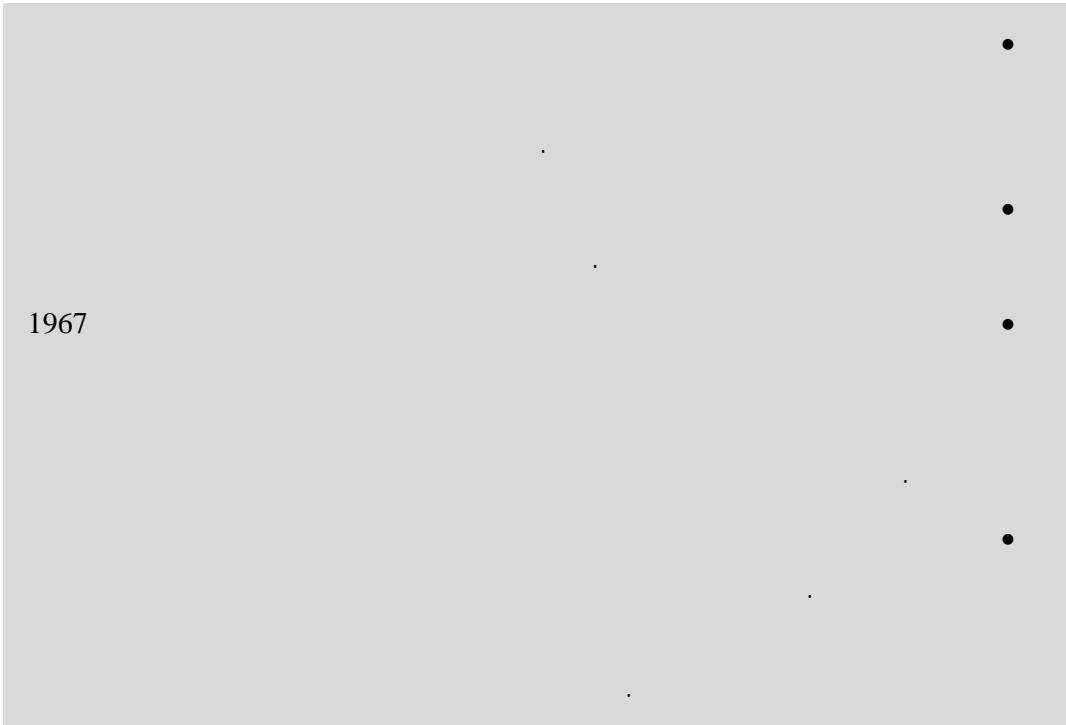
-
-
-
-
-
-
-
-

2007

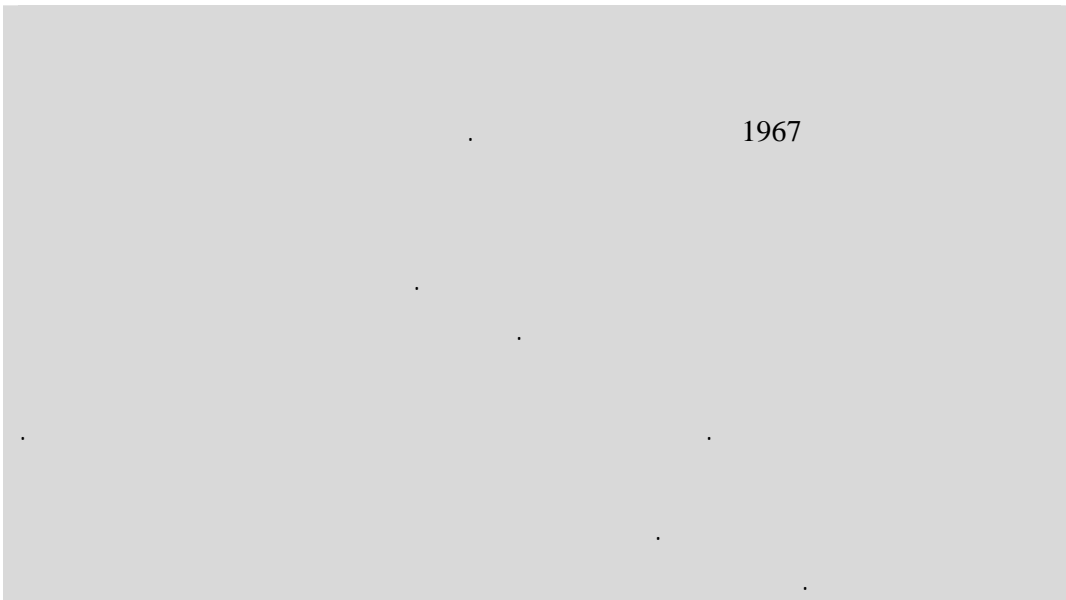
2007

) 2005 /
.(

:(1)



:(2)



(3)

:(3)



.()

2000

" "

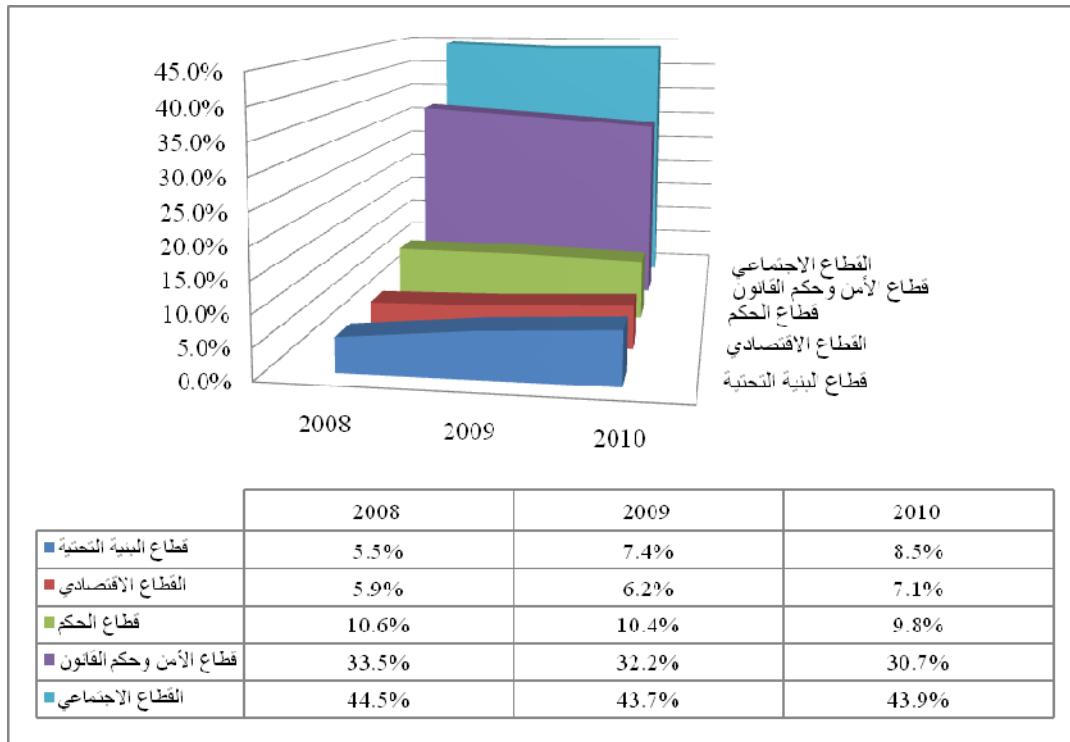
2007 2006

.2008

%11.3
.2005

			2010-2008	
		2010 – 2008		
%10.8	2007		%6.1	
				.2010
			(1)	
2007			2010	%30
	2008	–		
		%44		

(1):



2008 . 492 1,634

2009 2 (1)

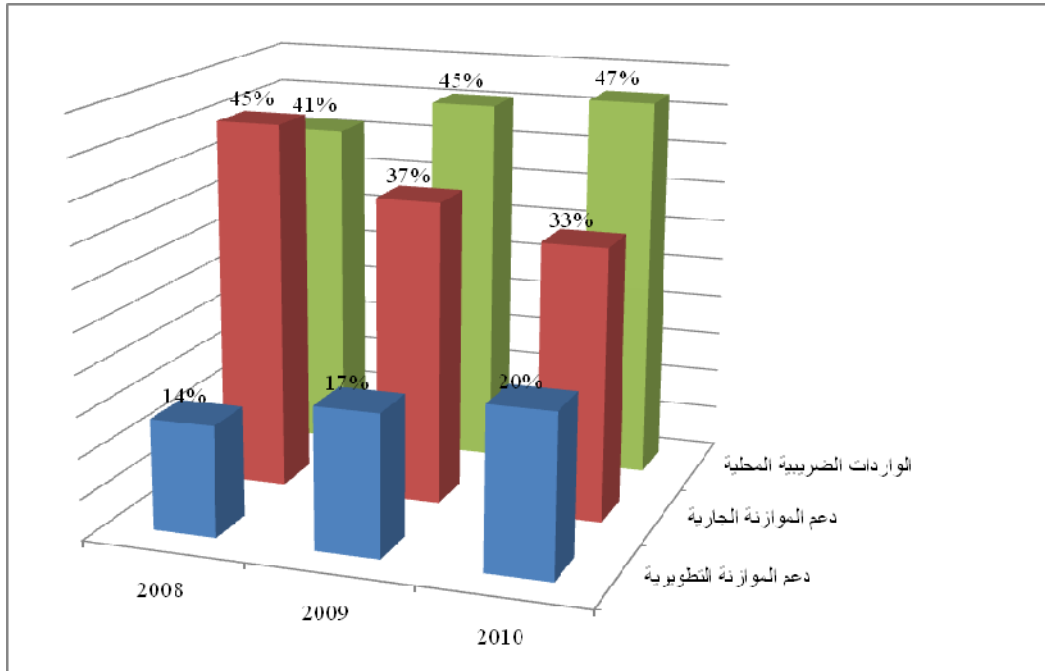
2010 .

(1):

2010	2009	2008	2007	2006	
					()
1,301	1,361	1,634	1,012	741	
769	634	492	310	281	
2,070	1,995	2,126	1,322	1,022	
2006 :					

(2)

:(2)



2010 – 2008

1994 /

.2010-2008

3-4)

(

2007

.2008

2008

-1

2010-2008

2010-2008

1-1

)

(

)

.(

)

:(

.

•

•

.(

)

•

.

•

.

.

.

.

.

.

.

2010-2008

.

.

2-1

2010-2008

2007

3-1

/

.(

) 2005

2007

()
()

4-1

:

)

(

-2

2010-2008

1-2

1994

2000

1999

:

1-1-2

1995
 (%40 %2
 (%26 ()
 (%)
 %72
 .(1-2) %17.2

:(1-2)

(1999)	(1998)	(1995)	
%17.2	%9.1	%2.0	()
%23.8	%20.9	%26.0	()
%59.0	%70.0	%72.0	()

()
 2000
 2002
 .()

()

2-1-2

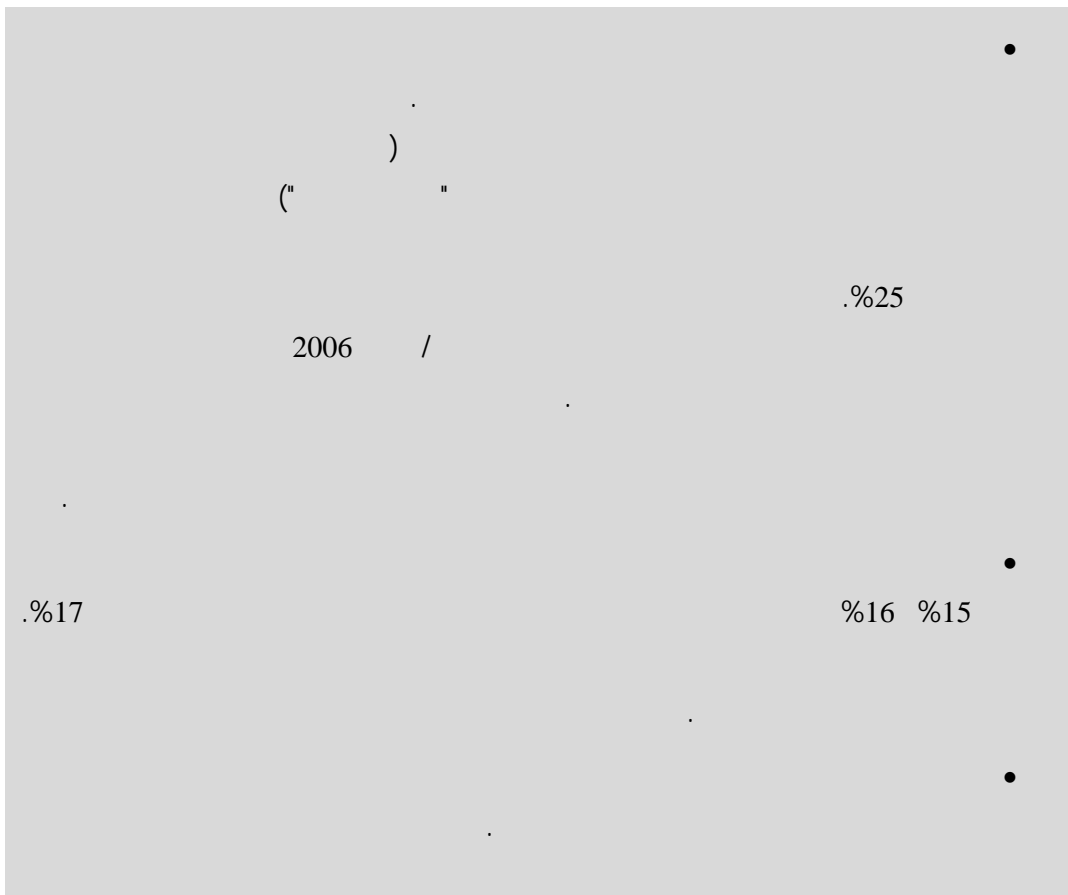
/ (" ")

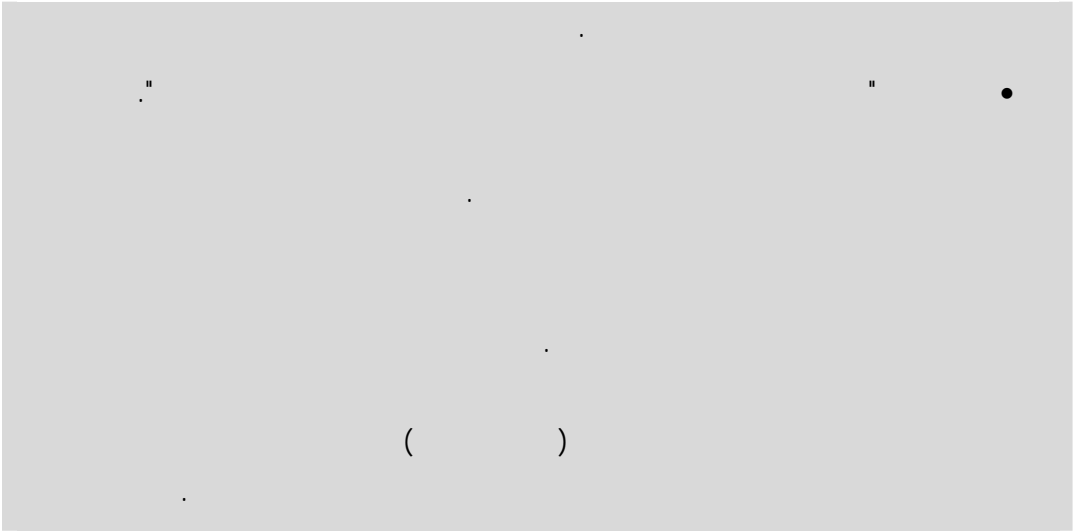
1994

- .

. 1-2

:(1-2)





.2005

2002

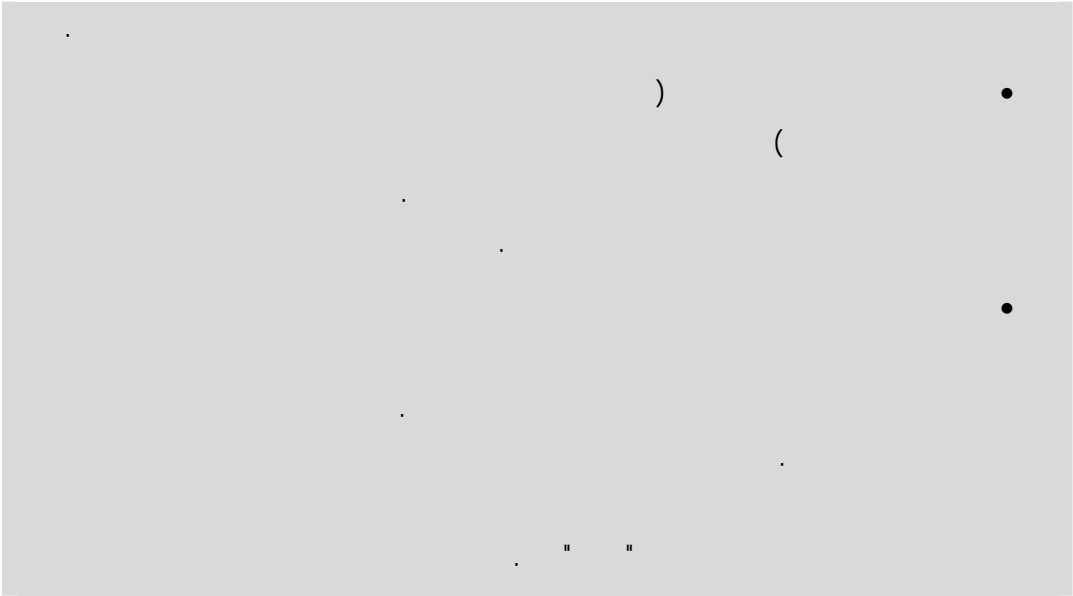
1.5

—

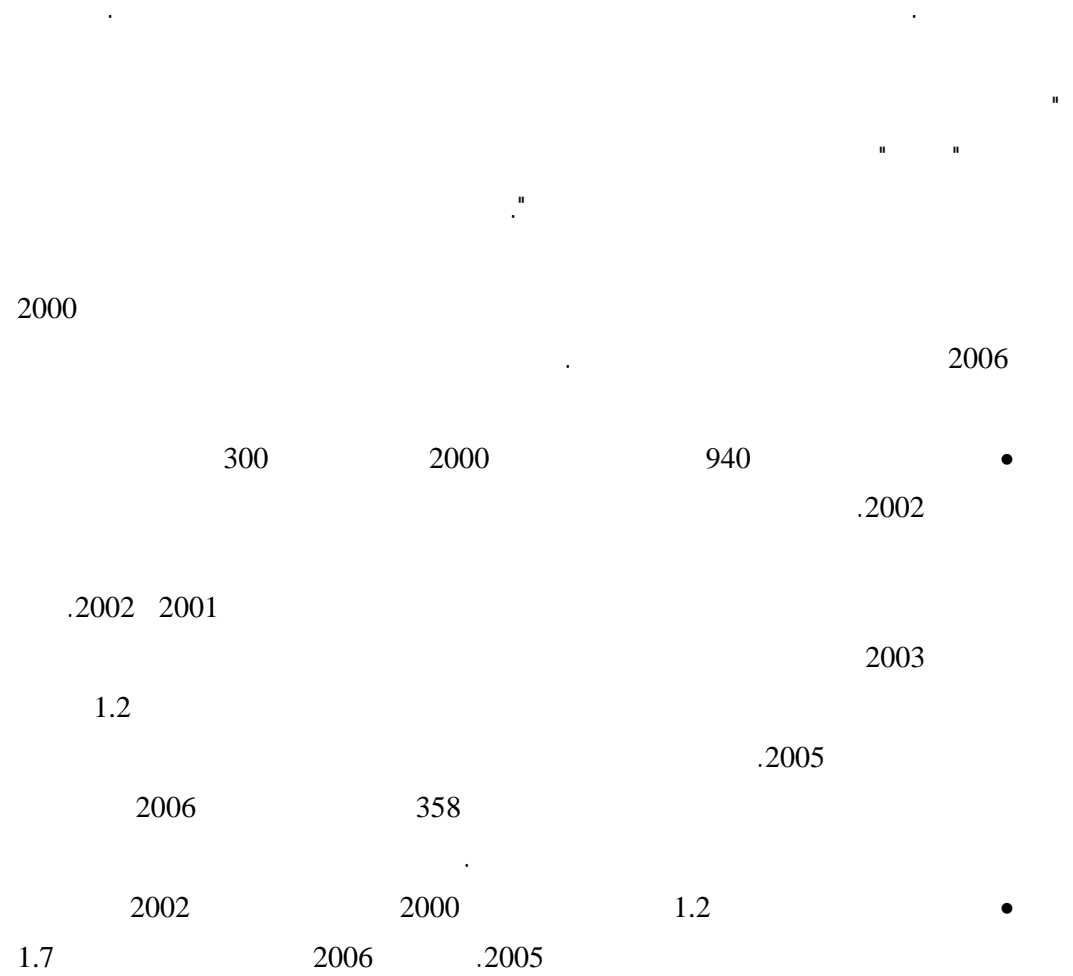
2-2

:(2-2)





3-1-2



2000 – 5.1 – 2007
 %54 2.7)
 0.62) ((%17
 " (%10 0.53) (%24 1.2) "
 2006

2005

%50

4-1-2

•

•

•

•

5-1-2

40

.()

" "

" 2002 ()

2005 /

2006

2-2

2006

" "

.2006 /

35

.2007 / 2006 /

2007 /

.2007 / 17

" "

" "

2007 /

2007 17

-

" "

2006

2008

2007

2007 /

2007 /

.2008

3-2

.2010-2008

1-3-2

4,512

1999

2000

3,557

.2005 2004

.2002

.2006

3,901

2007

.1999

%14

.1999

%40

%8

2000 1995

- 2007

-

2006 2005

%0.6

2006 2005 %15 .2007

2006 2005

12

()

2005 / %95

()

2007 / 3,900 195

35,000 4,200 .2005

2-3-2

%33

.2000

%10

%23

%19

.2004

—

%35

1998

%22

%67

2007

.2006

2007 /

(594)

2,300

10

8

.2005

%63

.2006

%63

%80

%6.5

2005

64,000

2000

116,000

) 150,000

115,000

.2007

1999 %80 .(.2007

3.77 2008 / 1.42 () 2.35

.%75 . 2002 4.9 1990 6.3

%3.4 .

. .

%13) 100 10 .2005 %31

2007 2000 %8 .(%8

2006 .2004 %42

%75 .

29 10

.()

.%34

-3

.2007 /

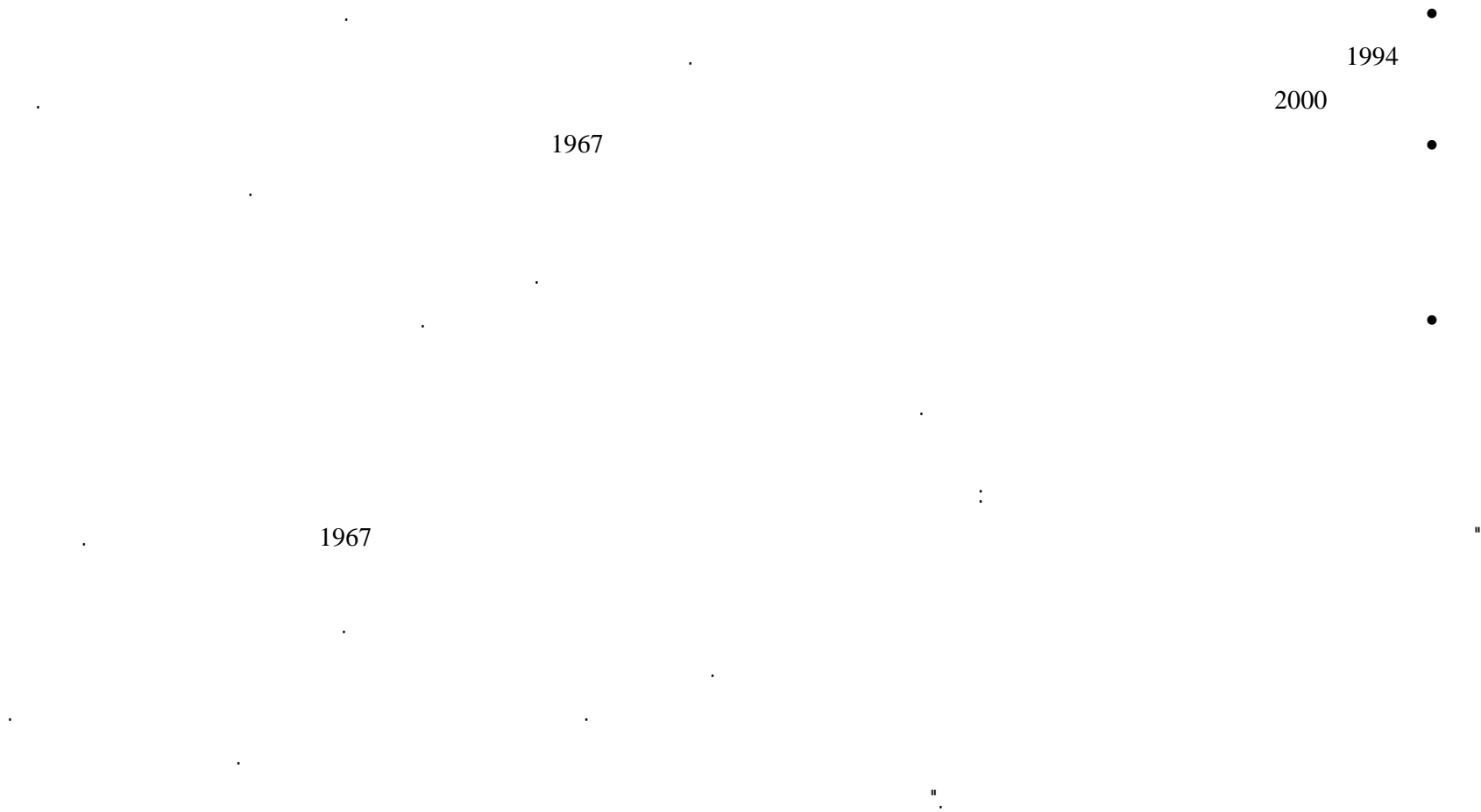
2008-2006
2007 /

2008-2006 2007-2005

1.3

:

•



2-3

1-2-3

). .

.(

2-2-3

(1-3)

3-3-3

(2-3)

\vdots	\bullet	\vdots	\bullet
	\bullet		\bullet
\vdots	\bullet	\vdots	\bullet
	\bullet		\bullet

(3-3)

\bullet

	•
	•
	•

4-3-3

3-3

()

()

-4

.2010 2008

.

:

•

•

•

1-4

-

-

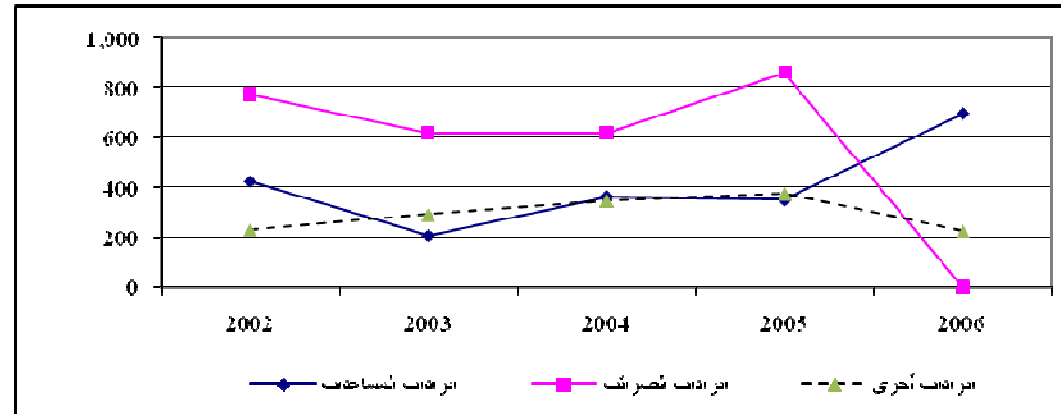
2006

2007 /

2006 2002 (1-4)

2006 400

() :(1-4)



(2-4)

.2004

()

: (2-4)



(1-4)

4.1

3.9

2006

2001

2006

%4

(1-4)

2006	2005	2004	2003	2002	2001	
%8.1	%6.9	%7.5	%7.8	%7.6	%8.9	
%12.9	%12.5	%13.3	%13.3	%16.3	%15.7	
%2.5	%2.7	%2.4	%2.4	%1.9	%2.2	
%9.3	%8.3	%8.5	%8.5	%9.8	%10.6	
%11.3	%10.2	%10.5	%9.8	%9.8	%8.1	
%4.5	%4.2	%4.0	%4.0	%4.2	%3.5	
%22.9	%24.4	%24.7	%25.1	%25.3	%25.4	
%13.5	%17.7	%17.3	%17.4	%16.3	%16.1	
%14.8	%13.0	%11.9	%11.6	%8.8	%9.6	
4,107	4,503	4,248	3,995	3,556	3,918	

(1/)

%66

2003

%23

%65 - %60

2006

2006 2005
470

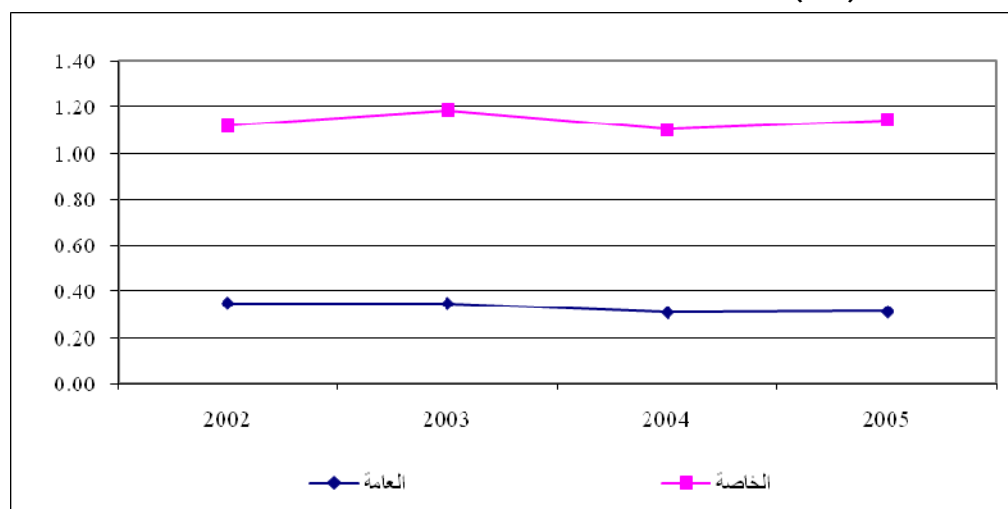
(2/)
2006 491 2005 266

%120

%70 - %60

(3-4)

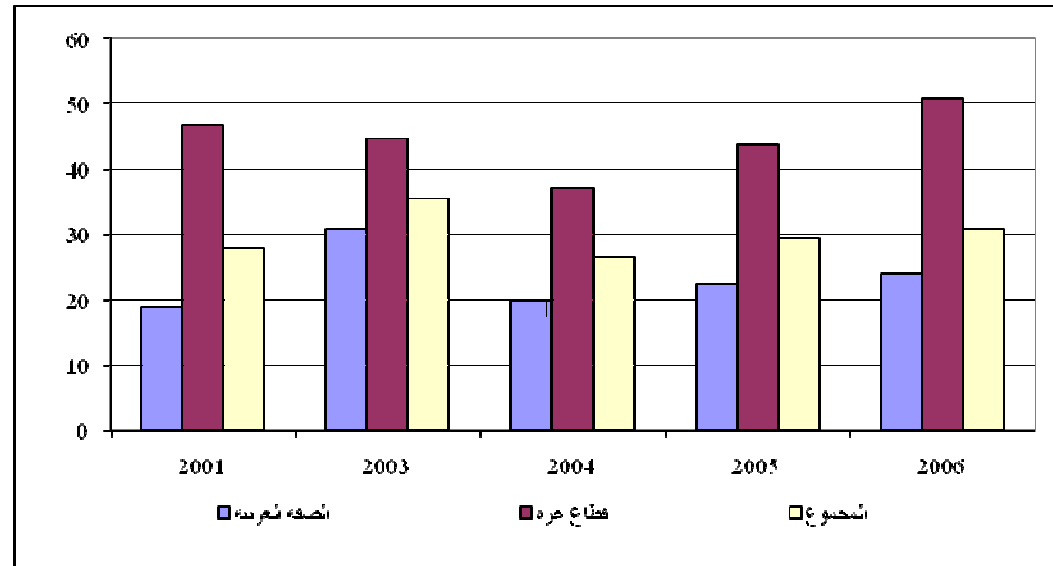
:(3-4)



(4-4)

2006 %50 %38 2004

: (4-4)



2-4

.(United Nations Conference on Trade and Development (UNCTAD))

3-4

1-3-4

) .2010

.(

∴

—

(

—

)

2008

2007

.2010

.(2006

)

.2010

4.4

(2-4)

3.6

4.7

%11 %4-

2010 – 2008

:(2-4)

2010			2009			2008			
4,726	4,401	3,649	4,273	4,157	3,622	4,017	3,987	3,679	()
11%	6%	1%	6%	4%	-2%	4%	3%	-4%	

-3,199	-2,884	-2,673	-2,787	-2,761	-2,665	-2,578	-2,654	-2,641	()
826	784	697	754	732	680	705	697	671	()

(4/)

500 87,000

—

2-3-4

(3-4)

4-4

.2010 %41.2 %50.3

2010 2009 %2

()

- : (3-4)

2010	2009	2008	2007	2006	2005	
(%)						
25.7	25.4	24.4	23.6	25.4	27.5	
41.2	43.5	46.7	50.3	50.2	44.5	
21.6	23.0	24.3	25.4	26.3	22.4	
14.4	14.7	15.8	14.4	16.5	14.5	()
5.2	5.8	6.6	10.6	7.4	7.7	
-15.5	-18.2	-22.3	-26.7	-24.9	-17.0	-
18.3	20.7	26.8	20.0	16.3	7.8	
-10.7	-9.6	-7.1	-4.9	-5.6	-6.4	-

10.8	9.7	8.1	6.1	6.2	6.4	
(%)						
12.2	10.7	9.0	6.7	6.4	7.4	()
17.1	16.7	16.4	15.6	14.7	16.7	()
(%)						
6.5	5.5	3.3	0.0	-4.8	6.0	
2.5	3.0	3.5	6.9	3.3	2.3	()

.(5) :)

.(

.%15.5

%26.7

.2005

%6.1

.2010 %18.3

.2010 %10.8

2010

%6.5

2008

%3.3

.2009

.

.

.

.

.2010

%10

%50

.

.

.(2006

)

.

.

4-4

(4-4)

.

.

.

.

.



:(4-4)

2010	2009	2008	2007	2006	
					()
1,832	1,665	1,486	1,194	1,149	
516	469	419	298	379	
1,316	1,196	1,067	896	770	
2,935	2,858	2,846	2,544	2,277	
1,541	1,511	1,481	1,283	1,193	
1,022	969	964	725	747	
373	379	400	535	337	
-1,103	-1,193	-1,360	-1,350	-1,128	()
-194	-164	-217	-23	887	:
-	-	-	-422	473	
-1,297	-1,357	-1,577	-951	-714	()
1,301	1,361	1,634	1,012	741	:
4	4	57	61	27	
769	634	492	310	281	:
-765	-630	-435	-249	-255	
765	630	435	249	255	
-	-	-	78	146	
-	-	-50	-132	-172	
769	634	492	310	281	
-4	-4	-4	-	-	

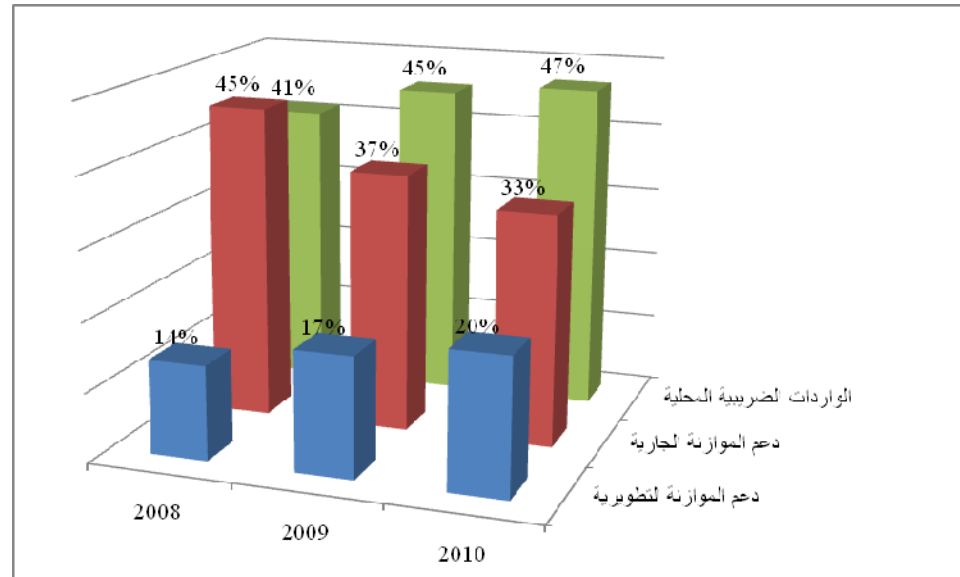
-	-	-	-6	-8	
---	---	---	----	----	--

:(5-4)

2010	2009	2008	2007	2006	
					()
1,301	1,361	1,634	1,012	741	
769	634	492	310	281	
2,070	1,995	2,126	1,322	1,022	
2006 :					

(5-4)

:(5-4)



-5

-

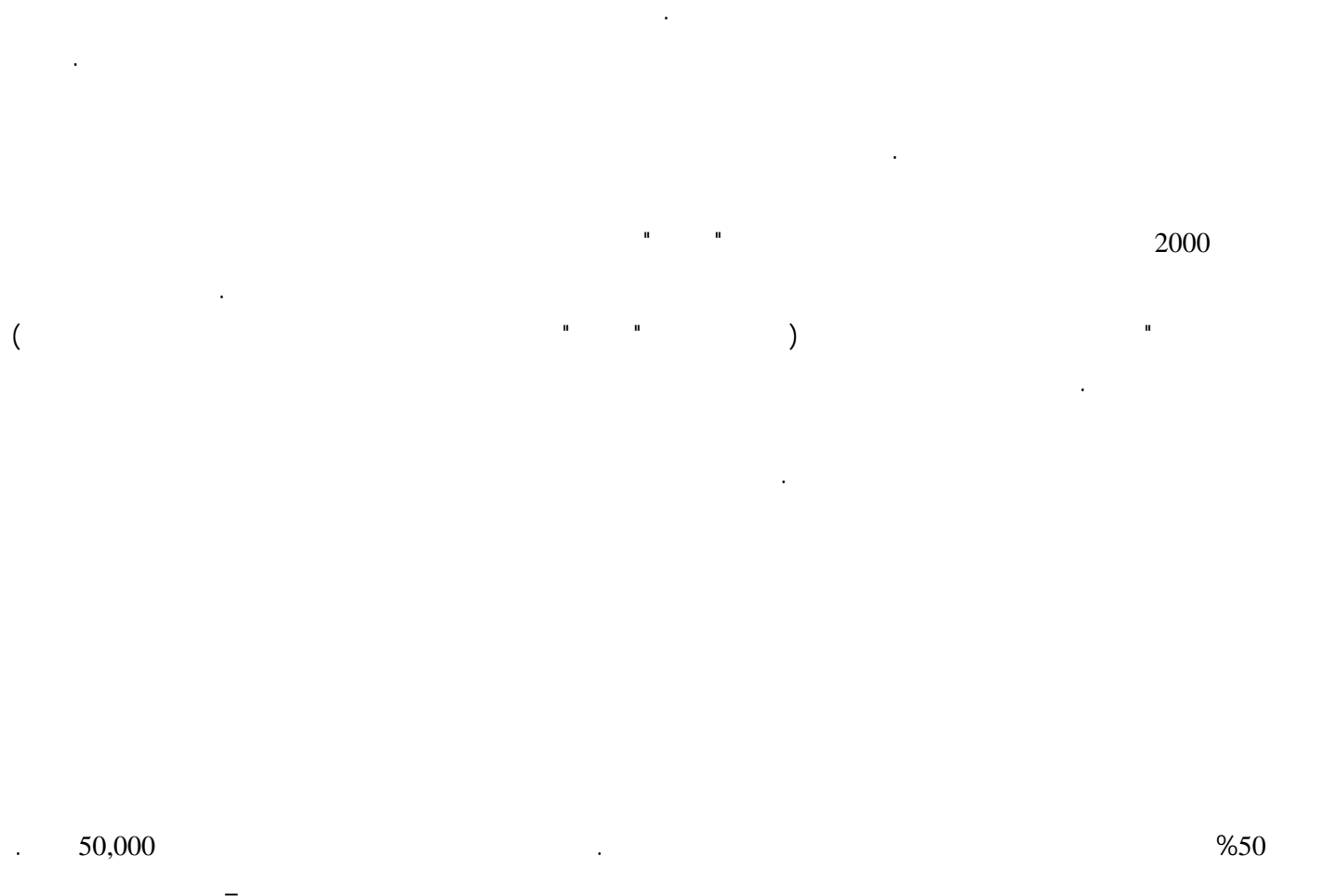
1-5

1-1-5



()

2-1-5



%40

.()

2000

2007

1.3

2006

()

()

3-1-5

.()

2000 /

"

"

2008

.2007

20,000

(

)

2008

2008

257

2008

||

•

•

$$\cdot (\quad)$$

•

$$\cdot (\quad)$$
$$\cdot (\quad)$$

•
•
•
•

2007

.2008

150

:

●

3000

$$.\%4$$
$$(\quad)$$

.2004

2010

%22

%27

$$\vdots$$

●

11 1

(IEC)

$$\left(\begin{array}{c} \text{ } \end{array} \right)$$

.2007

511

2006

%7.8 2007

%10.6

.(2009 2008 %8.3 %9) 2010

(2010 %70)

" "

500

2008

: •

: •

.2010

: •

.2010 – 2008

2008 2007

)

2008 /

2008

()

.(

)

:

"

:

"

•

.(

$$\vdots$$

●

$$\vdots$$

●

II

11

•

•

•

$$\vdots$$

•

•

●

"

.

.

"

.

.

.

.

4-1-5

.2010

%40.5

2008

%43.8

.

.

.

.3-1-5

(1-1-5)

.

453

:(1-1-5)

() ()	2010 ()	2009 ()	2008 ()	
257	109	86	62	
31	5	12	14	
48	5	23	20	
71	35	21	15	
46	16	16	14	
453	170	158	125	

(2-1-5)

:(2-1-5)

2008		/
22.5		
X		
X		
X		
X		
X		
X		
X		
X		
X		
X		
X		
X		
X		
X		
X		
X		
X		
X		
782		
4.5		
0.5		

0.6		
0.1		
5.7		
6.5		
5.2		
11.7		
3.3		
0.3		
0.2		
3.8		
2.7		
2.7		
6		
5.3		
4.4		
15.7		
17		
5.8		
7.7		
30.5		

1.9		
1.9		
20		
1		
3		
1		
0.5		
2		
2		
29		
5		
1.5		

0.5		
7		
0.5		
0.5		
0.5		
0.5		
0.2		
0.4		
0.4		
3		
22		
6		
28		

2	()	
45	()	
30	()	
6	()	
2	()	
5	()	
6	()	
2	()	
1	()	
33	()	
132			
1·053			

5-1-5

.'×'

.
 : 2010 – 2008
 .2010 2009 %5 2008 %10
 . %5
 . %10
 . %20
 . %10 ()
 . %10
 . %10
 . %20
 . ()
 .

-
-
-
-
-
-
-
-
-

: 2010 – 2008

%20

() :

()

()

:

2010 – 2008

:

-
-
-
-
-
-

-
-
-
-

)
 .($\%20$ -
 .2010
 .
 .
 .2008
 ()
 :
 () :
 2010 - 2008
 ()

-
-
-
-
-
-
-
-
-
-

:

2010 – 2008

—

•

•

•

•

•

•

•

•

•

•

"

"

%50

"

—

•
•

2-5

1-2-5

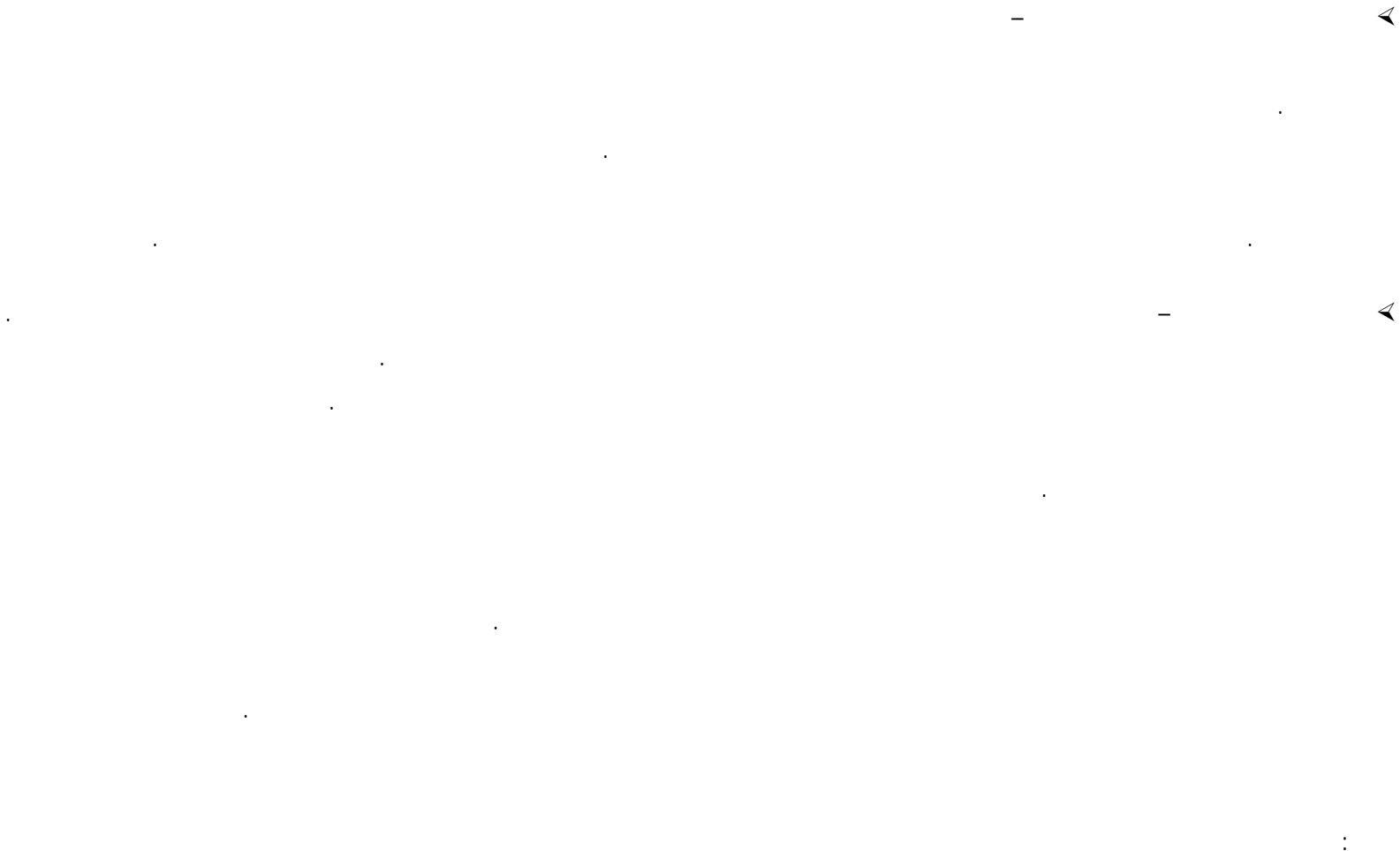
:

•
•
•
•

()

()

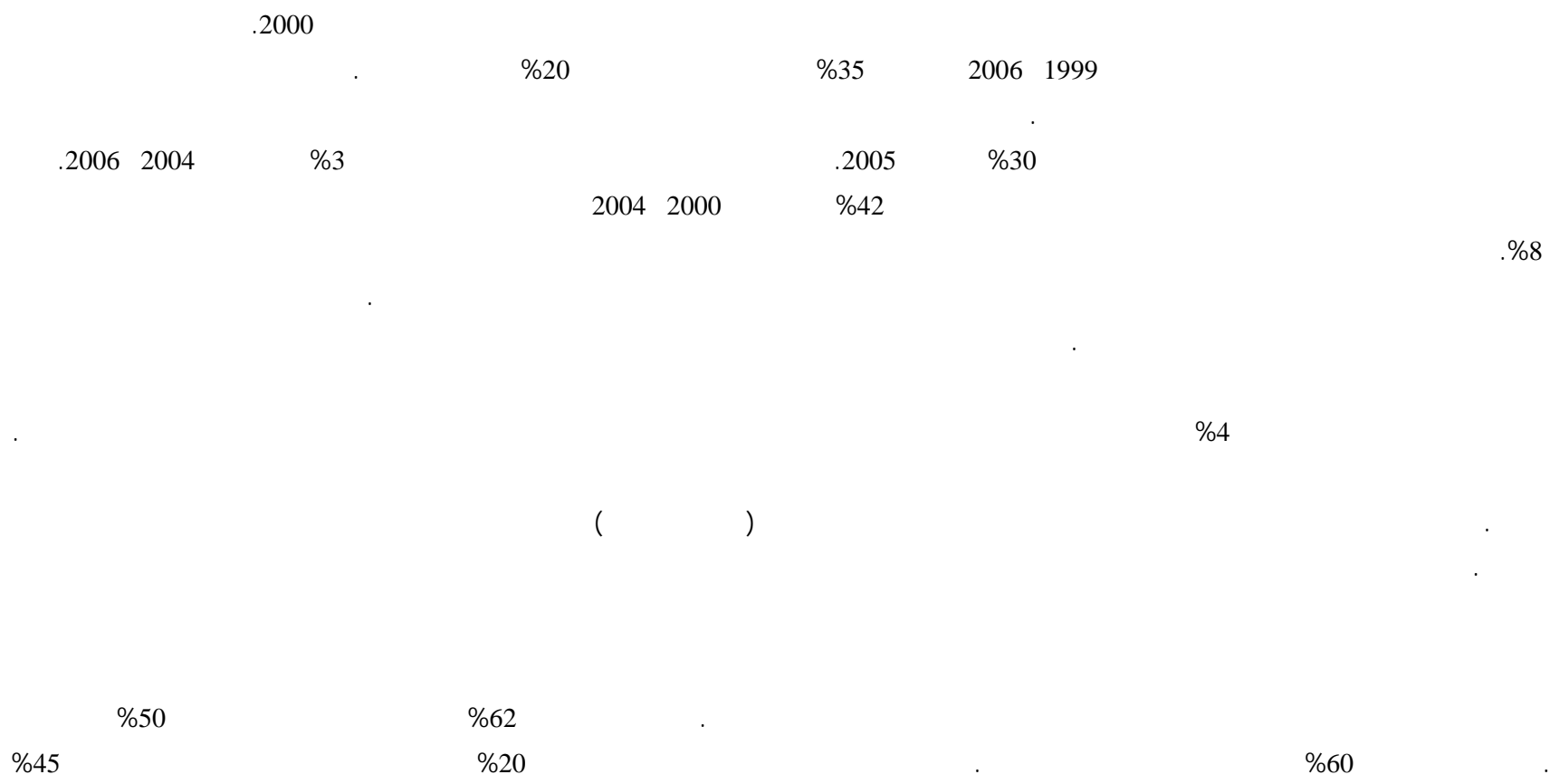
1.6





2-2-5

.2006



)

.(

3.5%

6.5%

2005

2004

30%

80%

2000

2006/2005

2006

2005

2000

24.9

2000

1999

28.6

24.7

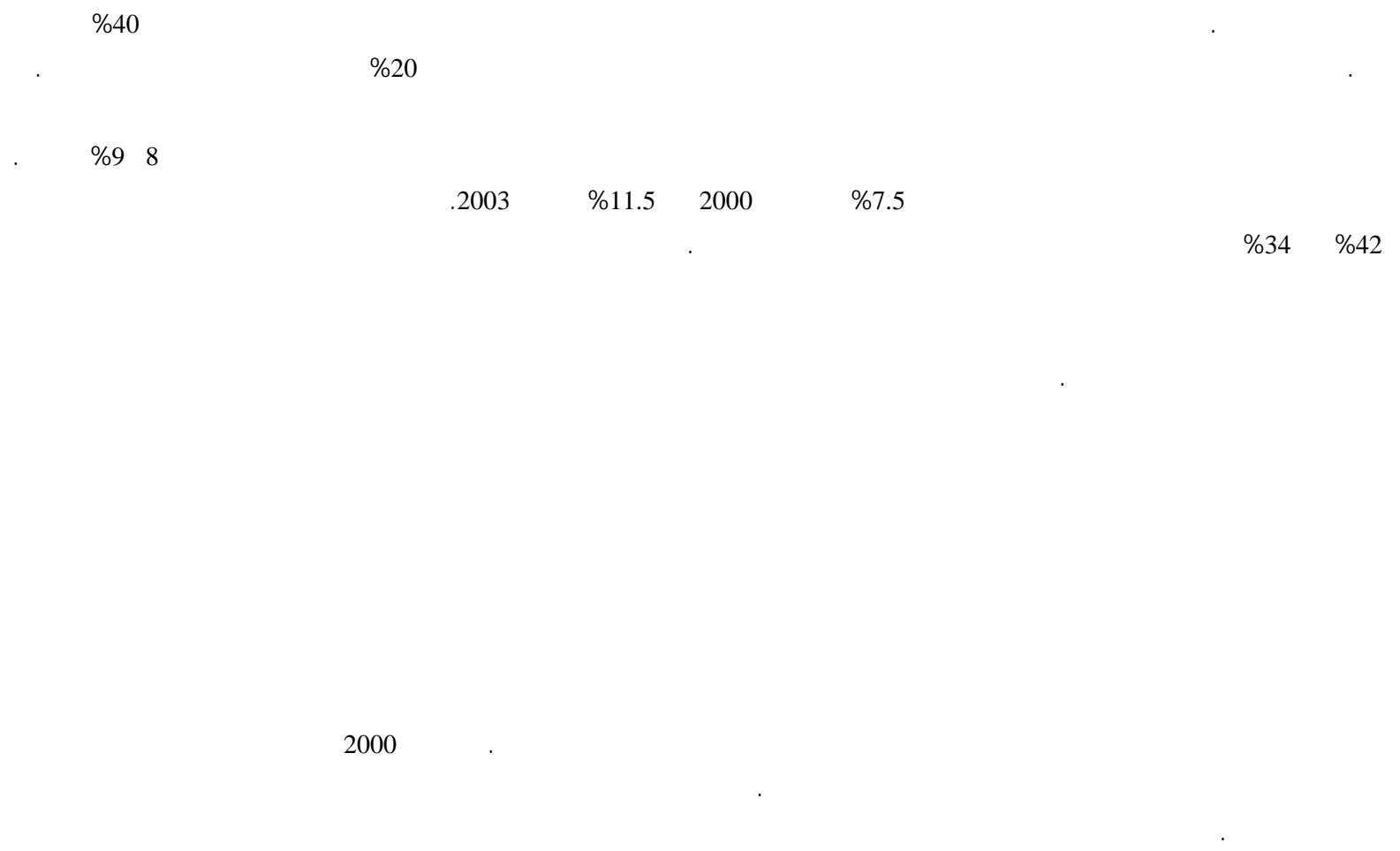
2005/2004

1,661

2000/1999

1,289

25



2000

.%60 40

(*giardia*)

2002

%9

%42

2000

%8

.2002

%2.5

2000

2004

%1.4

%75

2006

3-2-5

%4

—



()

—



3-2-5



2008

%30

%20

600

(4-2-4)

4-2-5

.2010

2008

%45

%31

3-2-5

(1-2-5)

583

:(1-2-5)

() ()	2010 ()	2009 ()	2008 ()	
12	2	5	5	
156	76	46	34	
146	51	50	45	
5	1	2	2	
29	15	8	6	
116	52	35	29	
23	5	10	8	
22	8	7	8	
13	3	5	5	
57	18	20	19	
3	1	1	1	
583	232	189	162	

(2-2-5)

:(2-2-5)

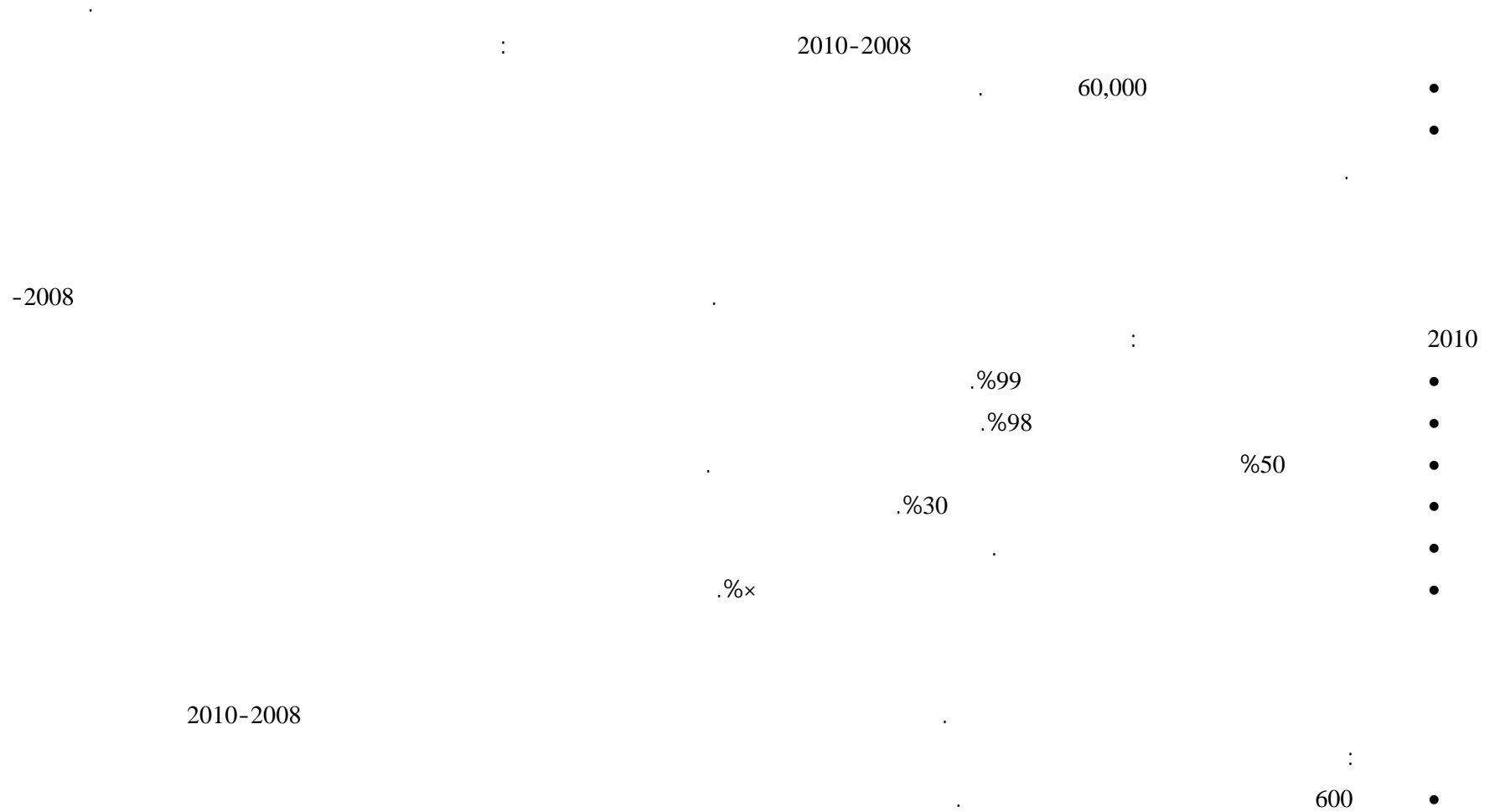
2008		/
438		
9		
5		
451		
246		
0.3		
1		
0.2		
0.4		
248		
93		
71		
1		
165		
3		
7		
10		
33		

33		
3		
1		
1		
5		
5		
61		
3		
1		
3		
73		
2		
0.5		
0.5		
3		
0.3		
0.3		
0.5		
0.1		
1.2		
8		

2		
10		
21		
2		
2		
25		
1,023		

5-2-5

"x"



•
•
•

:

2010-2008

•
•
•

:

2010-2008

.%×

.%×

•
•
•

-2008

:

2010

%97

-
-
-
-
-

30 -

:

2010-2008

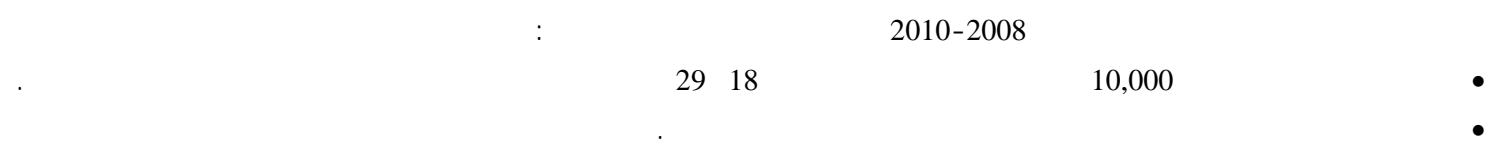
%.20

-
-
-
-

%.60

%.70

-



2010-2008

•

3-5

1-3-5

:

•

•

•



)
(

)

(

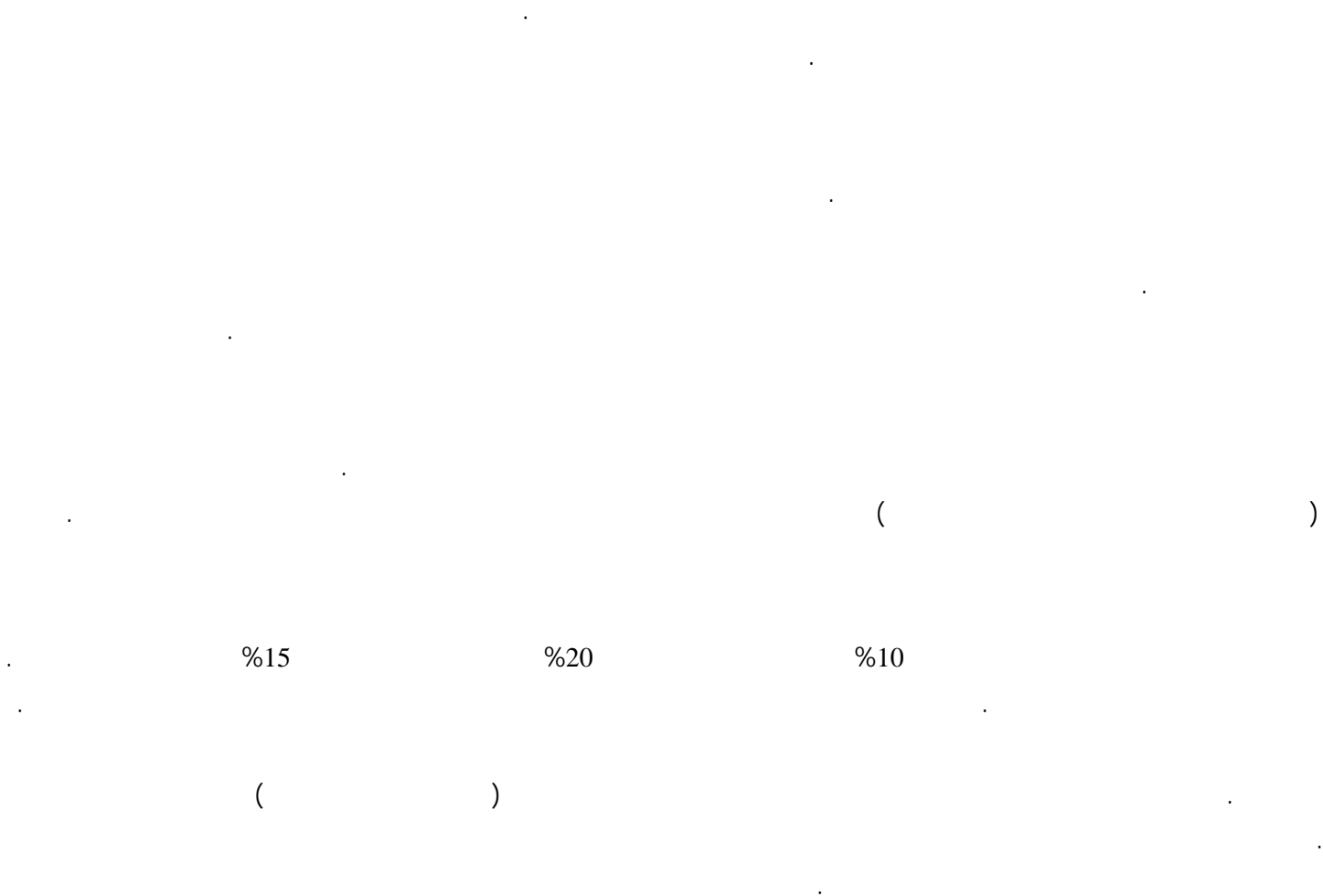
1-5

2-3-5

2005 2003

2005

.()

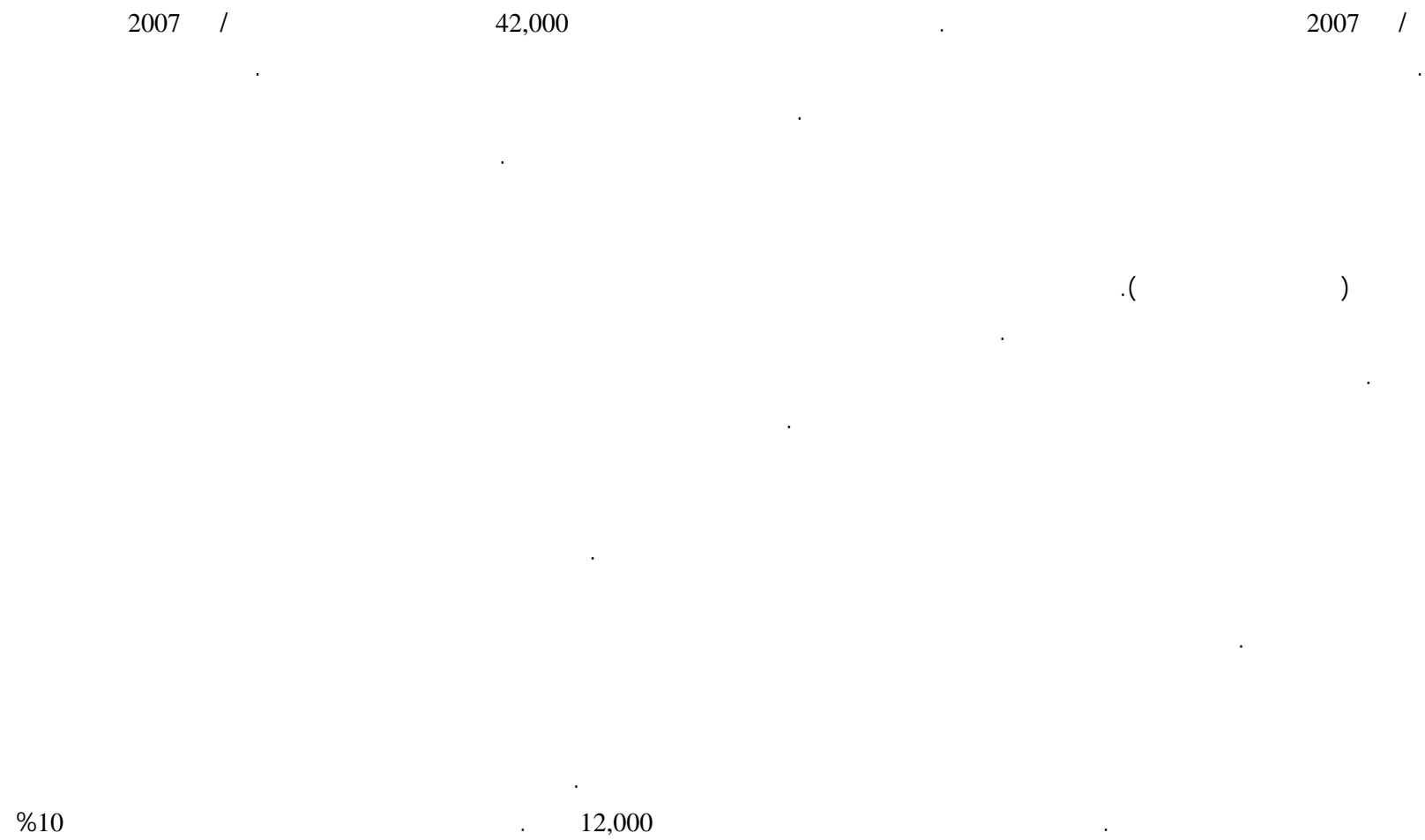


24,000

 $\%2$

(

)



$$(\quad)$$

1999

%22

%11

()

()

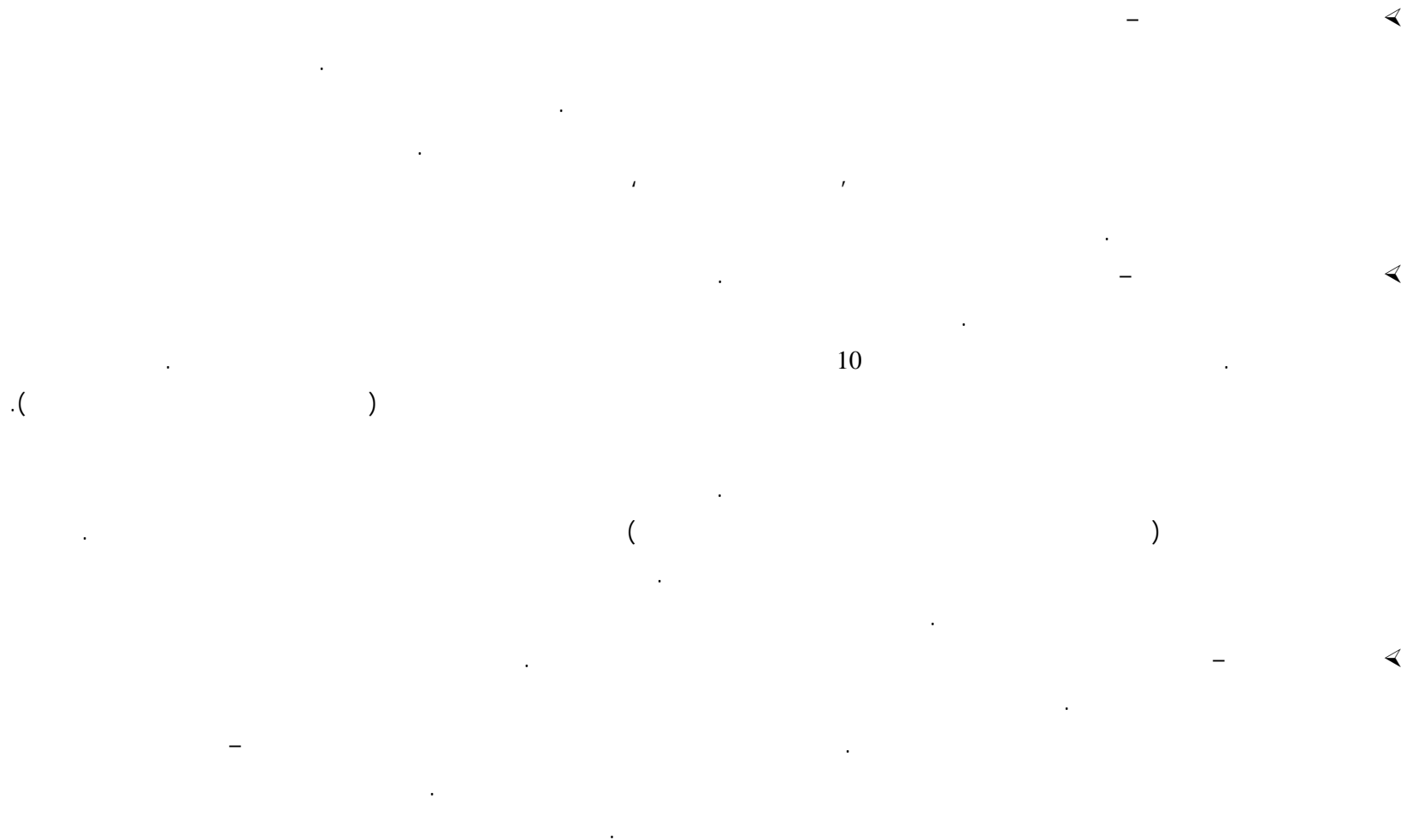
— () " "

3-3-5



(%25)

.()



10

3-3-5

)

(

() :

() (

)

()

2008

)

2007

—

:

(

•





.

)

-

.(

•

.

.

.

.

.

.

.

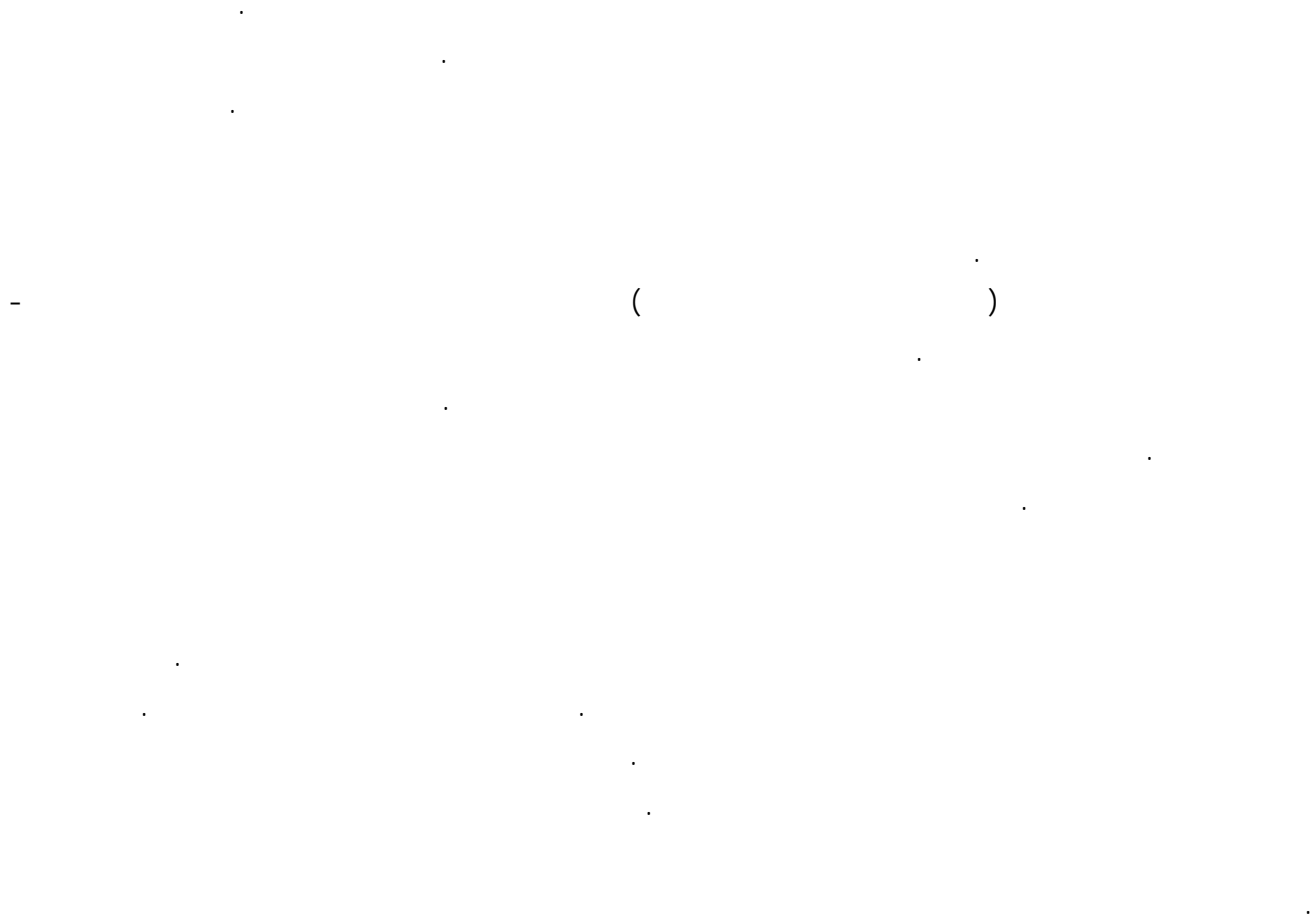
.

.

.

)

.(



)

.(

•

•

•

4-3-5

.2010	%7.1	2009	%6.2
-------	------	------	------

2008

%5.9

%21

()

3-3-5

(1-3-5)

395

:(1-3-5)

	2010	2009	2008	
()	()	()	()	
30	10	10	10	
36	12	12	12	

52	16	18	18	
66	24	24	18	
78	36	23	19	
43	14	14	15	
90	50	25	15	
395	162	126	107	

(2-3-5)

:(2-3-5)

2008		/
4		
8		
1		
1.3		
1.5		
11		

0.5		
8		
21		
3		
2		
5		
0.5		
6		
0.5		
7		
2		
0.5		
1.5		
4		
3		
0.5		
0.5		
4		
1.5		

1		
1		
3.5		
57		

5-3-5

.'x'



.%x

.%x

.%x

-
-
-
-

:

2010 – 2008

.%15

.%10

.%25

-
-
-
-
-
-

:

2010 – 2008

.%10

.%15

-
-
-

•
•

2010 – 2008

:

.%100
.%100

•
•
•
•
•

2010 – 2008

:

.(%4)
2,000 -

•
•
•

4-5

1-3-5

•
•
•

)

()

(

-

-

-

◀

◀

◀

()

(3-5 2-5)

2-4-5

.1948

)

.1967 (
 .
 (620 2,870)
 1993 .
 2,400 800
 1,000 .
 .
 .
 10 2000 15.3 1996 12.8 10,000
 .
 () ()
 .
 ()

. %15 %10 .

.(%99)

. %10 .

280 10 (100) 60
%90

.()

.

.

140

.

.

.1967

.(%40)

.

.

%.54

.

.

.

.

(%40)

%34

2006

.

.

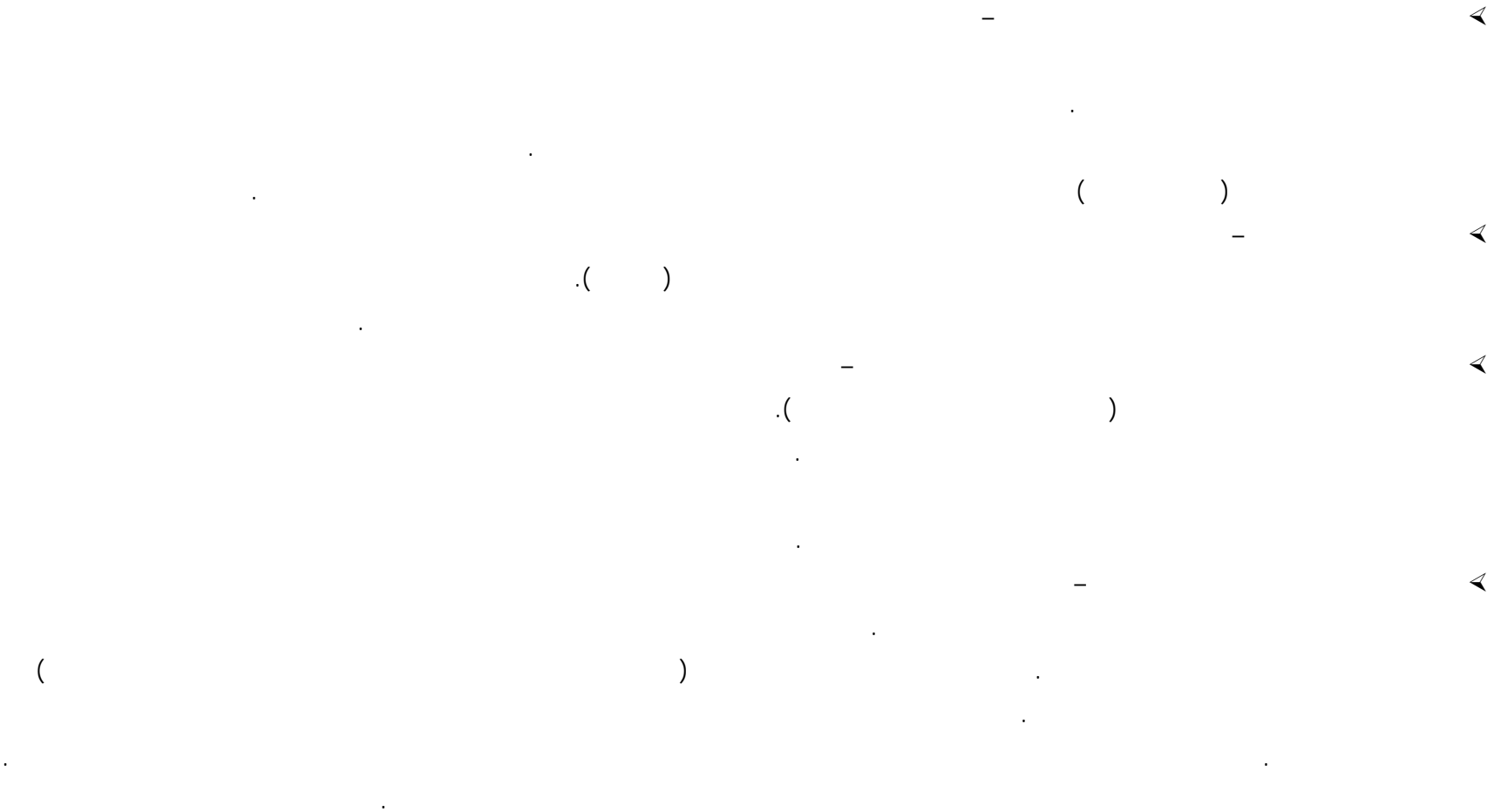
)

(

()

-







—

3-4-5



—

.

—



.

—



.

—



.

.

()

.

—

.

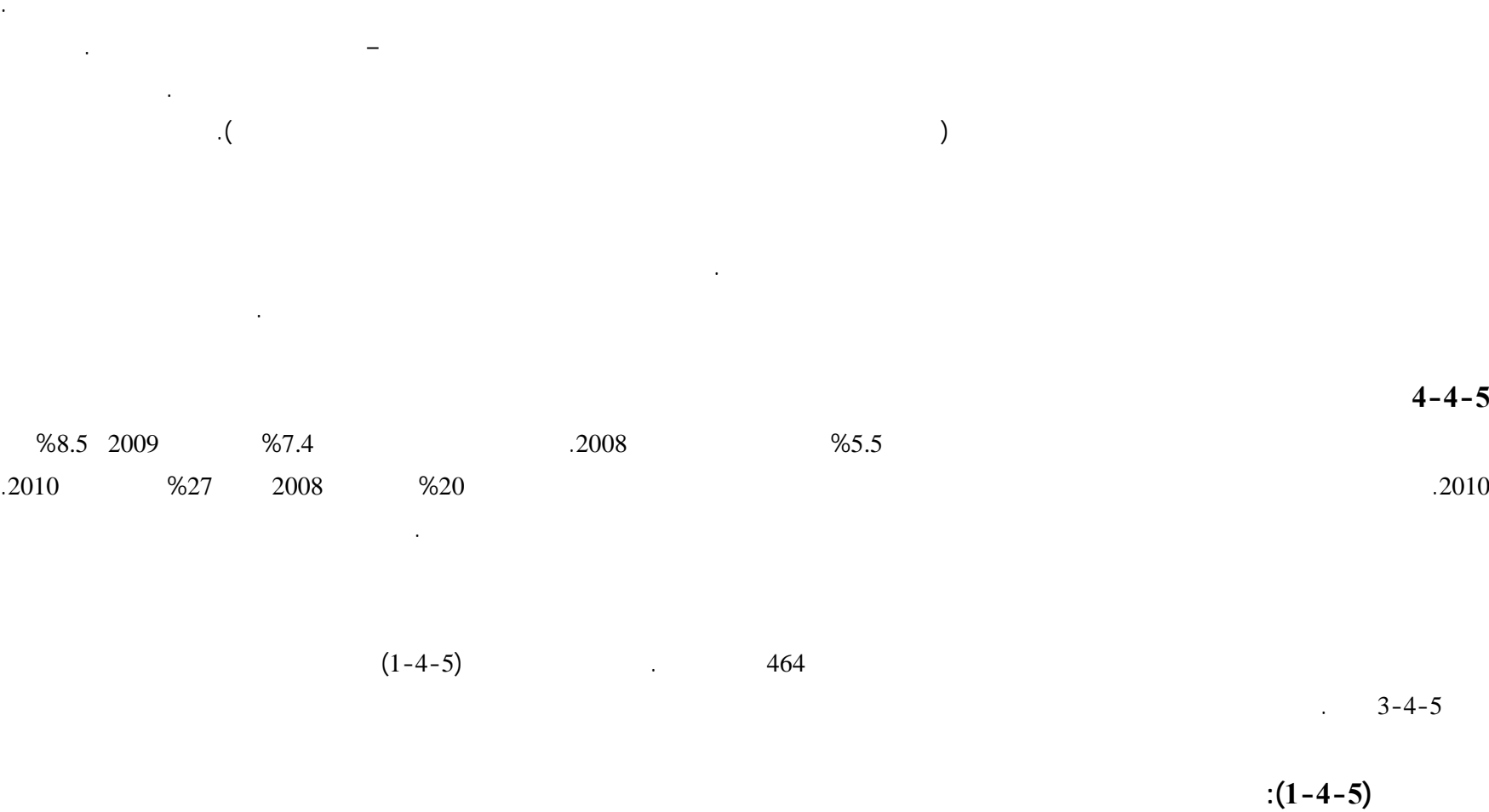
.

.

()

.()

()



()	()	()	()	
132	60	40	32	
25	12	8	5	
35	18	13	4	
68	26	24	18	
138	54	54	30	
37	18	14	5	
29	17	8	4	
464	205	161	98	

(2-4-5)

:**(2-4-5)**

2008		/
8		
3		
3		
14		
10		

0.6		
3.4		
-		
14		
1.5		
0.9		
0.2		
-		
-		
2.6		
3.5		
0.7		
0.6		
4.8		
0.5		
0.7		
0.7		

1		
2.9		
38		

5-4-5

"x"

:

2010 – 2008

.2008

•

.2010

200

•

.2010

%10

•

.2009 .2009 .2010

2010 – 2008 :

.2010 .2010 300,000
.2010 %10

2010 – 2008 :

.2010 %95
.2010 %10
.2010

:
2010 – 2008
%x

.2010 %x

.2010

●

●

– 2008

•

•

2010

●

●

.2010

.()

500

•

2010 – 2008

●

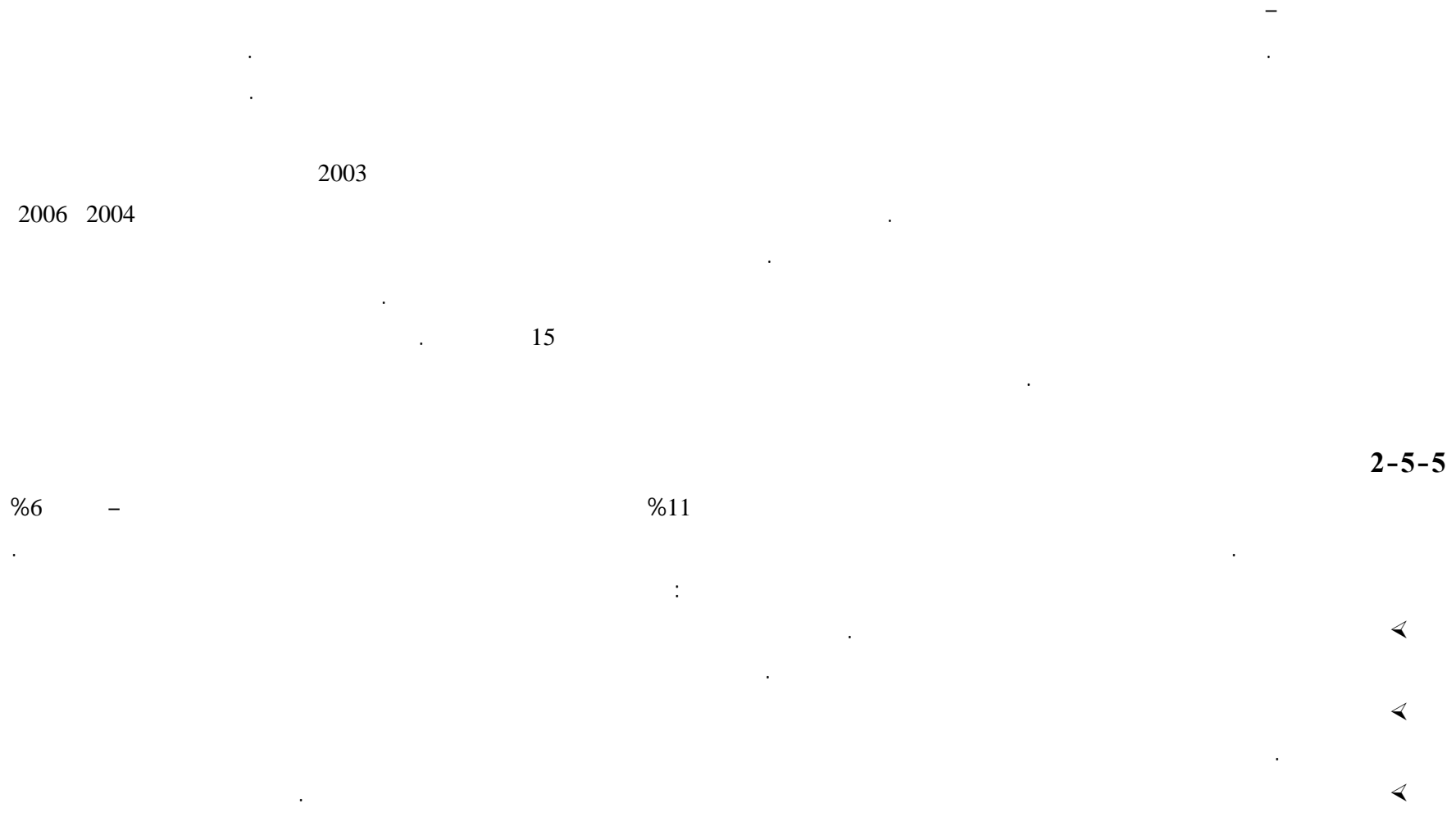
5-5

1-5-5

2010-2008

•

$$\cdot \left(\begin{array}{c} \vdots \\ \vdots \\ \vdots \end{array} \right)$$





1967

$$\vdots$$

$$\cdot (\quad)$$

$$\cdot (\quad)$$

3-5-5

1967

12

– 70,000

6,000

%85

4,000

)

.%25

40 (20,000 1967
 .2006 250,000 1967
 250,000 420,409
 1997 8,000
 90,000 .2006
 " "

100

%50

)

%60

(

22

530

)

20

(

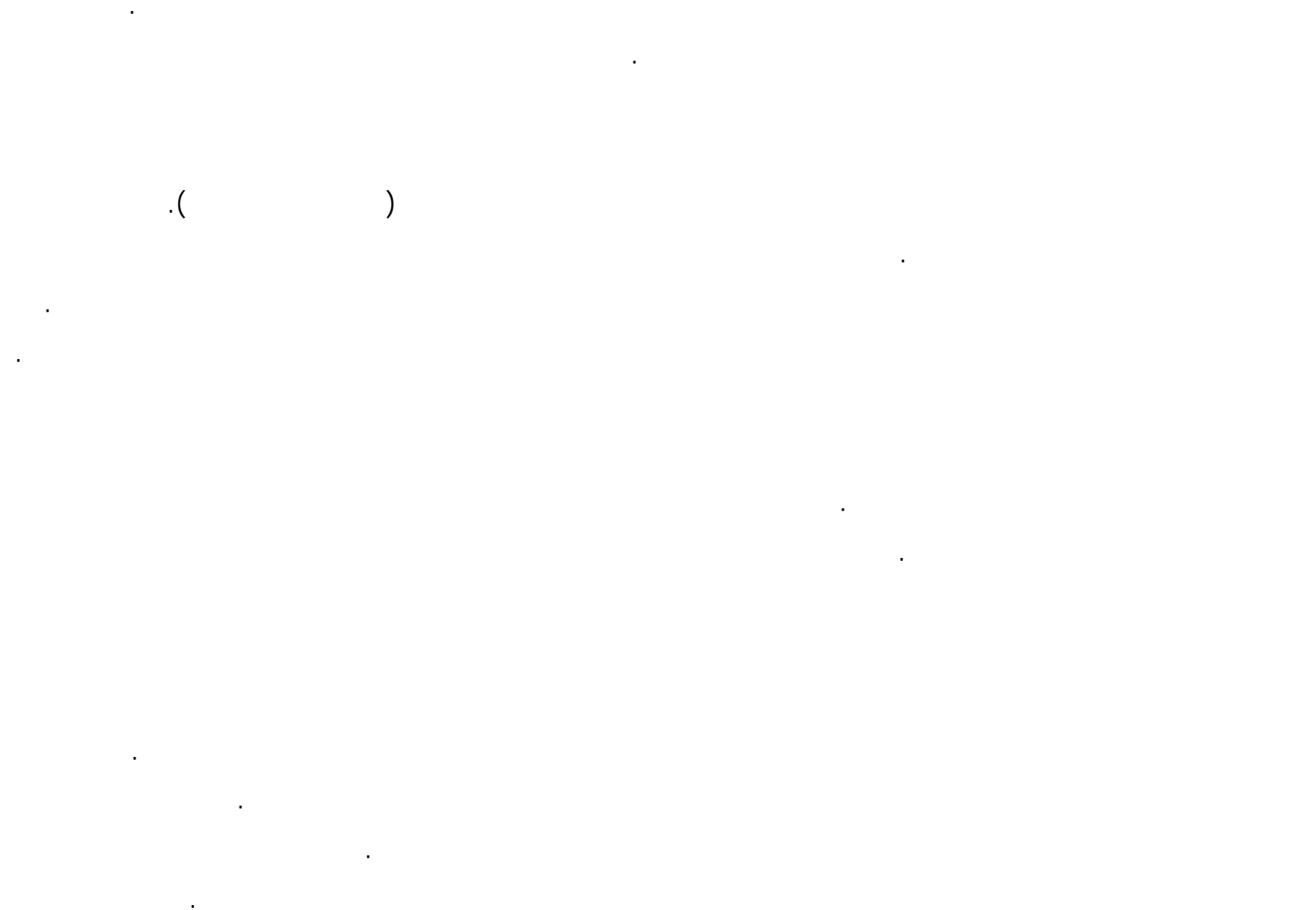
6

-

15

)

(



2000

()

4-5-5

.()

:(1-5-5)

2010) (2009) (2008) (
3	3	1		-	
				-	
5	5	3		-	
				()	
7	6	5		-)	

2010) (2009) (2008) (
				.() - .(
2	2	2		- . - . - . - .	
7	6	5		- - -	
4	4	3		-	

2010) (2009) (2008) (
				—	
6	5	5		—	
				—	
				—	
				—	
				.2009	
6	5	4		-	
				-	
				-	
				-	
				-	
6	5	4		—	

2010) (2009) (2008) (
				— —) (
46	41	32			
769	634	492			
6.0%	6.5%	6.5%			

5-5-5

:

-
-
-
-
-
-
-
-

-6

1-6

2008

.2009

2009

(8-6)

2008 / 31 2008
(8-6) . 2008

2-6

: 2008

2008

-
-
-
-

.()

—

.) " "

2008

.(

-
-

3-6

.2005

—

.2006

" "

" "

2005 2006

.2006

1.7 2006

()

(%25)

1.3

2007

2007 %7

()

(1-4)

%15.5 2007 %26.7

%41.2 %50.3

.(2005

%23.6

.2010

%25.7 2007

()					:(1-6)
2010	2009	2008	2007	2006	
					(%)
25.7	25.4	24.4	23.6	25.4	
41.2	43.5	46.7	50.3	50.2	
21.6	23.0	24.3	25.4	26.3	
14.4	14.7	15.8	14.4	16.5	()
5.2	5.8	6.6	10.6	7.4	
-15.5	-18.2	-22.3	-26.7	-24.9	-
18.3	20.7	26.8	20.0	16.3	
-10.7	-9.6	-7.1	-4.9	-5.6	
10.8	9.7	8.1	6.1	6.2	

2008

.

.

.

.()

.2007 2006

.2010 %5.2 2007 %10.6

.

.

()

.2006

1.3 2007

.2007 400

2010-2008

.2010

%10.8

2007

%6.1

630

)

(

2010-2008

1.4

)

.(

(1-6)

2007

2010

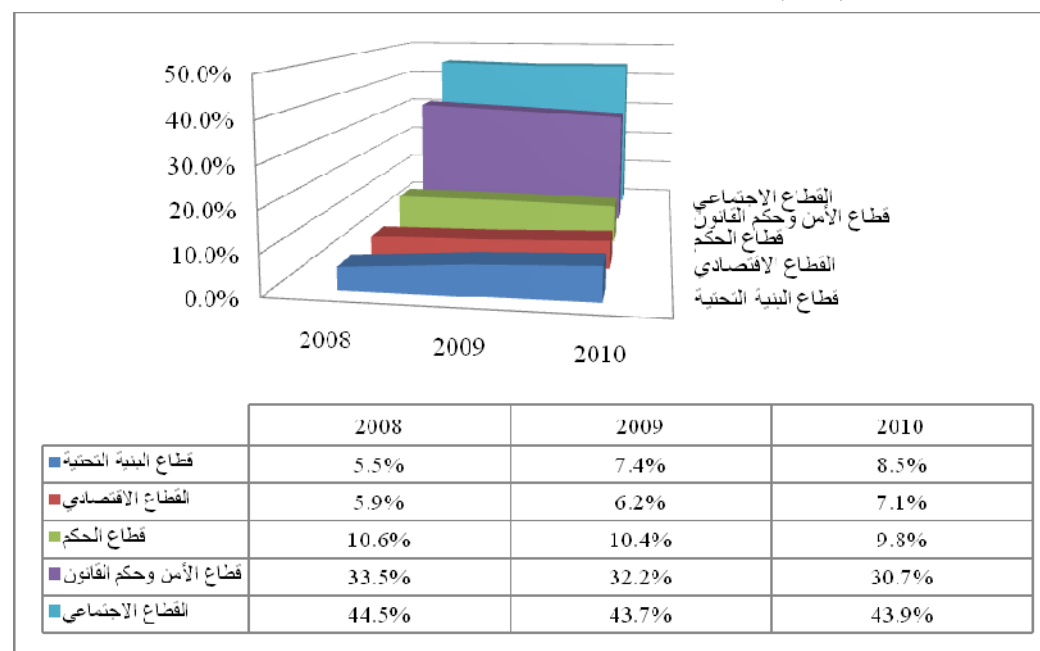
%30

2008

-

%44

(1-6):



4-6

.()

(2-6)

:(2-6)

2008		2007		
)
				(
%		%		
10.8%	854	10.1%	765	-
37.5%	2,971	43.3%	3,266	-
47.1%	3,729	41.8%	3,152	
2.3%	183	2.3%	176	
2.3%	183	2.4%	185	
100%	7,920	100%	7,544	

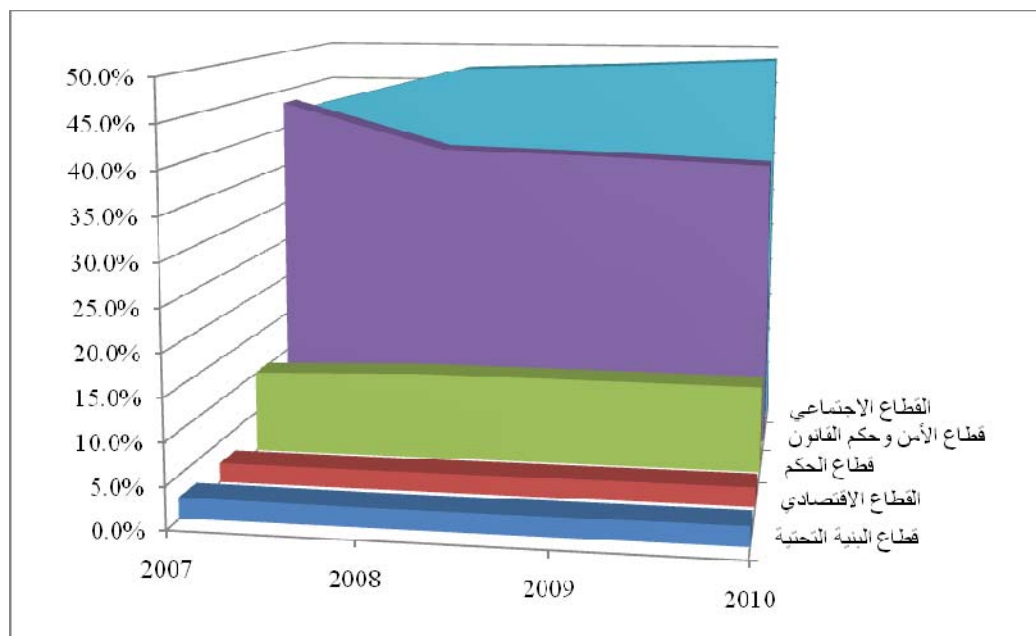
2007

2008

%12

(2-6)

(2-6):



(3-6)

:(3-6)

		2008	2007	
%		%		
52.1%	5,333	53.2%	5,736	
11.3%	1,154	7.0%	755	
19.9%	2,037	16.2%	1,750	
1.0%	106	0.6%	66	/
1.7%	175	3.5%	375	
14.1%	1,440	19.5%	2,100	
100%	10,139	100%	10,716	

.2008

%5.4

2007

("

"

)

5-6

:

•

-
-
-
-

2010-2008

(())

2009

769 2009

634

2008

492

.2010

(4-6)

(2)

:(4-6)

()	2010 ()	2009 ()	2008 ()	
257	109	86	62	
31	5	12	14	
48	5	23	20	
71	35	21	15	
46	16	16	14	
453	170	158	125	
12	2	5	5	
156	76	46	34	
146	51	50	45	
5	1	2	2	
29	15	8	6	
116	52	35	29	
23	5	10	8	
23	8	7	8	
13	3	5	5	
57	18	20	19	
3	1	1	1	
583	232	189	162	
30	10	10	10	
36	12	12	12	
52	16	18	18	
66	24	24	18	
78	36	23	19	
43	14	14	15	

90	50	25	15	
395	162	126	107	
132	60	40	32	
25	12	8	5	
35	18	13	4	
68	26	24	18	
138	54	54	30	
37	18	14	5	
29	17	8	4	
464	205	161	98	
1,895	769	634	492	

120 () :

43 18 : 18 :

41 :

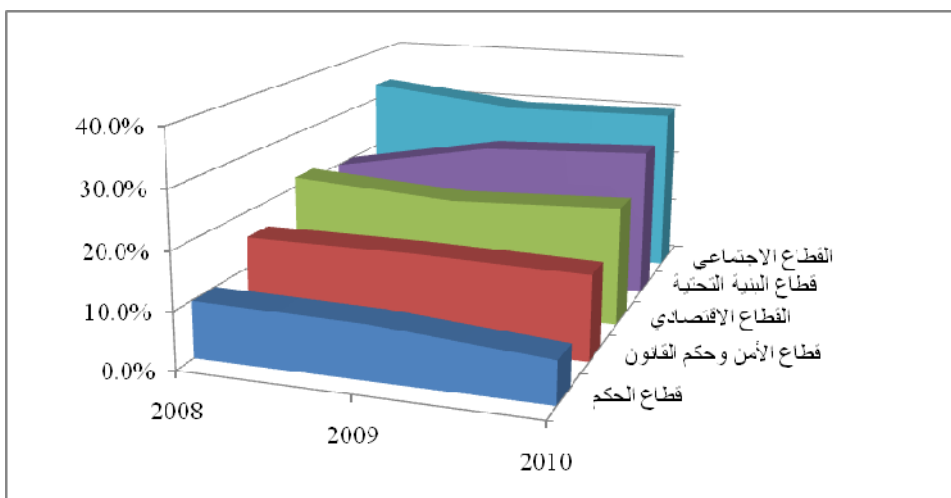
(.

2008 (3-6)

()

:(3-6)

6-6



2008

2008

2010-2008

2008

.2007

7-6

2008

(5-6)

:(5-6)

-		
- - -		
2008 - -	/	

2008 - / 2008		
-		
: - -		
- -		
-		
2008 -		

-		
%50		

-7

2010-2008

)

(

1-7

1.64

3.64

5.6

.2010

1.92 2009

1.88 2008

1.79

.

.

.

2007 /

.

.

2-7

() :

()

()

%6

2008

%3.5

.2009

2010

2010-2008

%2-

%5

3-7

.()

%30

%70

4-7

1994 /

.2010-2008

5-7

(1-4)

6-7

– 2007

–

-8

2008

.2010

1-8

:

.(

)

-
-
-
-
-

2-8

(
.)

.(
)

:

•
•
•
•

.2010-2008

:

:

:

:

:

•

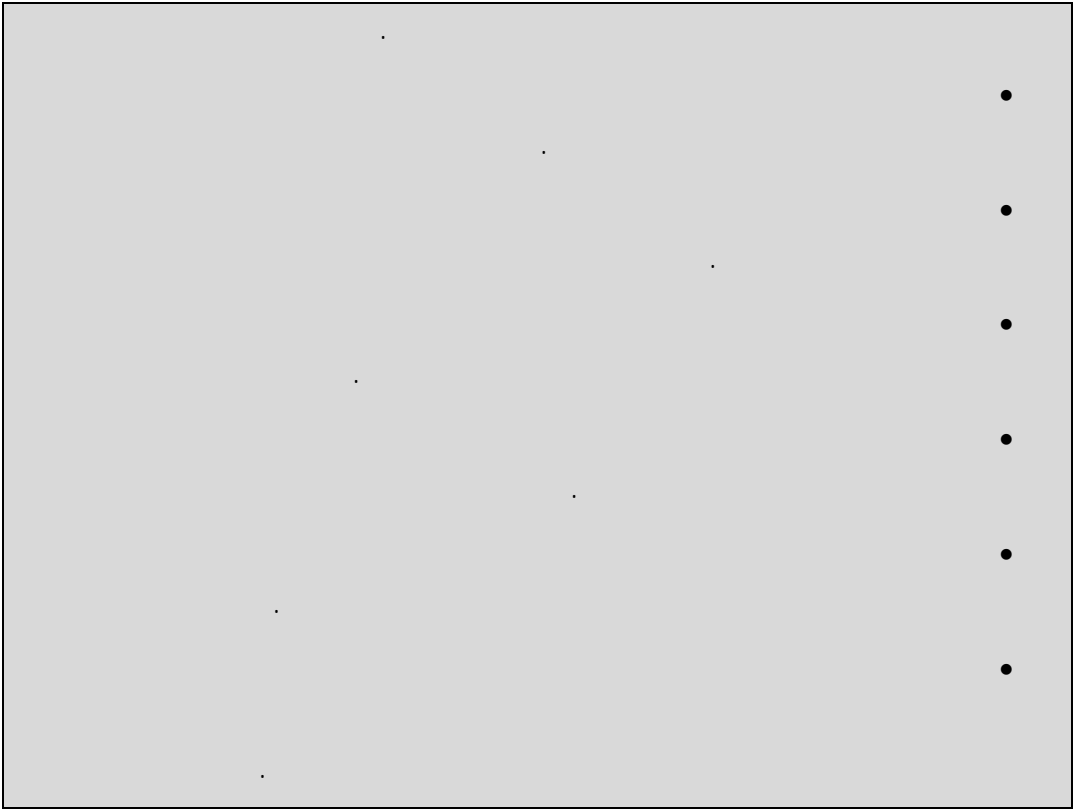
•

•

•

:1-8





4-8

⋮
⋮

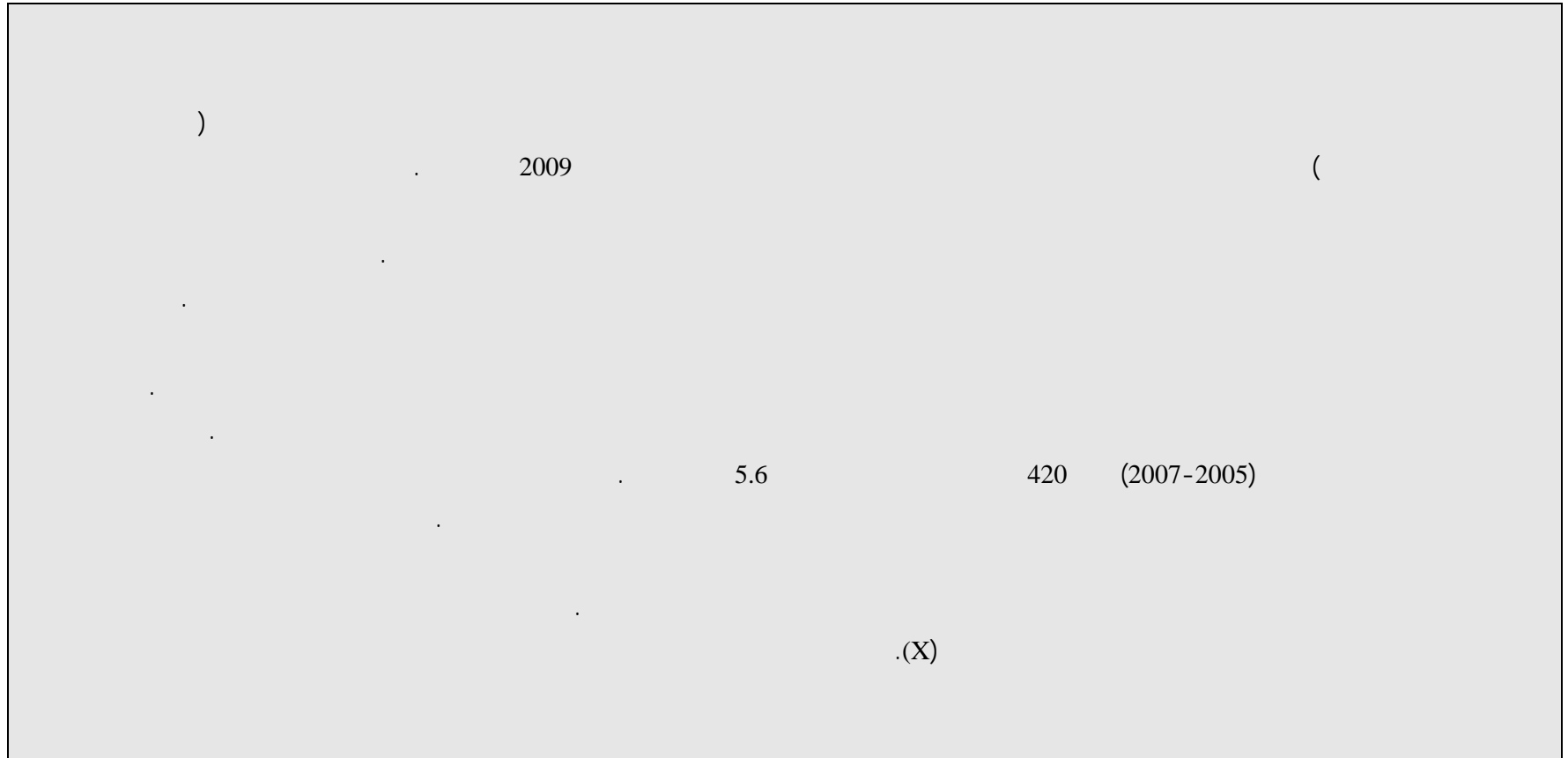
•

)

(

.()	•
		•
		:
	2008	5-8
2008	.2008	:
		•
		•
		•
		•
	.(•
)	•
		•
)	•
.2009		(

:2



:2

:

			:				:
			:				:
()							:
2010	2009	2008	/				
11	9	6	.1	2008 %10	-		
5	3	2	.2	2010 / 2009 %5	-		
7	5	3	.3	%5	-		
		12		%10	-		
5	5	3		%20			
6	5	3	(20)	%10	-)	

			(9)	(10)	%10	-	(-	
25	20	15	400		%10	-		-	
						-		-	
10	9	6			%20				
40	30	24			8				
109	86	62							

:2

:

			:				
			:				
()							
2010	2009	2008	/				
-	-	1	.1				
-	-	1	.2				
-	-	2					
-	-	1		-	-	-	
				-	-	-	
				-	-	-	

				-	-	
-	2	2	.1	-		
-	1	2	.2	-		
-	1	1	.1	-	-	
5	6	2	.2	%20 %100	- - -	
-	1	1	.1			
-	1	1	.2			
5	12	14				

:2

:

			:	-				:
			:	:				
()			:					
2010	2009	2008	/					
-	2	2						
-	1	2			2008 - - - -			
1	1	1			2008 - - -		- -	

-	2	2	()	2008	-		
				/	-		
				2008	-		
1	6	7					

:2

:

				:	-			:
				:	:			
()			:					
2010	2009	2008	/					
-	-	1		2008	-			
					-			
				2008	-			
					-			
-	1	1			-	-		
					-			
					-			
-	2	2		(2008)	-	-		

				%20	-	-	
				2008	100	-	
1	1	1		%100	-	-	
					-	-	
1	10	2					
2	14	7					

:2

:

			:	-			:
			:				:
()				:			
2010	2009	2008	/				
1	1	1		%50	-	-	
				2008	-	-	
-	-	-		:	-	-	
)	6	-	-	
			(-	-	
-	-	-			-	-	
					-	-	

-	-	1		2008	-	-	
1	2	4		2008			()
2	3	6					

:2

:

			:	-				:
			:	:				
()			:					
2010	2009	2008	/					
-	-	-)) (:	- - - -		

:2

:

			:	-			:
			:	:			
()			:				
2010	2009	2008	/				
6	4	3		%50			
17	7	3)	-			
			((-		
			:)	-		
			(-		
5	3	2		%50			

7	4	1		78) (- - -	- - -
35	18	9				

:2

:

				:	-			:
				:	:			
()			:					
2010	2009	2008	/					
-	-	1	.1	-	-			
-	1	1	.2	-	-			
-	1	1	.3	-	-			
-	-	1	.4)	-	-		
			(-	-			
				-	-			
				-	-			

				-		
-	1	2	.1			
-	3	6				

:2

:

			:				
			:				
()				:			
2010	2009	2008	/				
-	-	2	.1	-	-		
10	8	4	.2				
-	2	4	.3	-	-		
6	6	4	.4				
16	16	14					

:2

:

			:				
			:				
()							
2010	2009	2008	/				
2	5	5	.1	60			
			()				
			(
2	5	5					

:2

:

			:				
			:				
()				:			
2010	2009	2008	/				
59	29	18	.1	%99	-	-	
				%98	-		
10	9	9	.2	%50	-	-	
				%30	-	-	
					-		
5	4	3	.1	%X			

2	3	4				
76	64	34				

:2

:

			:					:	
			:						:
()									:
2010	2009	2008	/						
14	13	8	.1	600					
			600 -						
)						
			(...						
3	3	4	.2						
4	4	5	.3						
3	3	3	.4						

4	5	6	.5	%10		
			ADSL			
3	4	5	.6			
4	3	4	.7			
3	3	3	.8	%5		
5	5	5	.9			
				%100		
2	2	2	.10			
6	5	-	.1			
51	50	45				

:2

:

			:				
			:				
()				:			
2010	2009	2008	/				
1	2	2	.1	-	-	-	
				-	-	-	
				-	-	-	
				-	-	-	
				-	-	-	
				-	-	-	
				-	-	-	
1	2	2					

:2

:

			:				:
			:				:
()							:
2010	2009	2008	/				
13	6	4	.1	%X	-		
				%X	-		
2	2	2	.1				
15	8	6					

:2

:

			:				
			:				
()				:			
2010	2009	2008	/				
-	1	2	.1	%97 -	-	-	
-	-	4	.2		-	:	
-	2	2	.3			-	
						-	
-	-	1	.4			-	
-	1	2	.5	%60 -	-	-	
					-	-	
-	-	1	.6				

-	3	1	.7			
5	2	1	.8			
-	2	2	.9			
-	9	4	.10			
-	3	1	.11			
26	2	1	.12			
-	1	1	.13			
6	4	3	.1	30 -	-	
15	5	3	.2	%100 -	-	
				7 -	-	
52	35	29				

:2

:

			:				
			:				
()							
2010	2009	2008	/				
-	2	2	.1	%20			
-	1	1	.2				
1	2	1	.3		-	:	
					-	-	
1	1	1	.4	%60			
-	2	2	.5		-	-	
3	2	1	.6		-	-	
				%70			
5	10	8					

:2

:

			:				:
			:				:
()							:
2010	2009	2008	/				
7	4	3	.1	1000			
-	-	2	.2				
				1000			
				1000			
-	1	1	.1	-	-		
1	2	2	.2				

)		
				(-	
8	7	8				

:2

:

			:					:	
			:						:
()									:
2010	2009	2008	/						
3	4	4			10000 29 – 18		- - -		
-	1	1							
3	5	5							

:2

:

			:				
			:				
()				:			
2010	2009	2008		/			
18	20	19		.1	%X		
18	20	19					

:2

:

			:				
			:				
()				:			
2010	2009	2008		/			
-	-	0.5		.1			
0.5	0.5	0.5		.2			
0.5	0.5	-		.3			
1	1	1					

:2

/ / :

			:					:
			:					:
()								:
2010	2009	2008	/					
1	1	2	.1	%40	-	-		
2	2	3	.2		-	-		
7	7	5	.1	%60				
10	10	10						

:2

/ / :

			:				:
			:				:
()							
2010	2009	2008	/				
8	8	8	.1	-	-		
2	2	2	.2	%15			
2	2	2	() .1	-	-		
			())	(
				%30			
12	12	12					

:2

/ / :

			:				
			:				
()				:			
2010	2009	2008	/				
9	8	7	- .1	-	-	-	
3	3	3	.2				
4	6	6	.3				
)	(%X		
					-	-	
					%X		
					-	-	
					%X		

-	1	2				
16	18	18				

:2

:

			:				
			:				
()							
2010	2009	2008	/				
9	9	6	()	.1	%15	-	-
4	4	5	-	.2	%10	-	-
					%25	-	-
3	3	2		.1			
4	4	3		.2			
4	4	2					

						()
24	24	18				

:2

:

			:					:
			:					:
()								:
2010	2009	2008	/					
12	6	5	.1	%15	-	-		
20	12	8	.2	%15	-	-	()	
4	5	6	.3					
36	23	19						

:2

:

			:				
			:				
()				:			
2010	2009	2008	/				
6	7	5	.1	-	-		
3	3	4	.2	%100			
1	1	2	.3	-	()		
1	1	2	.4	%100			
2	2	2	.5				
14	14	15					

:2

:

			:				:
			:				:
()							:
2010	2009	2008	/				
40	20	10			-	-) (%4 20 -
10	5	5			X) (
50	25	15					

:2

:

			:					:
			:					:
()			:					
2010	2009	2008	/					
23	12	12	.1	200	-	-		
)	-			
				325	(
35	23	17	.2			-		
			()					
2	5	3	.3					
			()					
			-)					
			(
60	40	32						

:2

:

			:				:
			:				:
()				:			
2010	2009	2008	/				
6	5	3	.1	-			
				%10			
6	3	2	.2	-			
)				
			(%10			
12	8	5					

:2

:

()						
2010	2009	2008	/			
-	1	-	.1	-		
-	4	2	.2			
3	1	2	.3	-		
15	7	-	.4			
18	13	4				

:2

:

			:				
			:				
()				:			
2010	2009	2008	/				
8	10	5	.1	-	-		
3	4	2	.2				
7	3	2	.3	300	-	-	
6	5	5	.4				
2	2	4	.1	-	-	-	
				%X	-		
26	24	18					

:2

/ :

			:				:
			:				:
()							:
2010	2009	2008	/				
10	10	6	.1	-	-	-	
			-	%95			
6	5	3	.2	%10	-	-	
8	9	4	.3		-	-	
1	1	-	.4	.			
11	17	11	.1	-	-	-	
				%X			
17	11	5	.2	-	-	-	
				%X			
1	1	1	.1	-			

				-		
54	54	30				

:2

:

:			:			
:			:			
()			:			
2010	2009	2008	/			
1	2	3	.1	500		
17	11	1	.2			
-	1	1	.3			
18	14	5				

:2

:

			:				
			:				
()				:			
2010	2009	2008	/				
17	8	4	- .1	(X)			
17	8	4					

3

()

.

.

:()

.

:

•

•

•

.

(4)

119

35 :

()

.()

.()

(- - = ')

()

.()

: (1/)

:(1/)

()		
-		
-		
-		
-		
-		
-		

-

)

(

-

.2010 2008

2007

-

)

.(2006

27

(3/)

(2/)

1993 – 1972

1994

:(2/)

()		
	/	
	/ / /	

(3/)

:(3/)

-	
- .	
. ()	
. -	
.	

:(5)

()

:(1/)

2010			2009			2008			2007			2006	2005	2004	2003	2002	
														392	356	385	
														1.32	1.28	1.23	
387	358	275	318	294	245	357	338	302	297	297	297	344	285	296	278	314	
0.22	0.22	0.12	-0.11	-0.13	-0.19	0.20	0.14	0.02	-0.14	-0.14	-0.14	0.21	-0.03	0.06	-0.11	-0.17	
														743	656	610	
														1.32	1.28	1.23	
249	228	177	231	215	182	218	208	190	215	215	215	531	605	561	513	497	
0.08	0.06	-0.03	0.06	0.03	-0.04	0.01	-0.03	-0.12	-0.60	-0.60	-0.60	-0.12	0.08	0.09	0.03	0.04	
														382	313	243	
														1.32	1.28	1.23	
249	228	177	600	557	452	489	497	448	451	451	451	104	309	289	244	198	
-0.59	-0.59	-0.61	0.23	0.12	0.01	0.08	0.10	-0.01	3.34	3.34	3.34	-0.66	0.07	0.18	0.23	-0.06	
														3,812	3,551	3,173	
														1.32	1.28	1.23	
3,012	2,853	2,415	2,828	2,697	2,412	2,659	2,574	2,421	2,593	2,593	2,593	3,867	3,009	2,878	2,775	2,589	
0.07	0.06	0.00	0.06	0.05	0.00	0.03	-0.01	-0.07	-0.33	-0.33	-0.33	0.28	0.05	0.04	0.07	-0.01	
														5,328	4,875	4,411	
														1.32	1.28	1.23	
3,896	3,668	3,043	3,976	3,763	3,290	3,722	3,617	3,361	3,555	3,555	3,555	4,846	4,209	4,023	3,810	3,599	
-0.02	-0.03	-0.08	0.07	0.04	-0.02	0.05	0.02	-0.05	-0.27	-0.27	-0.27	0.15	0.05	0.06	0.06	-0.02	

:(5)

()

:(2/)

2010			2009			2008			2007			2006	2005	2004	2003	2002	
1356	1129	767	1334	1016	614	1101	893	478	347	346	347	-136	-773				
-	-	-	-	-	-	-	-	-	-	-	-	-	-	-	-	-	
3,199	2,884	2,673	2,787	2,761	2,665	2,578	2,654	2,641	2,575	2,576	2,575	2,567	2,509	2,159	2,338	-1,800	
-	-	-	-	-	-	-	-	-	-	-	-	-	-	-	-	-	
2,658	2,393	2,223	2,331	2,312	2,235	2,183	2,250	2,241	2,222	2,223	2,222	2,259	2,207	1,939	1,673	-1,264	
548	538	474	530	509	462	503	488	456	461	461	461	455	441	402	430	444	
3,207	2,931	2,697	2,862	2,822	2,698	2,686	2,739	2,698	2,683	2,684	2,683	2,713	2,648	2,341	2,103	1,708	
-541	-491	-450	-455	-449	-430	-395	-404	-400	-353	-353	-353	-308	-302	-220	-666	-536	
44	44	41	48	47	44	54	53	51	63	63	63	72	70	57	13	14	
585	535	492	503	496	474	448	457	450	416	416	416	381	372	277	679	550	
658	616	422	626	557	417	564	517	424	453	453	453	491	266	303	334	247	
3,898	3,397	3,018	3,496	3,221	2,861	3,115	3,030	2,694	2,469	2,469	2,469	1,940	1,469				
3,998	3,497	3,118	3,596	3,321	2,961	3,215	3,130	2,794	2,569	2,569	2,569	2,040	1,569				
-100	-100	-100	-100	-100	-100	-100	-100	-100	-100	-100	-100	-100	-100				
-	-	-	-	-	-	-	-	-	-	-	-	-	-				
1,356	1,129	-767	1,334	1,016	-614	1,101	-893	-478	-347	-346	-347	136	773				

:(5)

:(3/)

2010	2009	2008	2007	2010	2009	2008	2007	2010	2009	2008	2007	
190	190	190	180	120	120	120	180	180	180	180	180	
135	135	130	116	60	65	80	116	70	85	95	116	
0.10	0.08	0.05	0.00	0.10	0.08	0.05	0.00	0.10	0.08	0.05	0.00	()
159	156	153	150	159	156	153	150	159	156	153	150	()
0.56	0.56	0.56	0.56	0.56	0.56	0.56	0.56	0.56	0.56	0.56	0.56	
0.56	0.56	0.56	0.56	0.56	0.56	0.56	0.56	0.56	0.56	0.56	0.56	
0.50	0.50	0.50	0.50	0.50	0.50	0.50	0.50	0.50	0.50	0.50	0.50	
0.50	0.50	0.50	0.50	0.50	0.50	0.50	0.50	0.50	0.50	0.50	0.50	
0.04	0.04	0.04	0.04	0.04	0.04	0.04	0.04	0.04	0.04	0.04	0.04	()
250	250	250	500	1,000	1,000	1,000	500	500	500	500	500	()
250	250	250	500	1,000	1,000	1,000	500	500	500	500	500	()
4.26	4.28	4.28	4.28	4.26	4.28	4.28	4.28	4.26	4.28	4.28	4.28	
0.05	0.05	0.05	0.05	0.05	0.05	0.05	0.05	0.05	0.05	0.05	0.05	()
0.04	0.04	0.04	0.05	0.04	0.04	0.04	0.05	0.04	0.04	0.04	0.05	
0.06	0.06	0.06	0.06	0.06	0.06	0.06	0.06	0.06	0.06	0.06	0.06	
+28	+55	+88	=110	+192.5	+165	+132	+110	+110	+110	+110	+110	
0	0	0	0	0	0	0	0	0	0	0	0	()
0.01	0.01	0.01	0.01	0.01	0.01	0.01	0.01	0.01	0.01	0.01	0.01)
0.03	0.03	0.02	0.01	0.03	0.03	0.02	0.01	0.03	0.03	0.02	0.01	() (
0.03	0.03	0.03	0.03	0.03	0.03	0.03	0.03	0.03	0.03	0.03	0.03) () (1997
0.09	0.09	0.09	0.09	0.09	0.09	0.09	0.09	0.09	0.09	0.09	0.09) () (1997
0	0	0	0	0	0	0	0	0	0	0	0	
0.15	0.15	0.15	0.15	0.15	0.15	0.15	0.15	0.15	0.15	0.15	0.15	
0.14	0.14	0.14	0.14	0.14	0.14	0.14	0.14	0.14	0.14	0.14	0.14	
0.11	0.11	0.11	0.11	0.11	0.11	0.11	0.11	0.11	0.11	0.11	0.11	
0.60	0.60	0.60	0.60	0.60	0.60	0.60	0.60	0.60	0.60	0.60	0.60	
0	0	0	0	0	0	0	0	0	0	0	0	
0.03	0.03	0.02	0.01	0.03	0.03	0.02	0.01	0.03	0.03	0.02	0.01	()
58	60	62	64	67	66	65	64	64	64	64	64	()

:(5)

:(3/)

412,037.8	140,341.0	23,960.7	82,150.8	46,637.7	55,195.1	63,752.5			2002
505,727.0	167,047.8	29,538.9	98,802.6	66,717.3	63,661.5	79,958.8			2003
527,715.0	184,172.5	28,496.6	102,376.7	61,742.7	67,019.8	83,906.7			2004
574,325.3	196,194.6	32,509.0	114,636.9	73,573.0	74,143.3	83,268.6			2005
606,880.5	213,732.7	34,317.6	120,412.8	66,829.1	74,655.9	96,932.3			2006
596,320.9	204,411.7	33,828.7	117,680.7	71,616.1	76,174.6	92,609.1			2007
596,344.5	204,419.8	33,830.0	117,685.4	71,618.9	76,177.6	92,612.7			
596,342.9	204,419.3	33,830.0	117,685.1	71,618.7	76,177.4	92,612.5			
605,666.3	207,615.3	34,358.9	119,525.0	72,738.4	77,368.4	94,060.4			2008
628,997.3	215,612.8	35,682.4	124,129.2	75,540.4	80,348.7	97,683.8			
636,541.8	218,199.0	36,110.4	125,618.1	76,446.5	81,312.4	98,855.4			
615,944.1	211,138.3	34,941.9	121,553.2	73,972.8	78,681.2	95,656.6			2009
664,421.9	227,756.0	37,692.0	131,120.1	79,794.8	84,873.8	103,185.2			
683,800.7	234,398.8	38,791.4	134,944.4	82,122.1	87,349.3	106,194.8			
635,350.7	217,790.7	36,042.8	125,383.0	76,303.4	81,160.3	98,670.4			2010
715,765.1	245,355.8	40,604.7	141,252.4	85,960.9	91,432.5	111,158.9			
754,920.2	258,777.7	42,825.9	148,979.4	90,663.3	96,434.2	117,239.7			