
First published in the *Government Gazette*, Electronic Edition, on 25th January 2006 at 5:00 pm.

No. S 41

PROTECTED AREAS AND PROTECTED PLACES ACT
(CHAPTER 256)

PROTECTED PLACES (NO. 2)
ORDER 2006

ARRANGEMENT OF PARAGRAPHS

Paragraph

1. Citation and commencement
 2. Premises declared to be protected places
- The Schedule
-

In exercise of the powers conferred by section 5 (1) of the Protected Areas and Protected Places Act, the Minister for Home Affairs hereby makes the following Order:

Citation and commencement

1. This Order may be cited as the Protected Places (No. 2) Order 2006 and shall come into operation on 25th January 2006.

Premises declared to be protected places

2. The premises described in the second column of the Schedule are hereby declared to be protected places for the purposes of the Act, and no person shall be in those premises unless he is in possession of a pass-card or permit issued by the authority specified in the first column of the Schedule or has received the permission of an authorised officer on duty at the premises to enter the premises.

 THE SCHEDULE

First column
 The Authority
 Director,
 3P Network Department

Second column
 Protected Place

(1) UPPER PEIRCE OUTLET WORKS.

All that area comprised in part of State Land Lot MK15-2506A-PART, off Old Upper Thomson Road, occupied by "UPPER PEIRCE OUTLET WORKS" containing an area of about 4,583.287 square metres and bounded approximately as follows:

Commencing at the corner of the aforesaid "UPPER PEIRCE OUTLET WORKS" which point is 39,230.154 metres North and 24,812.054 metres East of the Singapore Land Authority SVY 21 Datum, the boundaries run along successive lines of co-ordinates approximately as follows:

<i>Northing</i>	<i>Easting</i>
39,226.219	24,819.185
39,219.845	24,830.566
39,214.943	24,839.134
39,192.892	24,821.310
39,191.295	24,848.679
39,158.063	24,844.997
39,158.369	24,833.895
39,151.912	24,833.541
39,153.010	24,786.681
39,150.928	24,786.534
39,149.432	24,783.394
39,015.316	24,781.297
39,014.593	24,783.625
39,013.938	24,784.893
39,012.833	24,786.325
39,011.441	24,787.675
39,019.009	24,788.575
39,008.412	24,789.189
39,006.530	24,789.645
39,004.074	24,789.727

THE SCHEDULE — *continued*

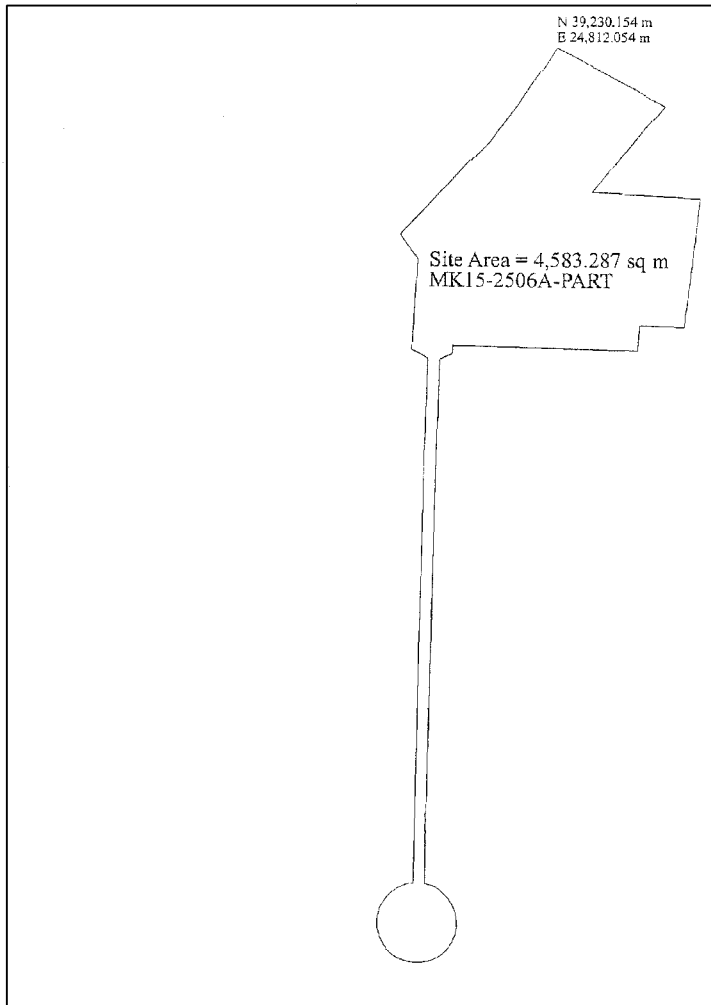
<i>First column</i>		<i>Second column</i>
The Authority		Protected Place
	<i>Northing</i>	<i>Easting</i>
	39,002.109	24,789.278
	39,000.227	24,788.460
	38,998.590	24,787.397
	38,997.198	24,785.843
	38,996.298	24,784.493
	38,995.643	24,783.144
	38,995.152	24,781.467
	38,995.028	24,779.525
	38,995.193	24,777.704
	38,995.643	24,775.986
	38,996.502	24,774.186
	38,997.689	24,772.672
	38,998.794	24,771.526
	39,000.145	24,770.667
	39,001.782	24,769.930
	39,003.747	24,769.398
	39,005.232	24,769.317
	39,007.021	24,769.479
	39,009.191	24,770.092
	39,011.237	24,771.278
	39,012.874	24,772.791
	39,014.225	24,774.631
	39,015.002	24,776.554
	39,015.362	24,778.297
	39,149.598	24,780.371
	39,151.940	24,776.174
	39,175.207	24,777.515
	39,177.791	24,775.591
	39,181.667	24,772.916
	39,205.707	24,795.378

THE SCHEDULE — *continued*

<i>First column</i>	<i>Second column</i>	
The Authority	Protected Place	
	<i>Northing</i>	<i>Easting</i>
	39,214.480	24,801.683
	39,215.394	24,802.348

to the point of commencement.

The boundaries of “UPPER PEIRCE OUTLET WORKS” are more particularly delineated in the Plan set out below.



 THE SCHEDULE — *continued*

<i>First column</i>	<i>Second column</i>
The Authority	Protected Place

(2) LOWER PEIRCE PUMPING STATION.

All that area comprised in part of State Land Lot MK15-2506A-PART, Old Upper Thomson Road, occupied by “LOWER PEIRCE PUMPING STATION” containing an area of about 4,578.747 square metres and bounded approximately as follows:

Commencing at the corner of the aforesaid “LOWER PEIRCE PUMPING STATION” which point is 39,150.511 metres North and 27,326.989 metres East of the Singapore Land Authority SVY 21 Datum, the boundaries run along successive lines of co-ordinates approximately as follows:

<i>Northing</i>	<i>Easting</i>
39,149.251	27,327.754
39,144.838	27,330.693
39,138.204	27,330.325
39,116.700	27,332.882
39,113.186	27,330.731
39,100.713	27,349.259
39,068.985	27,327.395
39,061.545	27,324.927
39,057.088	27,322.142
39,051.642	27,318.668
39,060.770	27,301.915
39,064.279	27,297.419
39,068.224	27,292.947
39,128.069	27,264.705
39,129.617	27,267.705
39,134.776	27,278.533
39,135.328	27,279.885
39,140.074	27,287.821
39,146.207	27,298.168
39,135.504	27,303.330

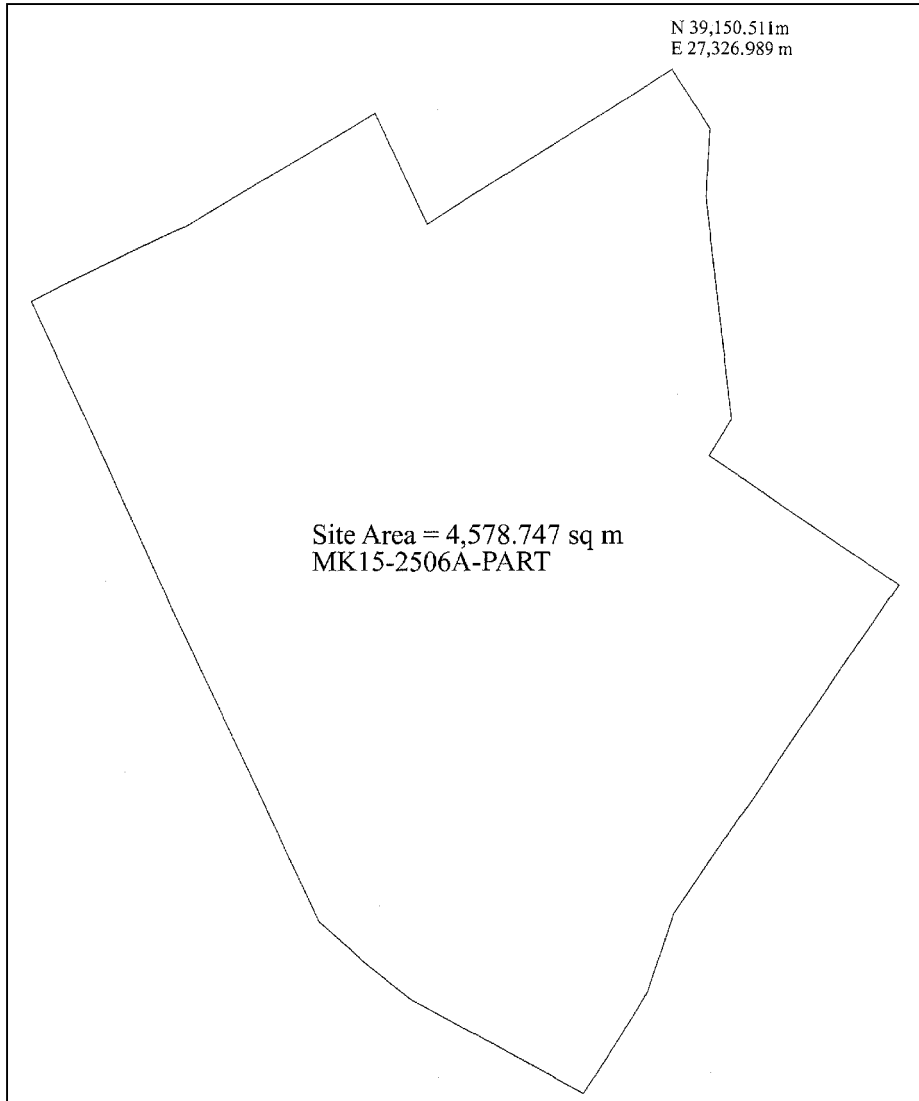
to the point of commencement.

THE SCHEDULE — *continued*

First column
The Authority

Second column
Protected Place

The boundaries of “LOWER PEIRCE PUMPING STATION” are more particularly delineated in the Plan set out below.



 THE SCHEDULE — *continued*

<i>First column</i>	<i>Second column</i>
The Authority	Protected Place

(3) MACRITCHIE I PUMPING STATION.

All that area comprised in part of State Land Lot MK17-5941W-PART, Reservoir Road off Lornie Road, occupied by “MACRITCHIE I PUMPING STATION” containing an area of about 1,317.877 square metres and bounded approximately as follows:

Commencing at the corner of the aforesaid “MACRITCHIE I PUMPING STATION” which point is 36,019.168 metres North and 28,066.299 metres East of the Singapore Land Authority SVY 21 Datum, the boundaries run along successive lines of co-ordinates approximately as follows:

<i>Northing</i>	<i>Easting</i>
36,010.147	28,102.975
36,008.484	28,108.644
36,002.183	28,108.290
35,990.410	28,107.229
35,986.107	28,106.791
35,985.675	28,106.663
35,985.660	28,076.746
35,988.143	28,067.935
35,989.622	28,062.784
35,991.483	28,056.299
35,994.543	28,057.325
35,997.262	28,058.236
36,001.270	28,059.615
36,003.978	28,060.557
36,005.980	28,061.253
36,007.026	28,061.616
36,008.643	28,062.311
36,013.225	28,064.281
36,014.592	28,064.841

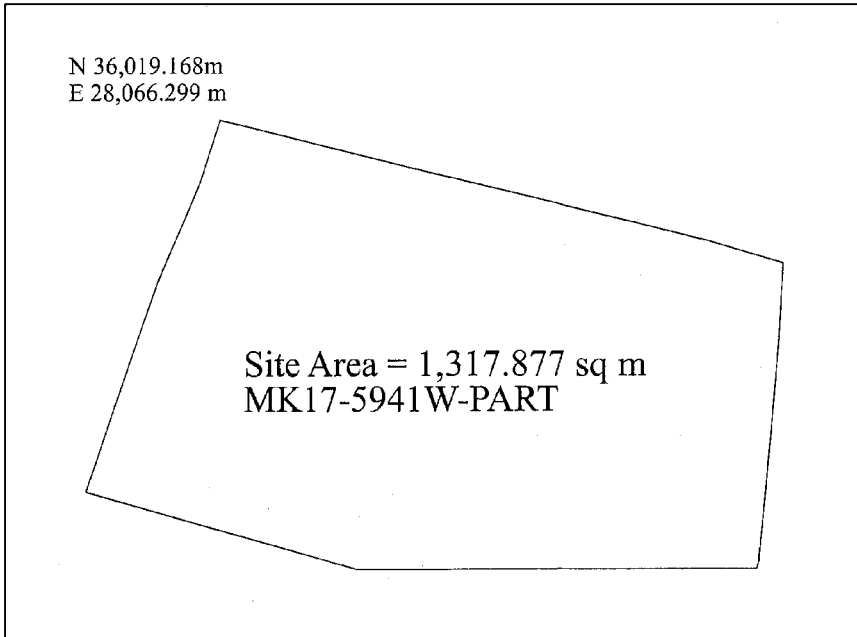
to the point of commencement.

THE SCHEDULE — *continued*

First column
The Authority

Second column
Protected Place

The boundaries of “MACRITCHIE I PUMPING STATION” are more particularly delineated in the Plan set out below.



 THE SCHEDULE — *continued*

First column
The Authority

Second column
Protected Place

(4) MACRITCHIE II PUMPING STATION.

All that area comprised in part of State Land Lot MK17-5941W-PART, Reservoir Road off Lornie Road, occupied by “MACRITCHIE II PUMPING STATION” containing an area of about 1,052.995 square metres and bounded approximately as follows:

Commencing at the corner of the aforesaid “MACRITCHIE II PUMPING STATION” which point is 36,117.639 metres North and 28,229.215 metres East of the Singapore Land Authority SVY 21 Datum, the boundaries run along successive lines of co-ordinates approximately as follows:

<i>Northing</i>	<i>Easting</i>
36,113.774	28,232.941
36,109.246	28,236.985
36,106.055	28,239.804
36,103.842	28,241.896
36,099.891	28,241.917
36,095.442	28,241.886
36,094.657	28,241.868
36,089.423	28,241.781
36,076.731	28,241.608
36,071.502	28,241.363
36,071.412	28,239.144
36,071.352	28,237.422
36,071.309	28,233.148
36,071.217	28,229.814
36,071.232	28,224.844
36,089.812	28,212.678
36,105.391	28,212.464
36,114.407	28,224.605
36,117.009	28,228.130

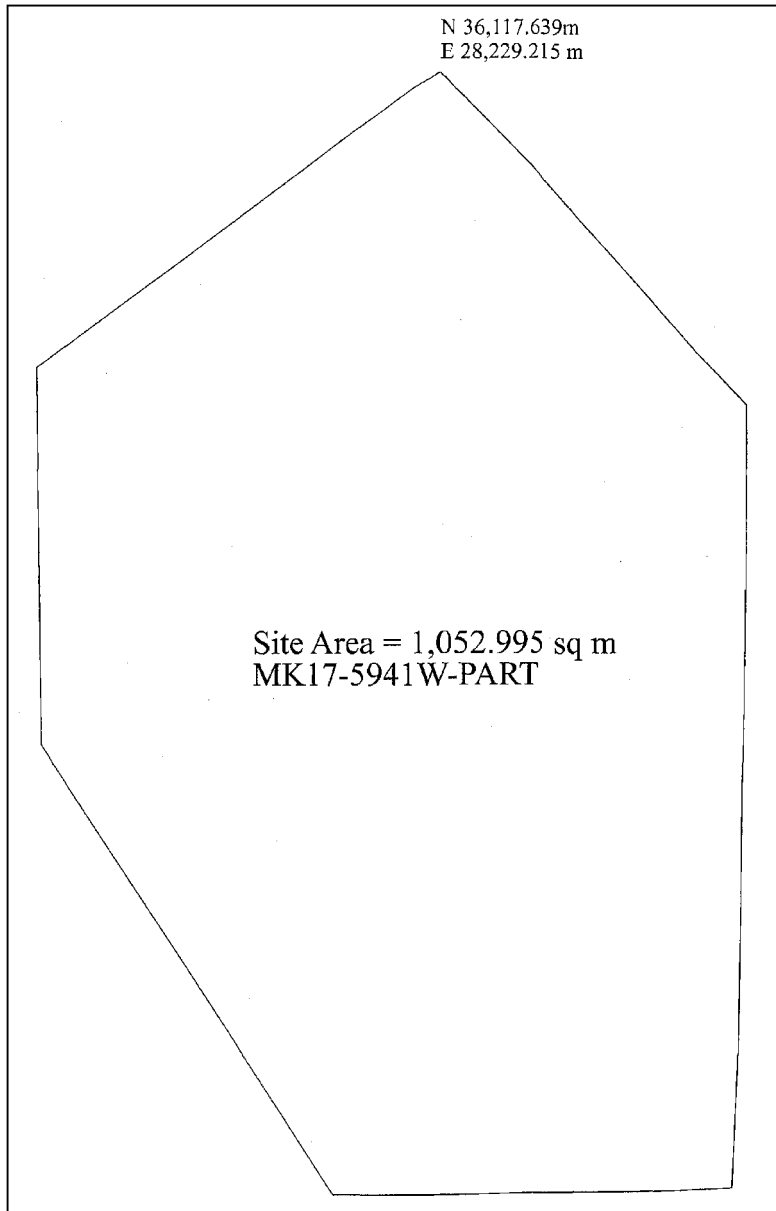
to the point of commencement.

THE SCHEDULE — *continued*

First column
The Authority

Second column
Protected Place

The boundaries of “MACRITCHIE II PUMPING STATION” are more particularly delineated in the Plan set out below.



 THE SCHEDULE — *continued*

First column
The Authority

Second column
Protected Place

(5) BEDOK PUMPING STATION.

All that area comprised in part of State Land Lots MK28-6720A-PART and MK28-6388W-PART, Tampines Avenue 10, occupied by “BEDOK PUMPING STATION” containing an area of about 5,126.229 square metres and bounded approximately as follows:

Commencing at the corner of the aforesaid “BEDOK PUMPING STATION” which point is 36,161.576 metres North and 37,609.096 metres East of the Singapore Land Authority SVY 21 Datum, the boundaries run along successive lines of co-ordinates approximately as follows:

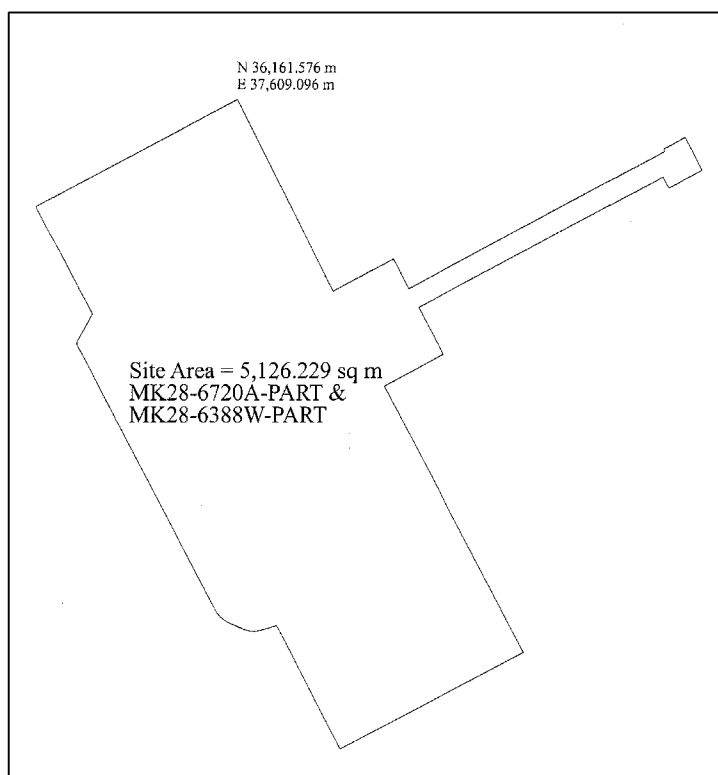
<i>Northing</i>	<i>Easting</i>
36,127.547	37,626.706
36,133.239	37,637.278
36,127.934	37,640.027
36,152.459	37,685.217
36,152.960	37,685.092
36,155.053	37,689.059
36,149.148	37,692.223
36,145.977	37,686.107
36,147.933	37,684.992
36,124.630	37,641.836
36,116.310	37,646.229
36,110.662	37,635.801
36,063.545	37,660.814
36,046.489	37,628.351
36,068.281	37,616.760
36,067.757	37,614.964
36,067.441	37,613.879
36,067.253	37,612.954
36,067.288	37,612.318
36,067.407	37,611.530

THE SCHEDULE — *continued*

<i>First column</i>		<i>Second column</i>
The Authority		Protected Place
	36,067.647	37,610.788
	36,068.419	37,608.923
	36,068.875	37,607.965
	36,069.264	37,607.313
	36,069.711	37,606.723
	36,070.169	37,606.275
	36,070.835	37,605.811
	36,118.263	37,580.593
	36,123.483	37,583.423
	36,142.537	37,573.246

to the point of commencement.

The boundaries of “BEDOK PUMPING STATION” are more particularly delineated in the Plan set out below.



 THE SCHEDULE — *continued*

First column
The Authority

Second column
Protected Place

(6) KRANJI I PUMPING STATION.

All that area comprised in part of State Land Lot MK12-951V-PART, off Neo Tiew Lane 2, occupied by “KRANJI I PUMPING STATION” containing an area of about 4,027.755 square metres and bounded approximately as follows:

Commencing at the corner of the aforesaid “KRANJI I PUMPING STATION” which point is 44,203.942 metres North and 16,377.083 metres East of the Singapore Land Authority SVY 21 Datum, the boundaries run along successive lines of co-ordinates approximately as follows:

<i>Northing</i>	<i>Easting</i>
44,170.950	16,411.132
44,149.899	16,389.300
44,143.769	16,395.363
44,132.276	16,383.824
44,138.108	16,378.144
44,131.848	16,370.343
44,117.668	16,357.621
44,117.158	16,357.165
44,115.618	16,355.566
44,142.039	16,329.249
44,138.434	16,325.965
44,148.937	16,317.469
44,153.534	16,322.066
44,174.091	16,342.676
44,178.885	16,343.100
44,182.196	16,347.053
44,181.398	16,354.068

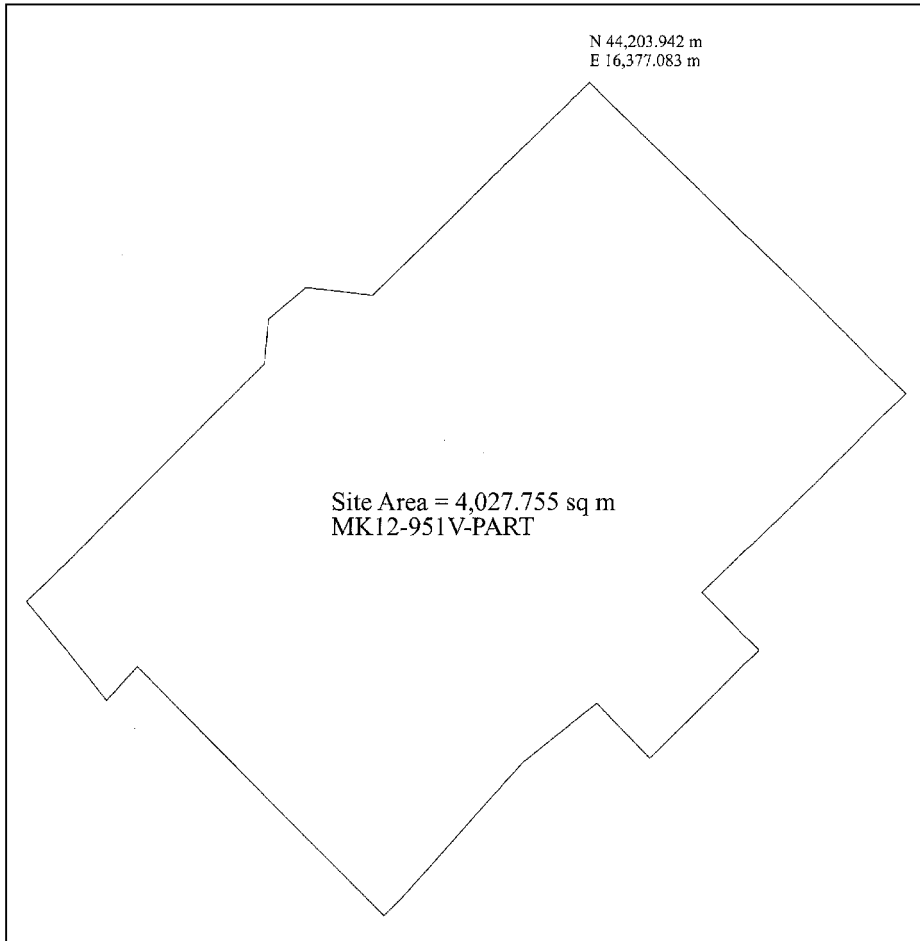
to the point of commencement.

THE SCHEDULE — *continued*

First column
The Authority

Second column
Protected Place

The boundaries of “KРАНJI I PUMPING STATION” are more particularly delineated in the Plan set out below.



 THE SCHEDULE — *continued*

First column
The Authority

Second column
Protected Place

(7) KRANJI II PUMPING STATION.

All that area comprised in part of State Land Lot MK11-3249K-PART, off Sungei Kadut Drive, occupied by “KRANJI II PUMPING STATION” containing an area of about 1,314.390 square metres and bounded approximately as follows:

Commencing at the corner of the aforesaid “KRANJI II PUMPING STATION” which point is 45,203.413 metres North and 18,103.332 metres East of the Singapore Land Authority SVY 21 Datum, the boundaries run along successive lines of co-ordinates approximately as follows:

<i>Northing</i>	<i>Easting</i>
45,186.920	18,128.982
45,180.275	18,124.781
45,173.784	18,135.115
45,172.440	18,134.801
45,167.555	18,132.662
45,166.900	18,131.105
45,167.009	18,117.894
45,155.815	18,107.259
45,171.384	18,082.638
45,183.085	18,090.208
45,188.215	18,093.425

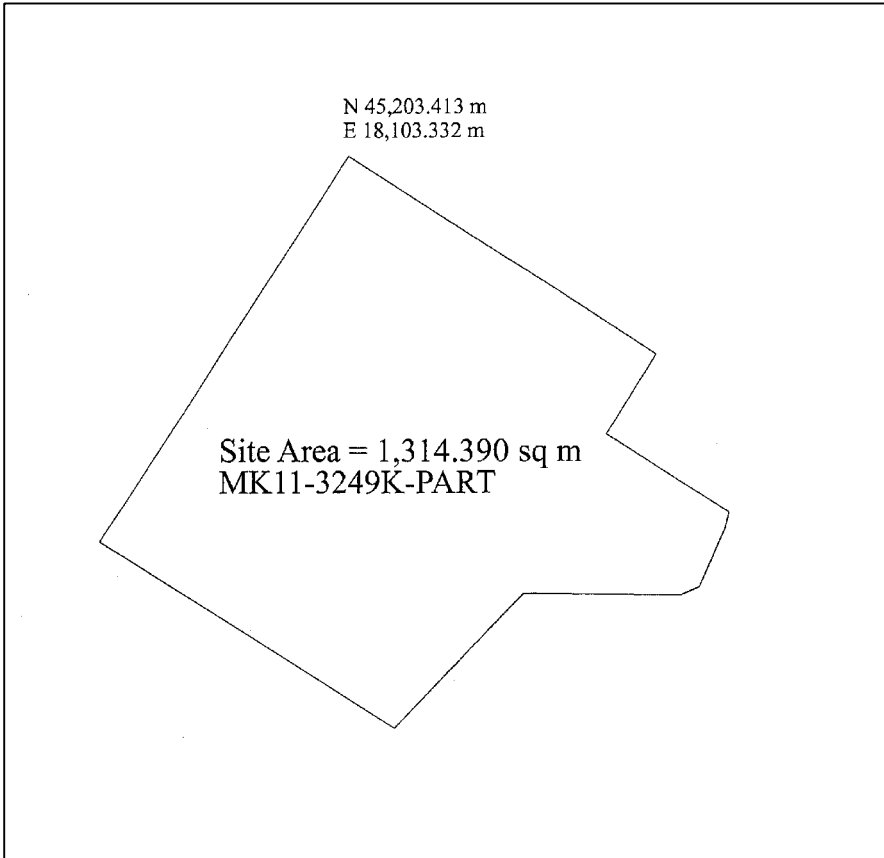
to the point of commencement.

THE SCHEDULE — *continued*

First column
The Authority

Second column
Protected Place

The boundaries of “KРАНJI II PUMPING STATION” are more particularly delineated in the Plan set out below.



 THE SCHEDULE — *continued*

First column
The Authority

Second column
Protected Place

(8) PANDAN II PUMPING STATION.

All that area comprised in part of State Land Lot MK05-99779W-PART, off West Coast Road, occupied by “PANDAN II PUMPING STATION” containing an area of about 1,429.720 square metres and bounded approximately as follows:

Commencing at the corner of the aforesaid “PANDAN II PUMPING STATION” which point is 33,466.275 metres North and 17,883.386 metres East of the Singapore Land Authority SVY 21 Datum, the boundaries run along successive lines of co-ordinates approximately as follows:

<i>Northing</i>	<i>Easting</i>
33,459.171	17,917.572
33,458.056	17,922.776
33,453.854	17,942.751
33,452.738	17,947.936
33,451.861	17,951.797
33,433.556	17,947.410
33,441.158	17,911.049
33,441.234	17,909.658
33,434.812	17,908.379
33,436.323	17,902.112
33,441.516	17,903.365
33,443.726	17,901.317
33,449.254	17,874.706
33,461.595	17,877.118
33,463.203	17,879.176
33,465.778	17,882.686

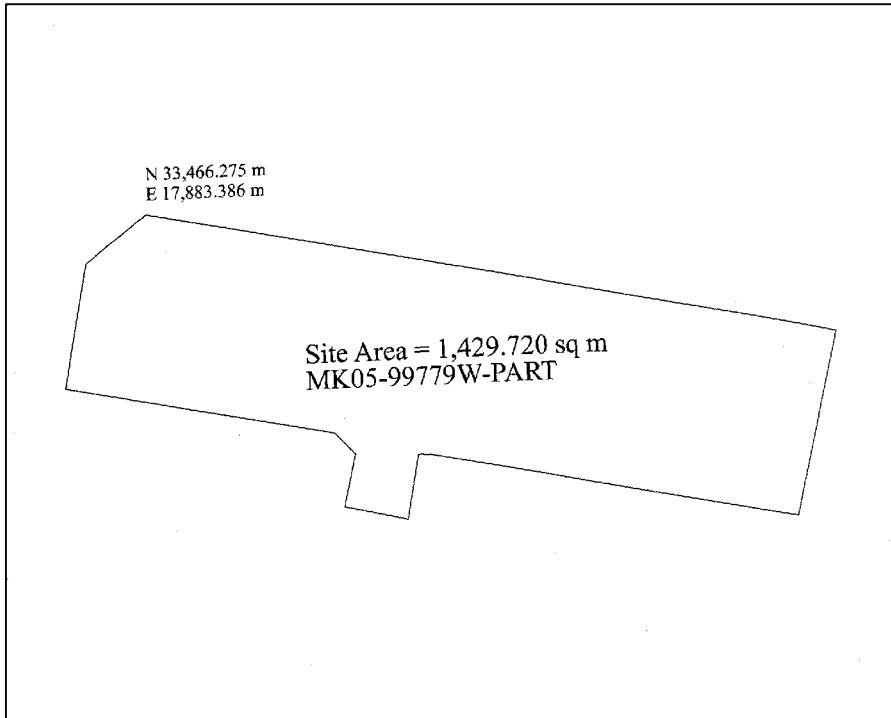
to the point of commencement.

THE SCHEDULE — *continued*

First column
The Authority

Second column
Protected Place

The boundaries of “PANDAN II PUMPING STATION” are more particularly delineated in the Plan set out below.



 THE SCHEDULE — *continued*

First column
The Authority

Second column
Protected Place

(9) LOWER SELETAR PUMPING STATION.

All that area comprised in part of State Land Lot MK20-3884V-PART, Seletar Club Road, occupied by “LOWER SELETAR PUMPING STATION” containing an area of about 11,294.145 square metres and bounded approximately as follows:

Commencing at the corner of the aforesaid “LOWER SELETAR PUMPING STATION” which point is 44,278.994 metres North and 30,974.169 metres East of the Singapore Land Authority SVY 21 Datum, the boundaries run along successive lines of co-ordinates approximately as follows:

<i>Northing</i>	<i>Easting</i>
44,278.899	30,974.286
44,277.591	30,973.221
44,276.637	30,974.571
44,270.558	30,982.213
44,270.450	30,982.319
44,230.219	31,032.208
44,194.328	31,003.012
44,190.351	30,999.737
44,117.648	30,940.633
44,165.252	30,881.789
44,164.979	30,881.569
44,165.073	30,881.452
44,169.187	30,884.769
44,173.082	30,887.905
44,203.884	30,912.869
44,212.513	30,902.275
44,213.000	30,902.606
44,226.335	30,913.275
44,226.602	30,913.488
44,226.899	30,913.827

THE SCHEDULE — *continued*

<i>First column</i>		<i>Second column</i>
The Authority		Protected Place
	44,227.138	30,914.221
	44,227.309	30,914.649
	44,227.401	30,915.093
	44,227.476	30,915.780
	44,227.498	30,916.489
	44,227.395	30,917.170
	44,227.093	30,917.760
	44,220.205	30,926.108
	44,220.929	30,926.702
	44,224.068	30,929.282
	44,224.791	30,929.877
	44,228.654	30,933.052
	44,232.517	30,936.226
	44,236.379	30,939.401
	44,240.242	30,942.576
	44,240.957	30,943.164
	44,244.104	30,945.751
	44,244.820	30,346.339
	44,247.978	30,948.911
	44,248.697	30,949.496
	44,251.855	30,952.068
	44,255.732	30,955.226
	44,259.609	30,958.383
	44,263.486	30,961.540
	44,267.363	30,964.698
	44,271.240	30,967.855
	44,275.117	30,971.012

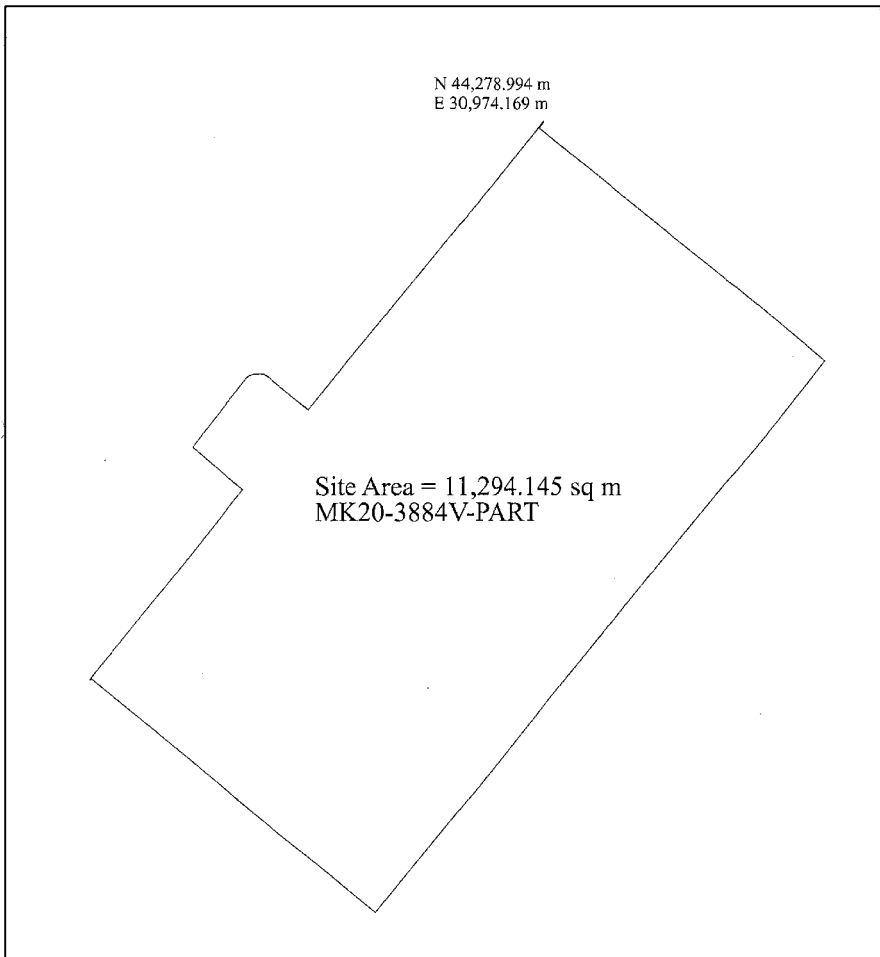
to the point of commencement.

THE SCHEDULE — *continued*

First column
The Authority

Second column
Protected Place

The boundaries of “LOWER SELETAR PUMPING STATION” are more particularly delineated in the Plan set out below.



THE SCHEDULE — *continued*

First column
The Authority

Second column
Protected Place

(10) UPPER SELETAR PUMPING STATION.

All that area comprised in part of State Land Lot MK14-1482K-PART, Track 7 off Mandai Road, occupied by “UPPER SELETAR PUMPING STATION” containing an area of about 5,810.467 square metres and bounded approximately as follows:

Commencing at the corner of the aforesaid “UPPER SELETAR PUMPING STATION” which point is 42,598.080 metres North and 25,243.114 metres East of the Singapore Land Authority SVY 21 Datum, the boundaries run along successive lines of co-ordinates approximately as follows:

<i>Northing</i>	<i>Easting</i>
42,564.269	25,261.056
42,550.492	25,268.392
42,543.136	25,266.447
42,512.715	25,283.046
42,506.744	25,272.229
42,503.720	25,266.887
42,492.733	25,246.778
42,491.112	25,243.492
42,490.351	25,242.693
42,487.824	25,237.634
42,508.042	25,219.824
42,524.801	25,207.687
42,555.184	25,186.804
42,566.006	25,191.309
42,571.862	25,198.496
42,582.505	25,216.251
42,595.181	25,237.817

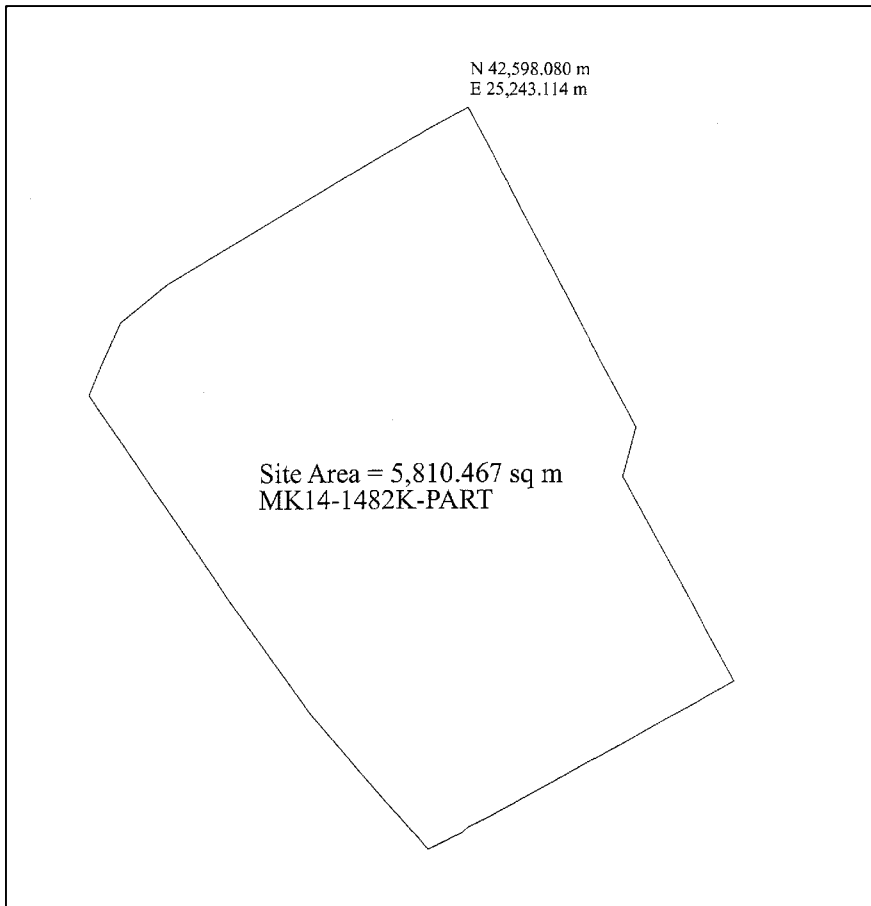
to the point of commencement.

THE SCHEDULE — *continued*

First column
The Authority

Second column
Protected Place

The boundaries of “UPPER SELETAR PUMPING STATION” are more particularly delineated in the Plan set out below.



THE SCHEDULE — *continued*

First column
The Authority

Second column
Protected Place

(11) TENGEH PUMPING STATION.

All that area comprised in part of State Land Lots MK07-3124T-PART, MK07-99927T-PART and MK07-99960P-PART, off Pasir Laba Road, occupied by “TENGEH PUMPING STATION” containing an area of about 4,581.907 square metres and bounded approximately as follows:

Commencing at the corner of the aforesaid “TENGEH PUMPING STATION” which point is 35,621.717 metres North and 8,977.987 metres East of the Singapore Land Authority SVY 21 Datum, the boundaries run along successive lines of co-ordinates approximately as follows:

<i>Northing</i>	<i>Easting</i>
35,619.541	9,009.259
35,618.143	9,029.351
35,615.388	9,075.245
35,607.954	9,078.209
35,600.239	9,077.765
35,600.416	9,074.945
35,584.442	9,074.247
35,577.897	9,073.975
35,553.408	9,072.377
35,554.725	9,052.449
35,566.476	9,037.771
35,578.616	9,026.459
35,582.664	8,991.039
35,592.395	8,975.934
35,615.671	8,977.640
35,616.707	8,977.716

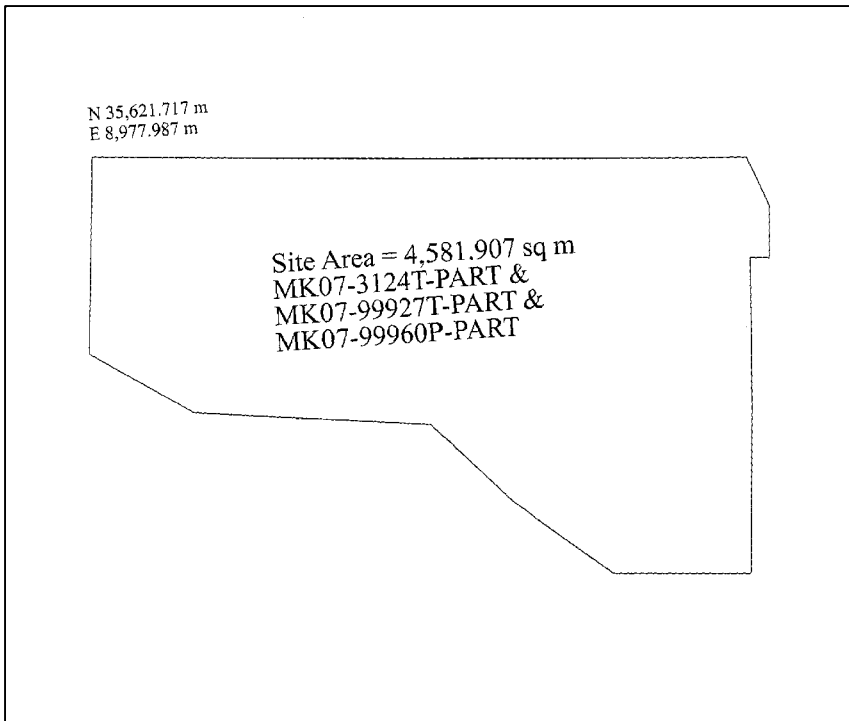
to the point of commencement.

THE SCHEDULE — *continued*

First column
The Authority

Second column
Protected Place

The boundaries of “TENGEH PUMPING STATION” are more particularly delineated in the Plan set out below.



 THE SCHEDULE — *continued*

First column
The Authority

Second column
Protected Place

(12) JURONG PUMPING STATION.

All that area comprised in part of State Land Lot MK06-1783X-PART, off Yuan Ching Road, occupied by “JURONG PUMPING STATION” containing an area of about 1,425.337 square metres and bounded approximately as follows:

Commencing at the corner of the aforesaid “JURONG PUMPING STATION” which point is 36,296.412 metres North and 15,663.982 metres East of the Singapore Land Authority SVY 21 Datum, the boundaries run along successive lines of co-ordinates approximately as follows:

<i>Northing</i>	<i>Easting</i>
36,276.957	15,685.097
36,266.584	15,675.639
36,264.953	15,677.555
36,259.748	15,672.877
36,259.954	15,672.645
36,252.618	15,665.835
36,252.498	15,665.970
36,247.441	15,661.425
36,249.110	15,659.644
36,242.109	15,653.197
36,253.999	15,640.306
36,257.553	15,636.613
36,261.966	15,631.733

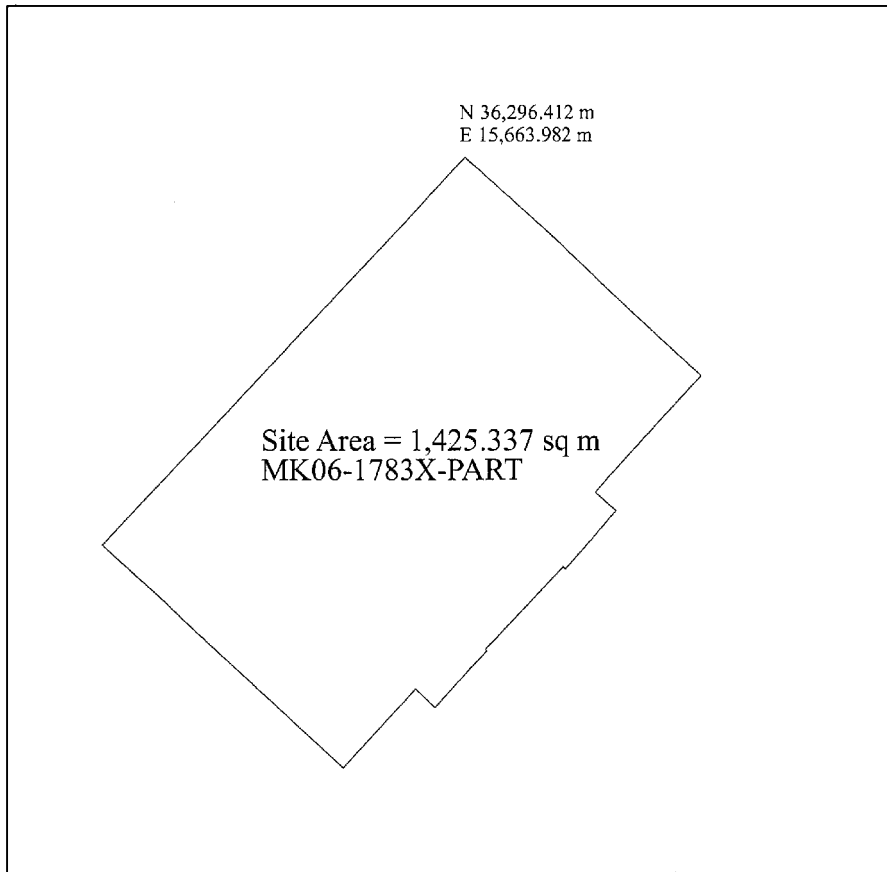
to the point of commencement.

THE SCHEDULE — *continued*

First column
The Authority

Second column
Protected Place

The boundaries of “JURONG PUMPING STATION” are more particularly delineated in the Plan set out below.



 THE SCHEDULE — *continued*

First column
The Authority

Second column
Protected Place

(13) WEST SELETAR PUMPING STATION.

All that area comprised in part of State Land Lot MK14-1482K-PART, Track 15 off Mandai Lake Road, occupied by “WEST SELETAR PUMPING STATION” containing an area of about 5,262.984 square metres and bounded approximately as follows:

Commencing at the corner of the aforesaid “WEST SELETAR PUMPING STATION” which point is 41,890.583 metres North and 22,456.414 metres East of the Singapore Land Authority SVY 21 Datum, the boundaries run along successive lines of co-ordinates approximately as follows:

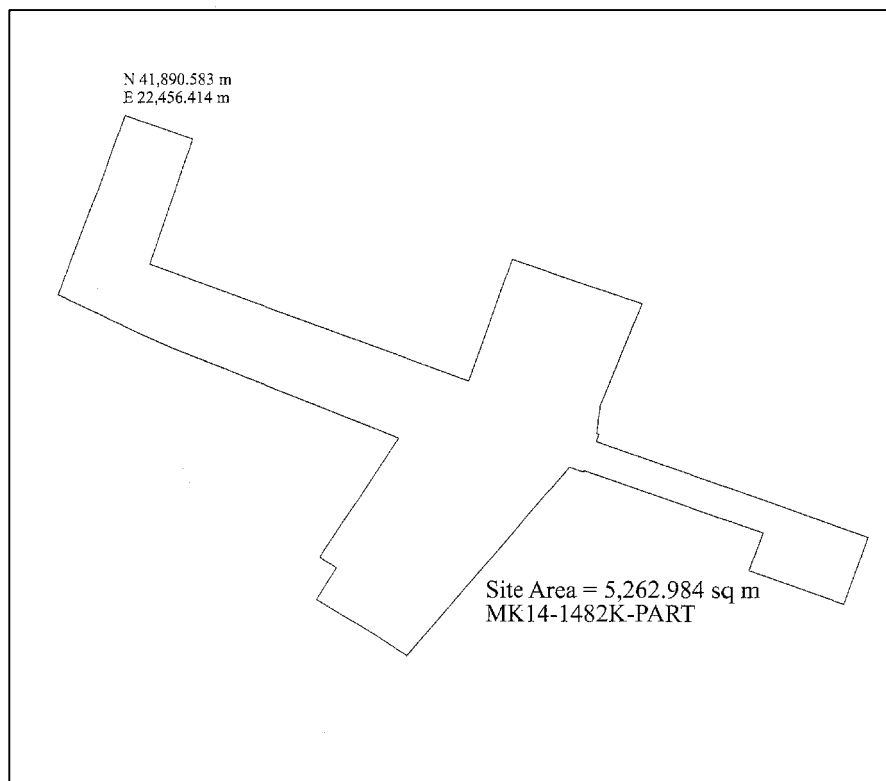
<i>Northing</i>	<i>Easting</i>
41,885.395	22,471.540
41,857.646	22,462.159
41,831.819	22,533.139
41,858.745	22,542.756
41,848.944	22,571.615
41,826.425	22,562.487
41,820.732	22,561.921
41,820.264	22,561.783
41,820.057	22,562.287
41,818.473	22,561.742
41,797.317	22,621.807
41,782.580	22,616.445
41,790.020	22,595.164
41,798.325	22,598.183
41,812.063	22,559.180
41,811.766	22,558.992
41,812.823	22,555.901
41,771.090	22,519.686
41,775.619	22,512.722
41,783.486	22,499.592
41,790.512	22,504.090

THE SCHEDULE — *continued*

<i>First column</i>		<i>Second column</i>
The Authority		Protected Place
	41,792.875	22,500.247
	41,819.204	22,517.750
	41,839.179	22,466.987
	41,841.856	22,461.011
	41,843.650	22,457.010
	41,845.444	22,453.008
	41,850.842	22,442.031

to the point of commencement.

The boundaries of “WEST SELETAR PUMPING STATION” are more particularly delineated in the Plan set out below.



Made this 18th day of January 2006.

BENNY LIM
*Permanent Secretary,
Ministry of Home Affairs,
Singapore.*

[CP/C/198/39/1; MHA (PS) 12/2/02 TF 1;
AG/LEG/SL/256/2002/1 Vol. 7]