



Tonga

**FISHERIES (COASTAL COMMUNITIES)
(AMENDMENT) REGULATIONS 2016**



FISHERIES (COASTAL COMMUNITIES) (AMENDMENT) REGULATIONS 2016

Arrangement of Sections

Regulation

1	Short Title and Interpretation.....	5
2	Regulation 2 amended	5
3	Replacing reference to Secretary with CEO	6
4	Regulations 6 and 7 replaced	6
5	Regulation 8 amended	7
6	Regulation 12 amended	7
7	Regulation 16 amended	7
8	Schedule I replaced.....	8



FISHERIES (COASTAL COMMUNITIES) (AMENDMENT) REGULATIONS 2016

FISHERIES MANAGEMENT ACT 2002

IN EXERCISE of the powers conferred by section 15(1) and 101(2)(b) of the Fisheries Management Act 2002, the Minister responsible for Fisheries makes the following Regulations -

1 Short Title and Interpretation

- (1) These Regulation may be cited as the Fisheries (Coastal Communities) (Amendment) Regulations 2016.
- (2) In these Regulations, the Fisheries (Coastal Communities) Regulations 2009, shall be referred to as the “Principal Regulations”.

2 Regulation 2 amended

Regulations 2 of the Principal Regulations is amended by inserting the following new word and its definition in the appropriate place –

““CEO” means the Chief Executive Officer responsible for fisheries;”.

3 Replacing reference to Secretary with CEO

The Principal Regulations is amended by deleting the word “Secretary” wherever appearing, and replacing them with the word “CEO”.

4 Regulations 6 and 7 replaced

The Principal Regulations is amended by deleting regulations 6 and 7 and replacing them with the following –

“6 Membership

- (1) A Committee shall comprise of the following members -
 - (a) the Chairperson who shall be elected by the coastal community;
 - (b) the Town Officer of the coastal community;
 - (c) the District Officer of the district within which the coastal community is situated;
 - (d) one representative of the Ministry to be nominated by the CEO;
 - (e) two members representing the interests of fishermen elected by the community;
 - (f) two members representing the interests of women elected by the community; and
 - (g) three representatives of the coastal community to be nominated by the Chairperson.
- (2) The Committee may co-opt any person to participate in meetings and provide advice.

7 Procedures

The Committee shall develop its own rules and procedures for the conduct of its business and its meetings with the guidance of the CEO, and such rules and procedures shall comply with the provisions of the Act, these Regulations and any standards and guidelines approved by the CEO.”.

5 Regulation 8 amended

Regulation 8 of the Principal Regulations is amended by deleting sub-regulation (1) and replacing it with the following –

“(1) The members of the Committee to be elected by the coastal community under regulation 6(1)(e) and (f), shall be elected by a majority vote of the relevant coastal community, in a meeting convened by the Chairperson of the Committee and the Ministry.”.

6 Regulation 12 amended

Regulation 12(2) of the Principal Regulations is amended by –

- (a) renumbering paragraph (h) as paragraph (i), and renumbering the remaining paragraphs accordingly; and
- (b) inserting the following new paragraph (h) –
 - “(h) collect such data as is necessary to effectively monitor the operations and effectiveness of the Plan and maintain such data in a form required by the CEO which may include electronic storage and the use of a database provided by the CEO for that purpose;”.

7 Regulation 16 amended

Regulation 16 of the Principal Regulations is amended by –

- (a) renumbering sub-regulation (2) as sub-regulation (3), and by renumbering the remaining sub-regulations accordingly; and
- (b) inserting the following new sub-regulation (2) –
 - “(2) Any register may be kept electronically and shall, when so required by the CEO be kept on a database provided by the CEO for that purpose.”.

8 Schedule I replaced

Schedule I of the Principal Regulations is repealed and replaced with the following –

“SCHEDULE I

1. ‘Ovaka Coastal Community
2. Felemea Coastal Community
3. ‘Atata Coastal Community
4. Ha’afeva Coastal Community
5. ‘Eueiki Coastal Community
6. ‘O’ua Coastal Community
7. Nomuka Coastal Community
8. Nomuka (Tonumea, Kelefesia)
9. Taunga Coastal Community
10. Kotu Coastal Community
11. Kolonga Coastal Community

Special Management Area of ‘Ovaka (Vava’u)

The areas inside the following straight boundary lines drawn between the Geographical Boundary Points with geographical coordinates outlined in Map 1 of Schedule 1, shall be a Special Management Area for purpose of coastal community management:

Point	Latitude	Longitude
1	18° 44’ 19.14” S	174° 05’ 58.09” W
2	18° 44’ 26.30” S	174° 05’ 26.52” W

Fisheries (Coastal Communities)
(Amendment) Regulations 2016

3	18° 44' 26.12" S	174° 05' 15.58" W
4	18° 44' 49.96" S	174° 04' 41.81" W
5	18° 45' 27.22" S	174° 04' 33.67" W
6	18° 44' 56.65" S	174° 04' 30.97" W
7	18° 45' 46.65" S	174° 04' 38.78" W
8	18° 46' 11.68" S	174° 04' 51.92" W
9	18° 46' 25.93" S	174° 05' 14.28" W
10	18° 46' 10.49" S	174° 05' 40.31" W
11	18° 45' 46.58" S	174° 06' 09.29" W
12	18° 45' 37.37" S	174° 06' 09.65" W
13	18° 45' 26.64" S	174° 06' 05.15" W
14	18° 45' 09.90" S	174° 05' 59.68" W
15	18° 45' 09.86" S	174° 06' 46.55" W
16	18° 44' 59.39" S	174° 06' 59.36" W
17	18° 44' 42.72" S	174° 07' 00.88" W
18	18° 44' 29.72" S	174° 06' 37.44" W
19	18° 44' 24.00" S	174° 06' 14.18" W

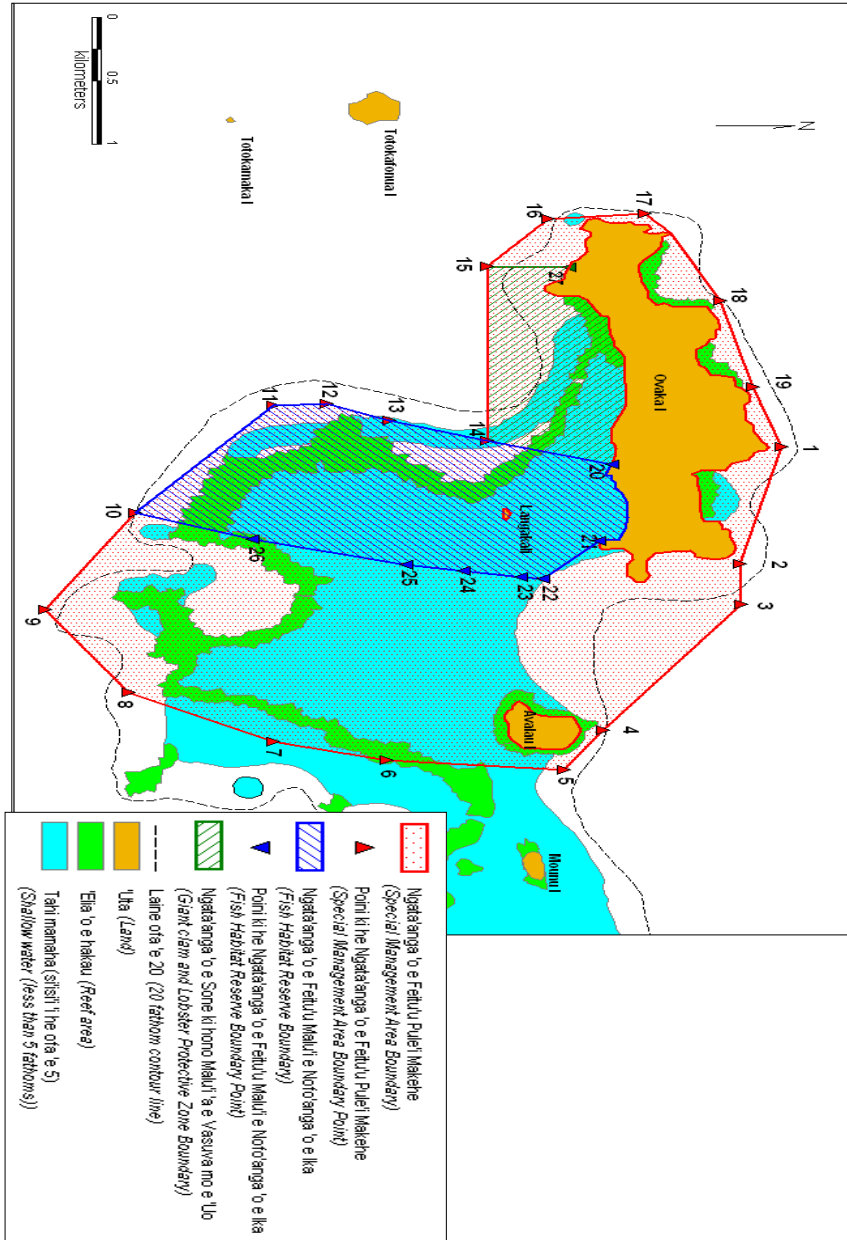
The areas inside the following straight boundary lines drawn between the Geographical Boundary Points with geographical coordinates outlined in Map 1 of Schedule 1, shall be a Fish Habitat Reserve:

Point	Latitude	Longitude
10	18° 46' 10.49" S	174° 05' 40.31" W
11	18° 45' 46.58" S	174° 06' 09.29" W
12	18° 45' 37.37" S	174° 06' 09.65" W
13	18° 45' 26.64" S	174° 06' 05.15" W
14	18° 45' 09.90" S	174° 05' 59.68" W
20	18° 44' 53.34" S	174° 05' 54.31" W
21	18° 44' 55.32" S	174° 05' 32.53" W
22	18° 45' 00.11" S	174° 05' 22.60" W
23	18° 45' 03.96" S	174° 05' 22.89" W
24	18° 45' 13.97" S	174° 05' 24.69" W
25	18° 45' 23.76" S	174° 05' 26.20" W
26	18° 45' 50.26" S	174° 05' 33.29" W

The areas inside the following straight boundary lines drawn between the Geographical Boundary Points with geographical coordinates outlined in Map 1 of Schedule 1, shall be a Giant Clam and Lobster Protective Zone:

Point	Latitude	Longitude
14	18° 45' 09.90" S	174° 05' 59.68" W
15	18° 45' 09.86" S	174° 06' 46.55" W
20	18° 44' 54.34" S	174° 05' 54.31" W
27	18° 45' 09.91" S	174° 06' 46.33" W

MAP 1 – ‘Ovaka Special Management Area



Special Management Area of Felemea (Ha'apai)

The areas inside the following straight boundary lines drawn between the Geographical Boundary Points with geographical coordinates outlined in Map 2 of Schedule 1, shall be a Special Management Area for purpose of coastal community management:

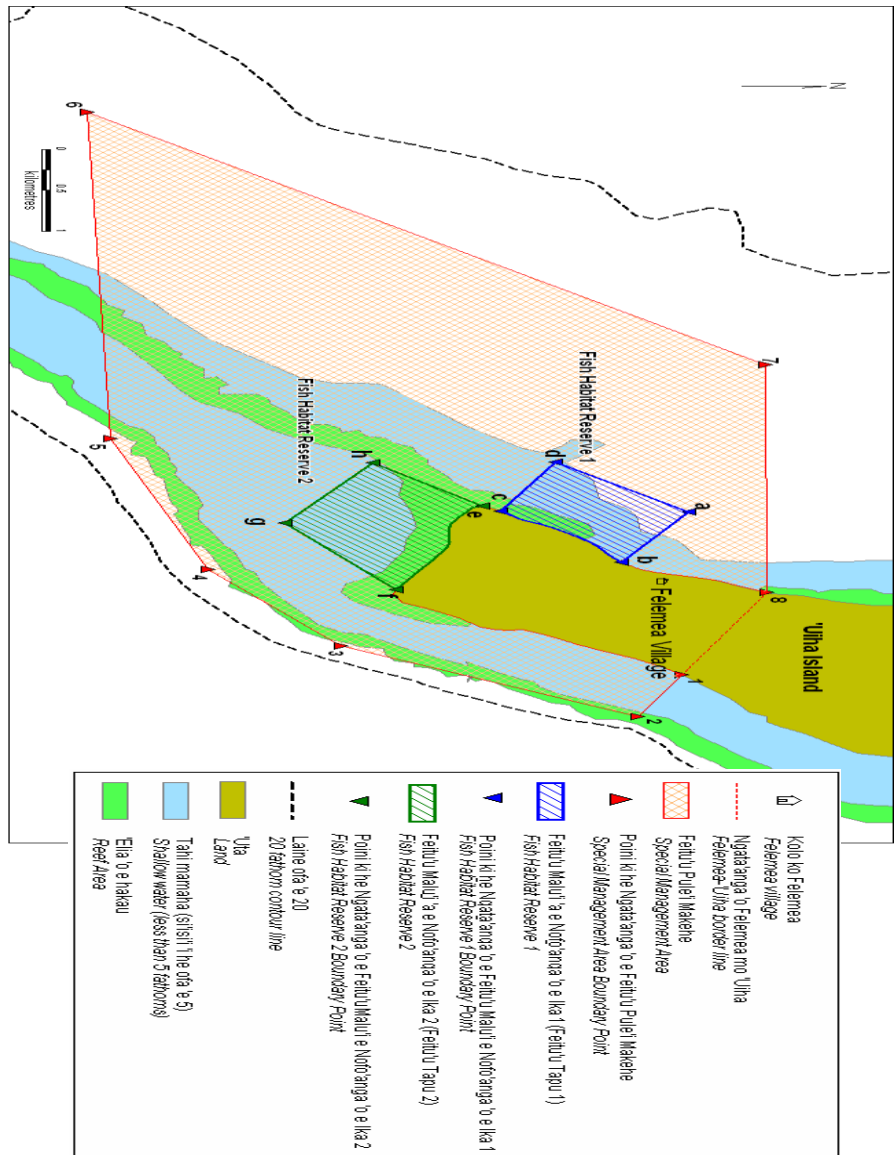
Point	Latitude	Longitude
1	19° 54' 28.91" S	174° 24' 03.24" W
2	19° 54' 37.26" S	174° 23' 45.92" W
3	19° 55' 32.88" S	174° 24' 15.48" W
4	19° 55' 57.94" S	174° 24' 48.99" W
5	19° 56' 16.30" S	174° 25' 42.42" W
6	19° 56' 20.69" S	174° 27' 59.58" W
7	19° 54' 13.18" S	174° 26' 13.52" W
8	19° 54' 12.89" S	174° 24' 38.05" W

The areas inside the following straight boundary lines drawn between the Geographical Boundary Points with geographical coordinates outlined in Map 2 of Schedule 1, shall be Fish Habitat Reserves:

Zone	Point	Latitude	Longitude
Fish Habitat Reserve 1	a	19° 54' 27.54" S	174° 25' 11.82" W
	b	19° 54' 39.35" S	174° 24' 52.42" W
	c	19° 55' 01.67" S	174° 25' 14.66" W
	d	19° 54' 52.74" S	174° 25' 32.63" W
Fish Habitat Reserve 2	e	19° 55' 06.31" S	174° 25' 14.16" W
	f	19° 55' 22.62" S	174° 24' 38.95" W

	g	19° 55' 43.50" S	174° 25' 07.07" W
	h	19° 55' 27.01" S	174° 25' 32.27" W

MAP 2 - Felemea Special Management Area



Special Management Area of ‘Atata (Tongatapu)

The areas inside the following straight boundary lines drawn between the Geographical Boundary Points with geographical coordinates outlined in Map 3 of Schedule 1, shall be a Special Management Area for purpose of coastal community management:

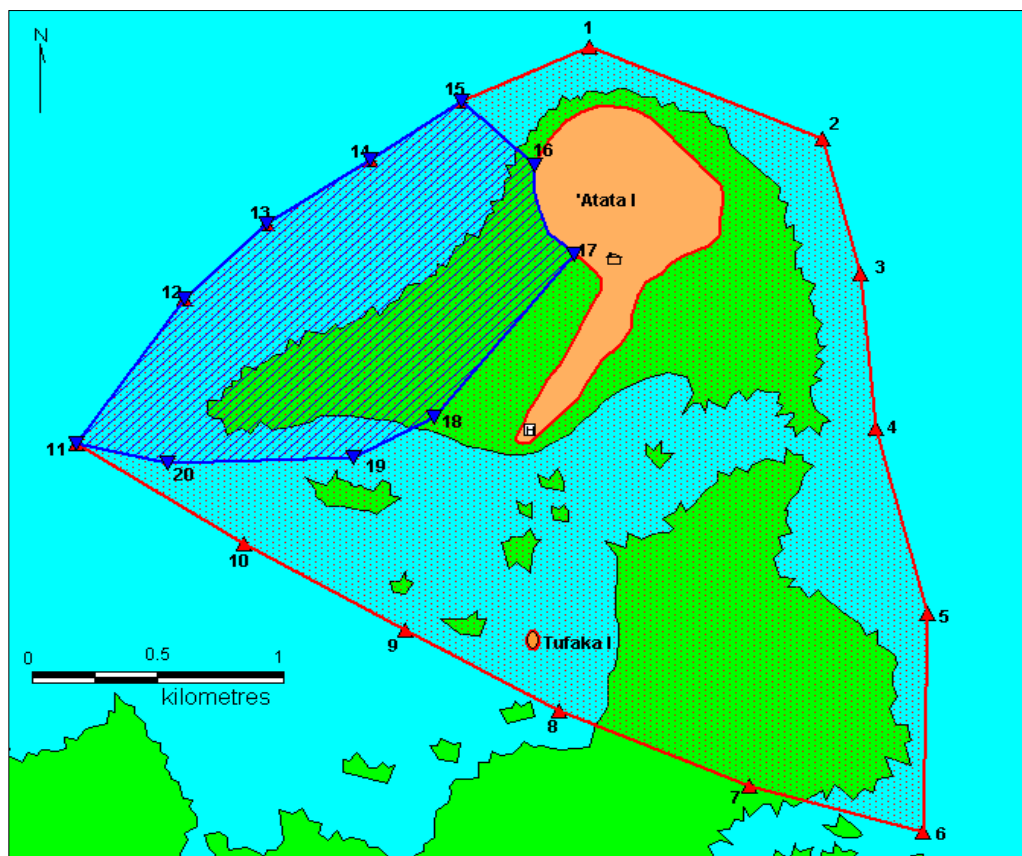
Point	Latitude	Longitude
1	21° 02' 23.75" S	175° 15' 17.75" W
2	21° 02' 37.50" S	175° 14' 45.67" W
3	21° 02' 57.98" S	175° 14' 40.34" W
4	21° 03' 21.47" S	175° 14' 38.27" W
5	21° 03' 49.37" S	175° 14' 31.20" W
6	21° 04' 22.44" S	175° 14' 31.80" W
7	21° 04' 15.42" S	175° 14' 55.80" W
8	21° 04' 04.04" S	175° 15' 22.20" W
9	21° 03' 51.84" S	175° 15' 43.20" W
10	21° 03' 38.77" S	175° 16' 05.40" W
11	21° 03' 23.72" S	175° 16' 28.80" W
12	21° 03' 01.87" S	175° 16' 13.80" W
13	21° 02' 50.50" S	175° 16' 02.40" W
14	21° 02' 40.68" S	175° 15' 48.00" W
15	21° 02' 31.92" S	175° 15' 35.40" W

The areas inside the following straight boundary lines drawn between the Geographical Boundary Points with geographical coordinates outlined in Map 3 of Schedule 1, shall be a Fish Habitat Reserve:

Fisheries (Coastal Communities)
(Amendment) Regulations 2016

Point	Latitude	Longitude
11	21° 03' 23.72" S	175° 16' 28.78" W
12	21° 03' 01.87" S	175° 16' 13.73" W
13	21° 02' 50.50" S	175° 16' 02.50" W
14	21° 02' 40.67" S	175° 15' 48.17" W
15	21° 02' 31.92" S	175° 15' 35.42" W
16	21° 02' 40.74" S	175° 15' 26.53" W
17	21° 02' 56.90" S	175° 15' 21.13" W
18	21° 03' 19.76" S	175° 15' 39.20" W
19	21° 03' 25.74" S	175° 15' 50.35" W
20	21° 03' 26.53" S	175° 16' 16.07" W

MAP 3: 'Atata Special Management Area



	Kolo (Village)
	Resort
	Ngata'anga 'o e Feitu'u Pule'i Makehe (Special Management Area Boundary)
	Poini Ngata'anga 'o e Feitu'u Pule'i Makehe (Special Management Area Boundary Point)
	Ngata'anga 'o e Feitu'u Malu'i e Nofu'anga 'o e Ika (Fish Habitat Reserve Boundary)
	Poini Ngata'anga 'o e Feitu'u Malu'i e Nofu'anga 'o e Ika (Fish Habitat Reserve Boundary Point)
	'Uta (Land)
	'Elia 'o e hakau (Reef area)
	Tahi mamaha (Shallow water)

Special Management Area of Ha'afeva (Ha'apai)

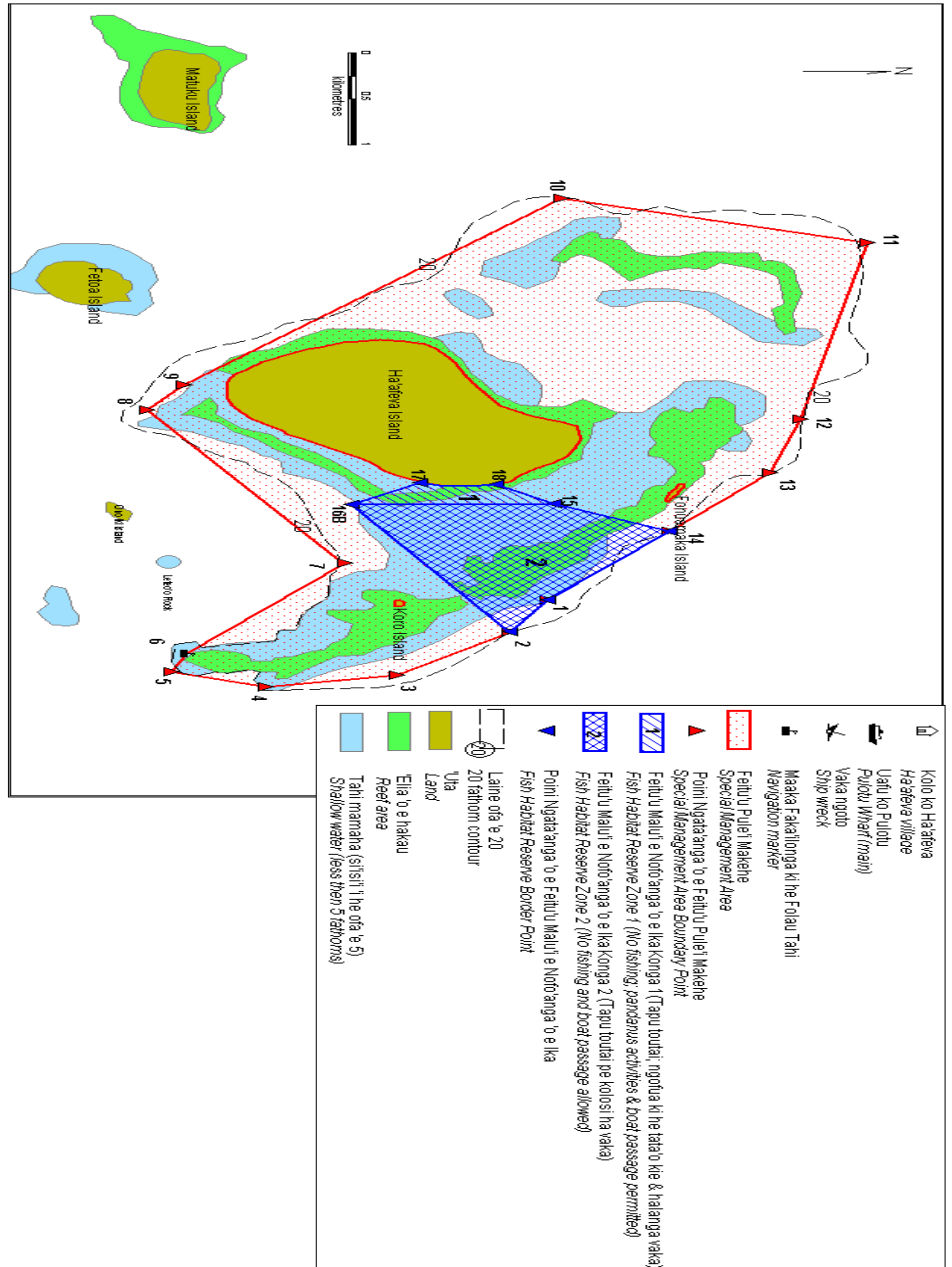
The areas inside the following straight boundary lines drawn between the Geographical Boundary Points with geographical coordinates outlined in Map 4 of Schedule 1, shall be a Special Management Area for purpose of coastal community management:

Point	Latitude	Longitude
1	19° 56' 24.65" S	174° 41' 30.95" W
2	19° 56' 32.42" S	174° 41' 18.35" W
3	19° 56' 54.20" S	174° 41' 02.58" W
4	19° 57' 19.69" S	174° 40' 58.04" W
5	19° 57' 38.16" S	174° 41' 03.84" W
6	19° 57' 34.92" S	174° 41' 10.82" W
7	19° 57' 04.07" S	174° 41' 44.77" W
8	19° 57' 42.55" S	174° 42' 42.41" W
9	19° 57' 35.71" S	174° 42' 51.62" W
10	19° 56' 22.27" S	174° 44' 02.00" W
11	19° 55' 22.69" S	174° 43' 45.19" W
12	19° 55' 35.72" S	174° 42' 38.77" W
13	19° 55' 41.59" S	174° 42' 18.64" W
14	19° 56' 01.39" S	174° 41' 56.47" W

The areas inside the following straight boundary lines drawn between the Geographical Boundary Points with geographical coordinates outlined in Map 4 of Schedule 1 shall be a Fish Habitat Reserve:

Zone	Point	Latitude	Longitude
1	15	19° 56' 23.57" S	174° 42' 06.80" W
	16B	19° 57' 02.56" S	174° 42' 06.62" W
	17	19° 56' 49.56" S	174° 42' 14.76" W
	18	19° 56' 34.87" S	174° 42' 14.26" W
2	14	19° 56' 01.39" S	174° 41' 56.47" W
	1	19° 56' 24.65" S	174° 41' 30.95" W
	2	19° 56' 32.42" S	174° 41' 18.35" W
	16B	19° 57' 02.56" S	174° 42' 06.62" W
	15	19° 56' 23.57" S	174° 42' 06.80" W

MAP 4 - Ha'afeva Special Management Area



Special Management Area of ‘Eueiki (Tongatapu)

The areas inside the following straight boundary lines drawn between the Geographical Boundary Points with geographical coordinates outlined in Map 5 of Schedule 1, shall be a Special Management Area for purpose of coastal community management:

Point	Latitude	Longitude
1	21° 07' 05.27" S	174° 59' 17.81" W
2	21° 07' 23.99" S	174° 59' 09.20" W
3	21° 07' 30.11" S	174° 59' 04.13" W
4	21° 07' 35.58" S	174° 58' 58.37" W
5	21° 07' 41.98" S	174° 58' 52.24" W
6	21° 08' 01.27" S	174° 58' 42.16" W
7	21° 08' 07.26" S	174° 58' 27.55" W
8	21° 08' 00.20" S	174° 58' 15.13" W
9	21° 07' 49.62" S	174° 58' 10.92" W
10	21° 07' 31.91" S	174° 58' 29.35" W
11	21° 07' 11.78" S	174° 58' 25.36" W
12	21° 06' 43.31" S	174° 58' 23.88" W
13	21° 06' 32.18" S	174° 58' 43.93" W
14	21° 06' 39.78" S	174° 59' 10.07" W
15	21° 06' 54.58" S	174° 59' 19.14" W

The areas inside the following straight boundary lines drawn between the Geographical Boundary Points with geographical coordinates outlined in Map 5 of Schedule 1, shall be a Fish Habitat Reserve:

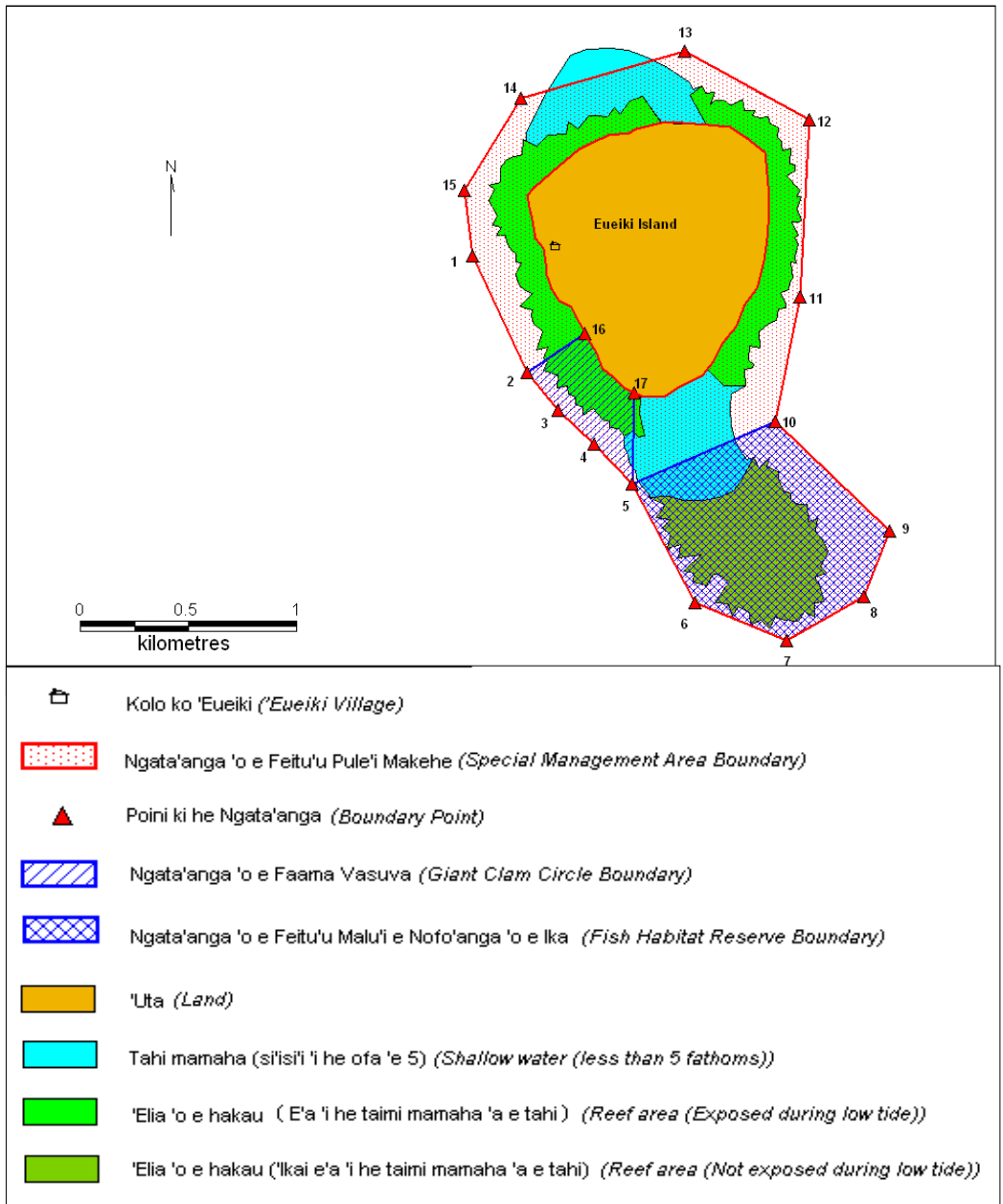
Fish Habitat Reserve 1

Point	Latitude	Longitude
5	21° 07' 41.98" S	174° 58' 52.24" W
6	21° 08' 01.27" S	174° 58' 42.16" W
7	21° 08' 07.26" S	174° 58' 27.55" W
8	21° 08' 00.20" S	174° 58' 15.13" W
9	21° 07' 49.62" S	174° 58' 10.92" W
10	21° 07' 31.91" S	174° 58' 29.35" W

Fish Habitat Reserve 2 (Giant Clam Circle)

Point	Latitude	Longitude
2	21° 07' 23.99" S	174° 59' 09.20" W
3	21° 07' 30.11" S	174° 59' 04.19" W
4	21° 07' 35.58" S	174° 58' 58.37" W
5	21° 07' 41.98" S	174° 58' 52.24" W
16	21° 07' 16.25" S	174° 58' 59.38" W
17	21° 07' 26.87" S	174° 58' 51.67" W

MAP 5 - 'Eueiki Special Management Area



Special Management Area for ‘O’ua

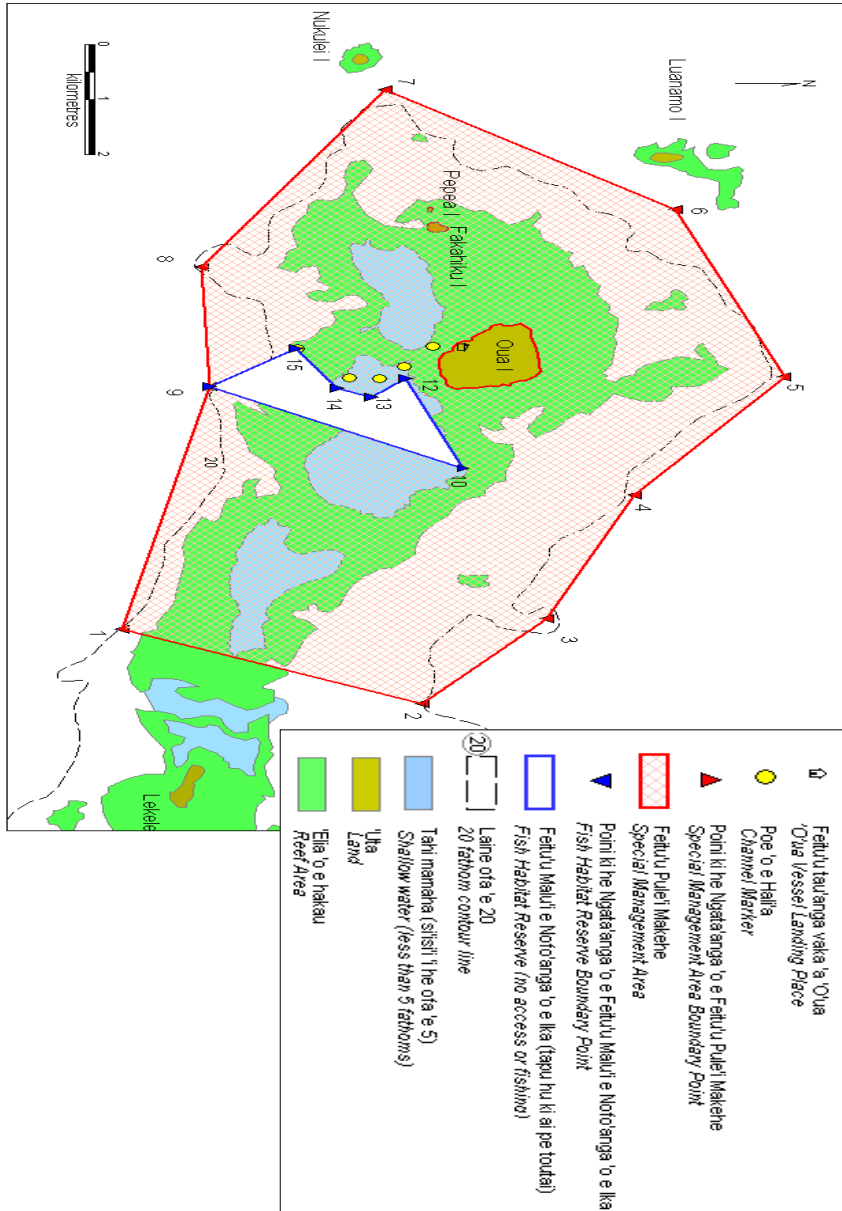
The areas inside the following straight boundary lines drawn between the Geographical Boundary Points with geographical coordinates outlined in Map 6 of Schedule 1, shall be a Special Management Area for purpose of coastal community management:

Point	Latitude	Longitude
1	20° 04' 27.48" S	174° 38' 02.40" W
2	20° 04' 42.72" S	174° 37' 15.60" W
3	20° 01' 59.20" S	174° 38' 09.20" W
4	20° 01' 28.92" S	174° 39' 26.89" W
5	20° 00' 36.48" S	174° 40' 41.12" W
6	20° 01' 14.05" S	174° 42' 28.15" W
7	20° 02' 55.64" S	174° 43' 41.23" W
8	20° 03' 59.69" S	174° 41' 50.06" W
9	20° 03' 56.74" S	174° 40' 34.75" W

The areas inside the following straight boundary lines drawn between the Geographical Boundary Points with geographical coordinates outlined in Map 6 of Schedule 1, shall be a Fish Habitat Reserve:

Point	Latitude	Longitude
9	20° 03' 56.74" S	174° 40' 34.75" W
10	20° 02' 28.46" S	174° 39' 43.31" W
12	20° 02' 48.80" S	174° 40' 40.01" W
13	20° 03' 00.32" S	174° 40' 28.42" W
14	20° 03' 12.49" S	174° 40' 33.71" W
15	20° 03' 26.46" S	174° 40' 58.84" W

MAP 6 - 'O'ua Special Management Area



Special Management Area of Nomuka

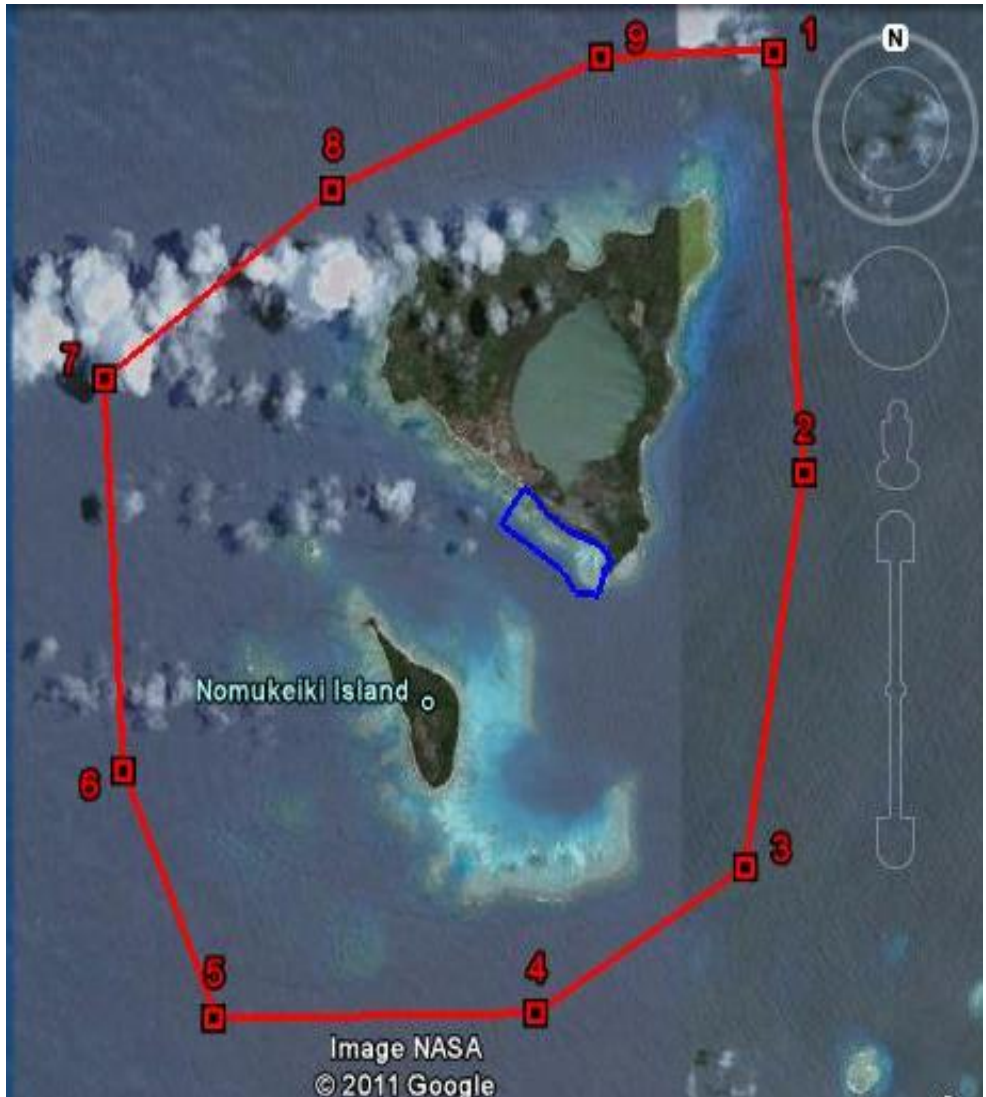
The areas inside the following straight boundary lines drawn between the Geographical Boundary Points with geographical coordinates outlined in Map 7 of Schedule 1, shall be a Special Management Area for the purpose of coastal community management:

Point	Latitude	Longitude
1	20° 13' 30.30" S	174° 46' 00.40" W
2	20° 15' 43.91" S	174° 45' 48.35" W
3	20° 17' 49.36" S	174° 46' 01.70" W
4	20° 18' 35.67" S	174° 47' 34.83" W
5	20° 18' 37.31" S	174° 49' 42.48" W
6	20° 17' 18.65" S	174° 50' 18.24" W
7	20° 15' 13.94" S	174° 50' 25.56" W
8	20° 14' 14.08" S	174° 48' 55.40" W
9	20° 13' 31.67" S	174° 47' 09.01" W

The areas inside the following straight boundary lines drawn between the Geographical Boundary Points with geographical coordinates outlined in Map 7 and Map 8 of Schedule 1 shall be a Fish Habitat Reserve:

Point	Latitude	Longitude
10	20° 16' 16.31" S	174° 47' 08.19" W
11	20° 16' 23.54" S	174° 47' 10.52" W
12	20° 16' 22.54" S	174° 47' 19.77" W
13	20° 16' 15.83" S	174° 47' 24.27" W
14	20° 16' 00.90" S	174° 47' 48.92" W
15	20° 15' 49.57" S	174° 47' 40.08" W
16	20° 16' 04.08" S	174° 47' 20.39" W

MAP 7 - Nomuka Coastal Community Special Management Area



MAP 8 - Nomuka Coastal Community Fish Habitat Reserve



Special Management Area of Nomuka (Tonumea and Kelelesia)

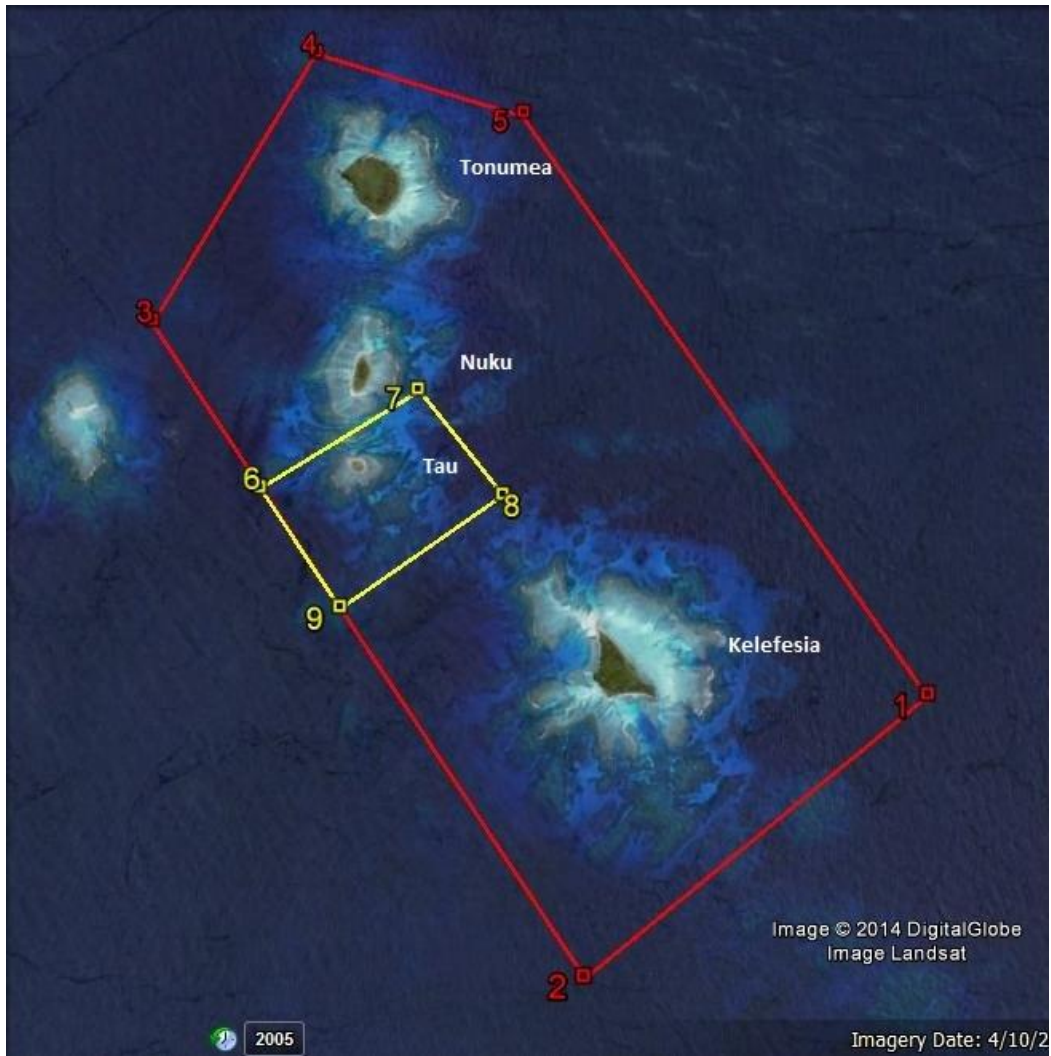
The areas inside the following straight boundary lines drawn between the Geographical Boundary Points with geographical coordinates outlined in Map 9 of Schedule 1, shall be a Special Management Area for the purpose of coastal community management:

Point	Latitude	Longitude
1	20° 30' 19.37" S	174° 42' 31.60" W
2	20° 31' 38.64" S	174° 44' 14.50" W
3	20° 28' 22.57" S	174° 46' 48.40" W
4	20° 26' 49.03" S	174° 46' 03.30" W
5	20° 27' 10.79" S	174° 44' 49.90" W

The areas inside the following straight boundary lines drawn between the Geographical Boundary Points with geographical coordinates outlined in Map 9 of Schedule 1, shall be a Fish Habitat Reserve:

Point	Latitude	Longitude
6	20° 29' 15.20" S	174° 46' 04.11" W
7	20° 28' 45.30" S	174° 45' 18.30" W
8	20° 29' 18.90" S	174° 44' 48.22" W
9	20° 29' 52.40" S	174° 45' 35.64" W

MAP 9 - Nomuka (Tonumea and Kelefesia) Special Management Area



Special Management Area of Taunga (Vava'u)

The areas inside the following straight boundary lines drawn between the Geographical Boundary Points with geographical coordinates outlined in Map 10 of Schedule 1, shall be a Special Management Area for the purpose of coastal community management:

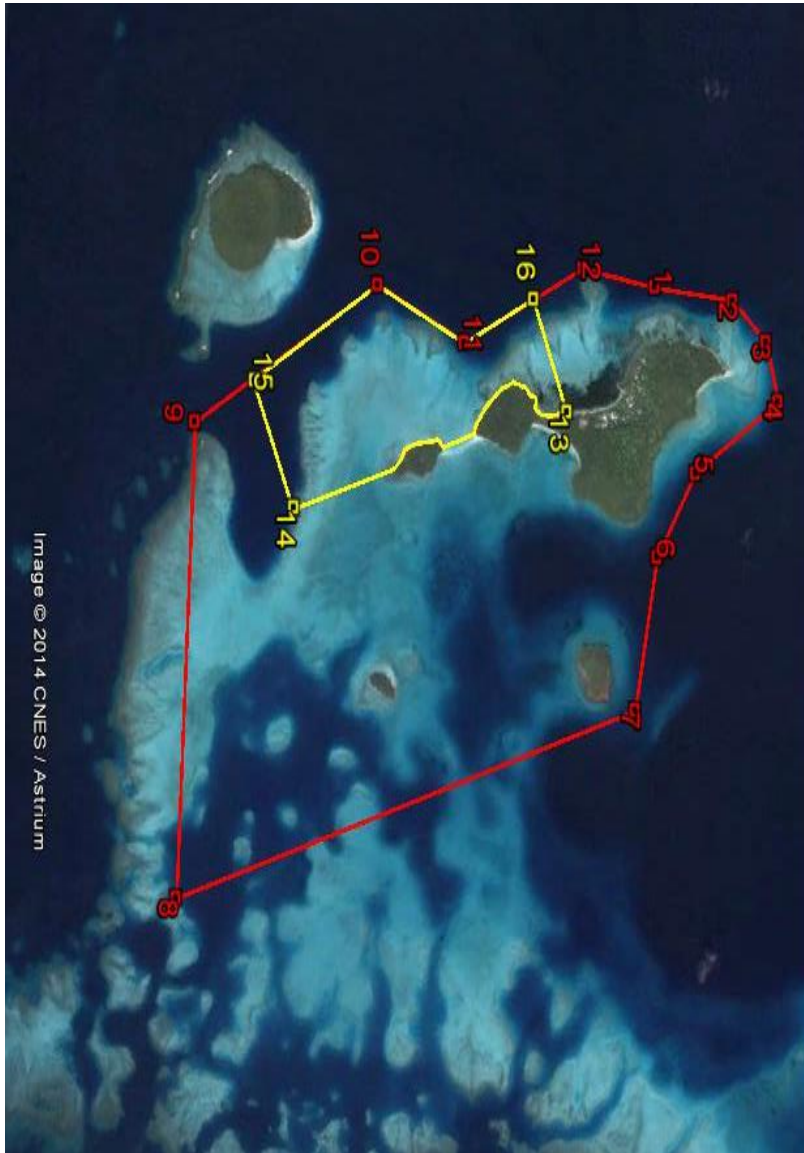
Point	Latitude	Longitude
1	18° 44' 34.40" S	174° 01' 04.50" W
2	18° 44' 17.10" S	174° 01' 03.90" W
3	18° 44' 09.20" S	174° 00' 57.80" W
4	18° 44' 05.80" S	174° 00' 48.20" W
5	18° 44' 23.10" S	174° 00' 34.70" W
6	18° 44' 30.50" S	174° 00' 20.10" W
7	18° 44' 33.40" S	173° 59' 54.60" W
8	18° 46' 10.20" S	173° 59' 15.80" W
9	18° 46' 12.10" S	174° 00' 33.10" W
10	18° 45' 34.69" S	174° 00' 59.01" W
11	18° 45' 15.30" S	174° 00' 51.40" W
12	18° 44' 50.40" S	174° 01' 06.00" W

The areas inside the following straight boundary lines drawn between the Geographical Boundary Points with geographical coordinates outlined in Map 10 of Schedule 1 shall be a Fish Habitat Reserve:

Point	Latitude	Longitude
10	18° 45' 34.69" S	174° 00' 59.01" W
11	18° 45' 15.30" S	174° 00' 51.40" W
13	18° 44' 52.14" S	174° 00' 42.10" W
14	18° 45' 49.93" S	174° 00' 21.17" W

15	18° 45' 59.90" S	174° 00' 41.00" W
16	18° 45' 00.05" S	174° 00' 58.37" W

MAP 10 - Taunga Special Management Area



Special Management Area of Kotu (Ha'apai)

The areas inside the following straight boundary lines drawn between the Geographical Boundary Points with geographical coordinates outlined in Map 11 of Schedule 1, shall be a Special Management Area for the purpose of coastal community management:

Point	Latitude	Longitude
1	19°57'54.20"S	174°46'12.60"W
2	19°56'58.32"S	174°46'10.85"W
3	19°56'25.64"S	174°46'11.61"W
4	19°55'40.52"S	174°46'9.83"W
5	19°55'13.20"S	174°46'10.70"W
6	19°55'37.00"S	174°46'54.60"W
7	19°56'5.60"S	174°48'8.40"W
8	19°56'26.62"S	174°48'25.53"W
9	19°57'12.15"S	174°48'26.31"W
10	19°57'41.89"S	174°48'2.75"W
11	19°58'8.20"S	174°47'30.60"W
12	19°58'3.08"S	174°46'49.58"W

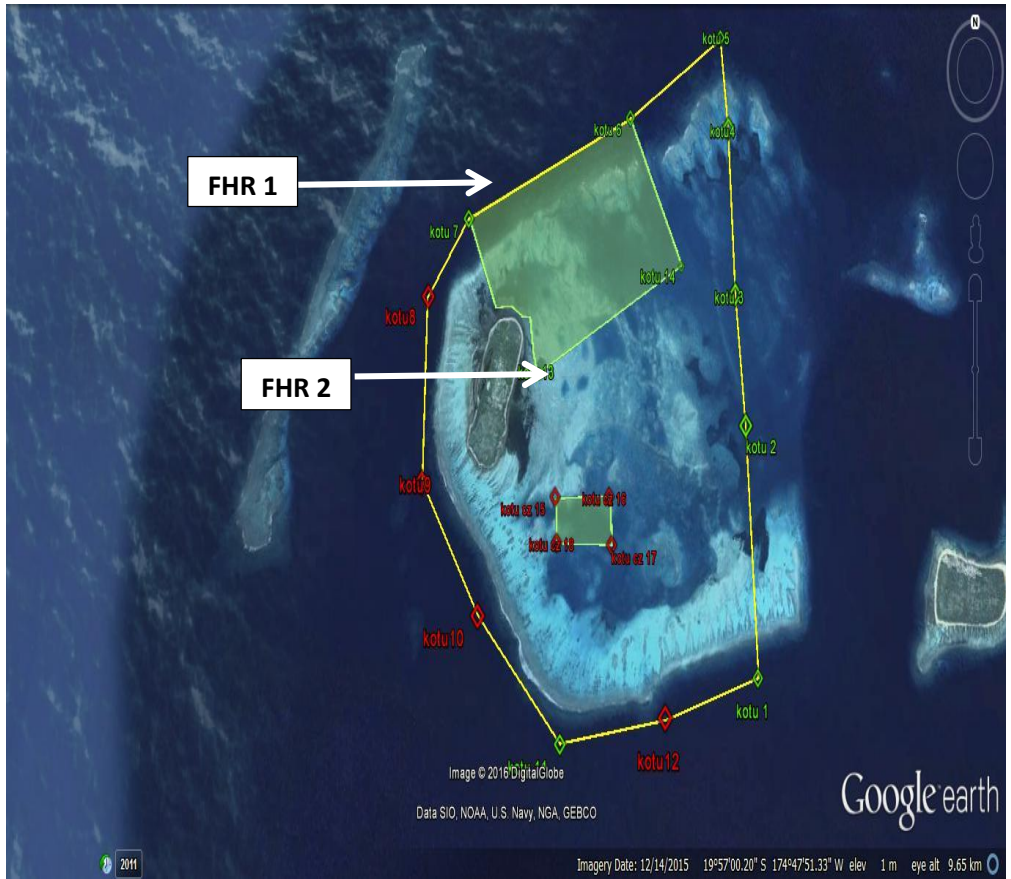
The areas inside the following straight boundary lines drawn between the Geographical Boundary Points with geographical coordinates outlined in Map 11 of Schedule 1 shall be Fish Habitat Reserves:

Fish Habitat Reserve 1		
Point	Latitude	Longitude
6	19°55'37.00"S	174°46'54.60"W
7	19°56'5.60"S	174°48'8.40"W

13	19°56'44.80"S	174°47'37.50"W
14	19°56'17.20"S	174°46'34.50"W

Fish Habitat Reserve 2		
Point	Latitude	Longitude
15	19°57'14.70"S	174°47'31.30"W
16	19°57'14.66"S	174°47'9.08"W
17	19°57'25.60"S	174°47'8.60"W
18	19°57'25.20"S	174°47'30.92"W

Map 11 - Kotu Special Management Area



Special Management Area of Kolonga (Tongatapu)

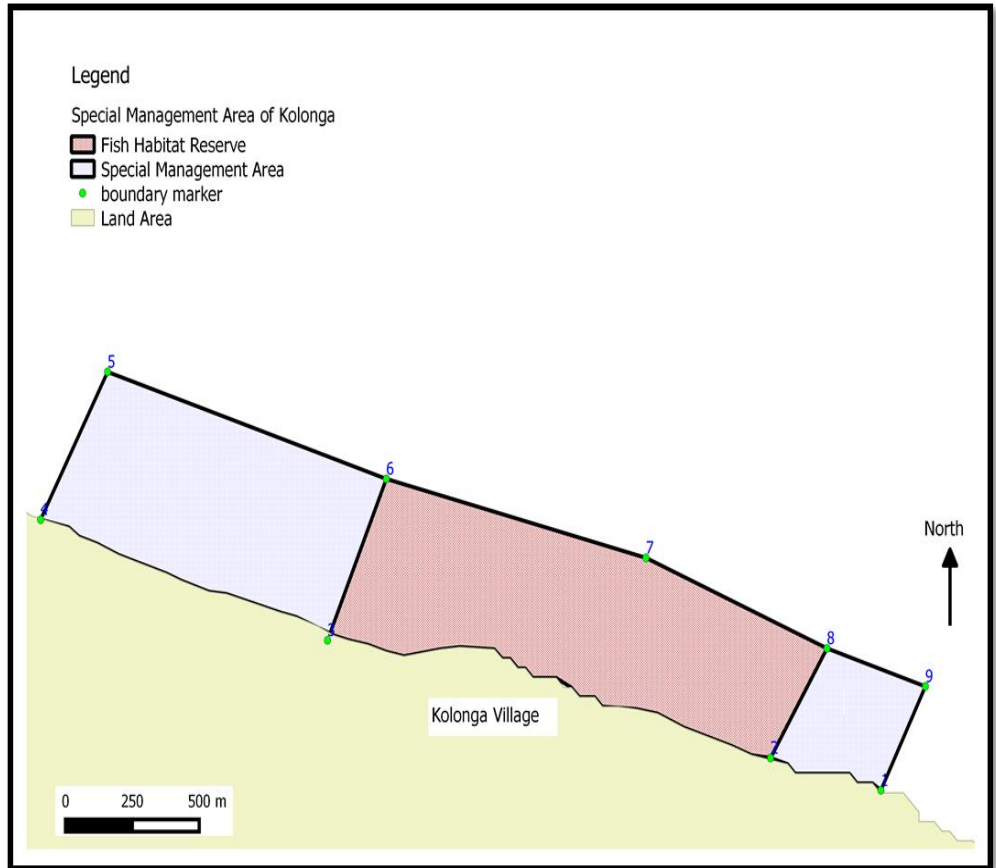
The areas inside the following straight boundary lines drawn between the Geographical Boundary Points with geographical coordinates outlined in Map 12 of Schedule 1, shall be a Special Management Area for the purpose of coastal community management:

Point	Latitude	Longitude
1	21° 7'44.16"S	175° 3'33.13"W
2	21° 7'41.10"S	175° 3'46.64"W
3	21° 7'27.06"S	175° 4'43.64"W
4	21° 7'14.46"S	175° 5'20.83"W
5	21° 6'57.34"S	175° 5'14.27"W
6	21° 7'10.20"S	175° 4'36.02"W
7	21° 7'18.45"S	175° 4'2.36"W
8	21° 7'27.90"S	175° 3'38.90"W
9	21° 7'31.88"S	175° 3'26.15"W

The areas inside the following straight boundary lines drawn between the Geographical Boundary Points with geographical coordinates outlined in Map 12 of Schedule 1 shall be a Fish Habitat Reserve:

Point	Latitude	Longitude
2	21° 7'41.10"S	175° 3'46.64"W
3	21° 7'27.06"S	175° 4'43.64"W
6	21° 7'10.20"S	175° 4'36.02"W
7	21° 7'18.45"S	175° 4'2.36"W
8	21° 7'27.90"S	175° 3'38.90"W

Map 12 - Kolonga Special Management Area



”

Made at Nuku’alofa this 14th day of December 2016.

Hon. Semisi Fakahau
Minister for Agriculture, Food, Forests and Fisheries