

VENDIM
Nr. 468, datë 26.7.2018
PËR SHPALLJEN E EKOSISTEMIT
NATYROR KRASTË-VERJON “PEIZAZH
I MBROJTUR”

Në mbështetje të nenit 100 të Kushtetutës dhe të pikës 4, të nenit 12, të ligjit nr. 81/2017, “Për zonat e mbrojtura”, me propozimin e ministrit të Turizmit dhe Mjedisit, Këshilli i Ministrave

VENDOSI:

1. Shpalljen e ekosistemit natyror Krastë-Verjon “Peizazh i mbrojtur”, me një sipërfaqe prej 1469.239 (një mijë e katërqind e gjashtëdhjetë e nëntë pikë dyqind e tridhjetë e nëntë) ha, kategoria V, sipas hartës në shtojcën 1 dhe kufijve të paraqitur sipas tabelës së koordinatave në shtojcën 2, pjesë përbërëse e këtij vendimi.

2. Kjo zonë përfshin territoret urbane, trojet e përziera me tokë bujqësore dhe pyjore, shkurre dhe sipërfaqe ujore. Mbulesa e tokës brenda sipërfaqes së peizazhit të mbrojtur Krastë-Verjon jepet në tabelën 1, që i bashkëlidhet këtij vendimi.

3. Ministria e Turizmit dhe Mjedisit, në bashkëpunim me ministritë e tjera të linjës dhe me njësitë e qeverisjes vendore, me institucionet

kërkimore-shkencore, me përfaqësuesit e biznesit e të pronarëve privatë, organizata të shoqërisë civile, brenda 1 (një) viti nga hyrja në fuqi e këtij vendimi, të hartojnë planin e menaxhimit të peizazhit të mbrojtur, i cili miratohet nga ministri përgjegjës për zonat e mbrojtura mjedisore.

4. Administrata Rajonale e Zonave të Mbrojtura të Qarkut Durrës kryen funksionet e administratës së peizazhit të mbrojtur Krastë-Verjon.

5. Ngarkohen Ministria e Turizmit dhe Mjedisit, Agjencia Kombëtare e Zonave të Mbrojtura dhe njësitë përkatëse të qeverisjes vendore për zbatimin e këtij vendimi.

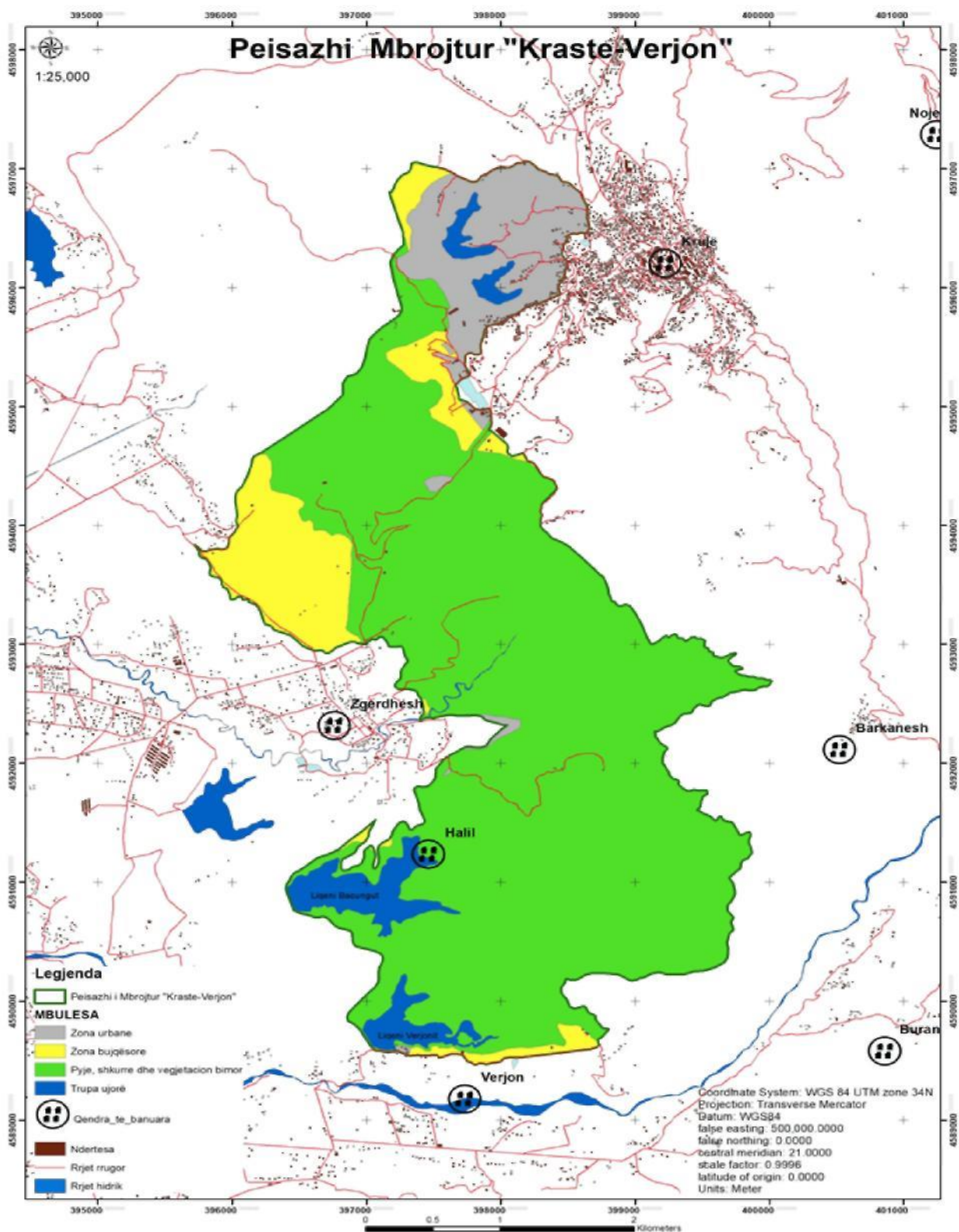
Ky vendim hyn në fuqi pas botimit në Fletoren Zyrtare.

KRYEMINISTRI
Edi Rama

TABELA 1
SIPËRFAQJA E PARKUT E PËRSHKRUAR
SIPAS
MBULESËS

Mbulesa	Sipërfaqja
Zona urbane	138.133
Zona bujqësore	155.869
Pyje, shkurre dhe vegjetacion	1100.087
Trupa ujorë	75.15
	1469.239

SHTOJCA 1
HARTA E ZONËS SË MBROJTUR KRASTË-VERJON



SHTOJCA 2
KOORDINATAT E PEIZAZHIT TË MBROJTUR KRASTË-VERJON

PIKA	X	Y		PIKA	X	Y
1	399042.903	4593184.991		51	399549.605	4592948.071
2	399090.516	4593059.375		52	399553.839	4592939.076
3	399093.106	4593053.815		53	399568.53	4592936.603
4	399108.95	4593019.809		54	399578.18	4592934.842
5	399117.284	4593006.315		55	399585.589	4592902.563
6	399128	4593001.553		56	399597.76	4592900.446
7	399141.891	4593006.315		57	399607.814	4592898.859
8	399164.512	4593019.809		58	399625.806	4592890.921
9	399181.578	4593032.906		59	399644.037	4592888.297
10	399195.072	4593048.384		60	399659.143	4592891.45
11	399209.323	4593060.229		61	399675.018	4592899.388
12	399225.631	4593073.784		62	399693.01	4592909.442
13	399235.553	4593074.578		63	399707.297	4592916.321
14	399240.316	4593072.196		64	399719.997	4592921.613
15	399244.284	4593066.64		65	399739.047	4592928.492
16	399251.825	4593061.481		66	399752.277	4592927.963
17	399256.588	4593063.068		67	399750.689	4592921.613
18	399265.716	4593073.784		68	399744.339	4592914.205
19	399276.431	4593080.134		69	399737.46	4592908.384
20	399289.131	4593084.897		70	399729.522	4592901.505
21	399301.831	4593084.897		71	399718.41	4592896.213
22	399308.181	4593082.515		72	399711.002	4592887.217
23	399313.738	4593072.99		73	399704.122	4592878.75
24	399315.325	4593063.465		74	399696.185	4592870.813
25	399319.294	4593055.925		75	399692.659	4592860.513
26	399330.407	4593050.368		76	399710.468	4592842.745
27	399342.71	4593050.765		77	399722.374	4592824.886
28	399357.791	4593049.971		78	399733.619	4592818.932
29	399361.584	4593043.65		79	399748.833	4592815.625
30	399366.125	4593036.081		80	399764.708	4592814.964
31	399374.063	4593030.128		81	399782.567	4592812.318
32	399391.922	4593036.081		82	399794.473	4592805.703
33	399415.352	4593058.572		83	399800.427	4592797.104
34	399420.806	4593060.996		84	399795.135	4592794.458
35	399439.856	4593064.7		85	399776.614	4592787.844

36	399449.91	4593063.642		86	399762.062	4592783.214
37	399455.731	4593054.117		87	399744.864	4592777.26
38	399461.023	4593050.412		88	399750.817	4592767.339
39	399469.489	4593048.296		89	399769.338	4592752.786
40	399484.835	4593050.412		90	399787.197	4592743.526
41	399492.244	4593050.412		91	399805.057	4592735.588
42	399494.889	4593049.883		92	399824.239	4592735.588
43	399502.827	4593044.592		93	399841.437	4592730.958
44	399511.294	4593037.712		94	399855.989	4592726.328
45	399517.644	4593030.304		95	399873.187	4592726.99
46	399518.173	4593018.133		96	399885.755	4592725.667
47	399517.105	4592999.439		97	399897.661	4592719.052
48	399516.056	4592981.091		98	399911.552	4592714.422
49	399525.581	4592975.8		99	399927.427	4592714.422
50	399542.869	4592967.075		100	399938.672	4592714.422
101	399949.916	4592713.76		151	399316.635	4592370.639
102	399965.13	4592711.114		152	399305.059	4592351.788
103	399972.406	4592703.177		153	399295.468	4592339.551
104	399984.312	4592699.208		154	399277.278	4592326.652
105	399999.526	4592700.531		155	399262.064	4592317.722
106	400011.432	4592697.224		156	399250.489	4592314.746
107	400016.062	4592691.932		157	399232.299	4592309.123
108	400010.109	4592680.026		158	399213.778	4592296.886
109	400000.187	4592658.859		159	399190.296	4592280.681
110	399985.635	4592649.599		160	399165.822	4592268.444
111	399973.067	4592648.937		161	399147.02	4592266.802
112	399959.838	4592648.937		162	399149.719	4592255.213
113	399950.578	4592646.291		163	399149.719	4592246.323
114	399926.104	4592638.354		164	399149.402	4592236.48
115	399914.198	4592632.401		165	399151.059	4592226.255
116	399896.338	4592620.495		166	399161.223	4592215.927
117	399870.541	4592613.218		167	399180.002	4592188.142
118	399848.713	4592611.896		168	399186.529	4592175.652
119	399820.27	4592618.51		169	399193.102	4592167.415
120	399797.119	4592616.526		170	399216.709	4592149.728
121	399764.708	4592606.604		171	399232.03	4592139.349
122	399739.638	4592600.849		172	399237.745	4592135.221
123	399707.888	4592592.912		173	399239.65	4592129.983

124	399671.508	4592567.776		174	399239.491	4592125.538
125	399652.326	4592555.87		175	399238.539	4592120.934
126	399629.175	4592551.24		176	399235.522	4592116.013
127	399599.409	4592537.349		177	399224.698	4592103.309
128	399585.518	4592531.396		178	399214.871	4592085.838
129	399574.935	4592524.781		179	399210.201	4592071.024
130	399567.659	4592513.536		180	399203.684	4592033.401
131	399563.69	4592496.339		181	399203.949	4592021.759
132	399555.091	4592482.448		182	399209.033	4591997.171
133	399542.523	4592477.818		183	399214.498	4591989.295
134	399530.617	4592479.802		184	399221.959	4591980.722
135	399514.742	4592485.094		185	399229.738	4591964.53
136	399499.529	4592489.724		186	399243.544	4591938.516
137	399486.299	4592495.016		187	399251.164	4591925.816
138	399478.362	4592494.354		188	399253.28	4591919.889
139	399465.794	4592487.74		189	399254.929	4591909.237
140	399454.549	4592477.156		190	399258.36	4591899.569
141	399443.966	4592467.234		191	399261.324	4591894.066
142	399434.044	4592452.682		192	399267.674	4591884.752
143	399426.768	4592437.469		193	399280.585	4591873.111
144	399413.539	4592426.885		194	399291.173	4591870.366
145	399390.057	4592417.603		195	399305.227	4591866.514
146	399373.19	4592417.272		196	399312.9	4591863.074
147	399362.937	4592414.957		197	399317.133	4591860.164
148	399348.054	4592409.004		198	399322.425	4591853.02
149	399337.802	4592399.082		199	399325.335	4591846.67
150	399327.88	4592387.506		200	399324.425	4591836.401
201	399323.483	4591825.768		251	399731.683	4591491.166
202	399324.806	4591821.534		252	399746.897	4591460.739
203	399327.187	4591816.243		253	399764.095	4591431.635
204	399342.87	4591800.631		254	399776.662	4591402.531
205	399352.557	4591790.988		255	399783.277	4591395.254
206	399358.541	4591787.569		256	399793.86	4591399.223
207	399380.104	4591773.38		257	399815.027	4591409.807
208	399391.746	4591768.088		258	399828.256	4591417.083
209	399401.271	4591767.824		259	399847.439	4591421.713
210	399408.679	4591769.147		260	399854.053	4591417.744
211	399419.939	4591772.58		261	399858.683	4591411.13

212	399430.375	4591775.761		262	399858.683	4591404.515
213	399434.344	4591776.291		263	399857.361	4591386.656
214	399441.488	4591776.291		264	399850.084	4591361.52
215	399470.063	4591771.257		265	399846.116	4591337.708
216	399470.761	4591771.257		266	399851.407	4591316.541
217	399511.772	4591773.902		267	399861.329	4591296.036
218	399535.584	4591772.58		268	399864.769	4591275.795
219	399539.553	4591756.704		269	399869.002	4591258.862
220	399536.907	4591743.475		270	399869.002	4591240.87
221	399523.678	4591732.892		271	399858.419	4591231.345
222	399512.756	4591725.331		272	399845.719	4591213.353
223	399504.557	4591717.14		273	399837.252	4591200.653
224	399500.556	4591696.32		274	399820.319	4591194.303
225	399497.579	4591690.698		275	399800.21	4591182.661
226	399491.391	4591680.065		276	399788.569	4591162.553
227	399490.605	4591662.777		277	399785.394	4591142.445
228	399487.998	4591636.688		278	399784.335	4591126.57
229	399462.251	4591606.189		279	399779.044	4591109.636
230	399479.006	4591598.323		280	399752.585	4591092.703
231	399500.834	4591583.109		281	399721.894	4591058.836
232	399537.214	4591565.911		282	399701.14	4591038
233	399559.704	4591555.328		283	399720.984	4591007.573
234	399574.256	4591540.776		284	399732.229	4590986.406
235	399582.193	4591528.869		285	399735.536	4590963.255
236	399594.1	4591516.963		286	399740.166	4590936.797
237	399602.699	4591518.286		287	399743.474	4590905.708
238	399609.313	4591522.255		288	399736.198	4590875.281
239	399615.266	4591531.515		289	399723.63	4590850.146
240	399622.542	4591545.406		290	399716.354	4590837.578
241	399630.48	4591554.005		291	399704.448	4590824.349
242	399644.371	4591553.343		292	399691.218	4590809.135
243	399645.693	4591549.375		293	399687.911	4590795.244
244	399648.339	4591536.807		294	399687.911	4590781.354
245	399651.647	4591529.531		295	399687.911	4590767.463
246	399657.6	4591525.562		296	399691.88	4590756.218
247	399662.891	4591516.302		297	399711.062	4590736.375
248	399670.829	4591516.302		298	399719.661	4590722.484
249	399703.24	4591509.026		299	399728.26	4590711.901

250	399723.084	4591503.734		300	399732.89	4590699.994
301	399728.922	4590692.718		351	398722.087	4590233.908
302	399718.338	4590677.505		352	398693.512	4590235.892
303	399717.015	4590660.968		353	398672.081	4590233.908
304	399723.63	4590637.156		354	398650.253	4590228.748
305	399728.922	4590619.958		355	398634.775	4590223.589
306	399730.906	4590598.791		356	398609.772	4590208.905
307	399717.753	4590585.254		357	398583.578	4590191.442
308	399702.89	4590569.958		358	398554.606	4590175.964
309	399682.781	4590492.699		359	398515.975	4590178.772
310	399685.956	4590471.532		360	398506.006	4590184.663
311	399692.306	4590448.249		361	398494.014	4590188.617
312	399690.19	4590424.966		362	398483.431	4590187.503
313	399689.131	4590392.157		363	398483.431	4590177.978
314	399688.073	4590365.699		364	398476.288	4590150.99
315	399665.786	4590325.88		365	398468.039	4590138.375
316	399639.328	4590310.005		366	398451.474	4590118.506
317	399596.994	4590285.663		367	398449.146	4590109.616
318	399545.136	4590265.555		368	398448.511	4590104.536
319	399501.744	4590254.972		369	398447.664	4590096.916
320	399473.169	4590252.855		370	398450.204	4590079.771
321	399436.127	4590249.68		371	398451.051	4590075.749
322	399393.072	4590233.784		372	398455.496	4590065.589
323	399357.353	4590226.244		373	398463.328	4590049.503
324	399320.328	4590227.361		374	398490.206	4590017.566
325	399284.99	4590225.847		375	398503.275	4589982.715
326	399263.294	4590224.788		376	398508.649	4589972.862
327	399244.773	4590224.788		377	398511.898	4589961.703
328	399227.839	4590227.963		378	398513.803	4589957.258
329	399204.556	4590238.018		379	398519.942	4589951.967
330	399188.681	4590240.663		380	398529.954	4589948.98
331	399168.044	4590240.663		381	398545.553	4589939.69
332	399150.052	4590238.547		382	398554.867	4589937.785
333	399131.002	4590233.784		383	398572.463	4589944.168
334	399113.539	4590228.493		384	398586.959	4589948.432
335	399098.723	4590218.438		385	398609.285	4589956.994
336	399078.085	4590207.326		386	398617.152	4589958.258
337	399051.097	4590197.272		387	398619.749	4589958.076

338	399032.577	4590192.509		388	398625.472	4589957.676
339	399012.997	4590181.926		389	398627.468	4589956.835
340	398999.239	4590176.105		390	398629.162	4589955.353
341	398985.481	4590173.459		391	398633.183	4589949.85
342	398978.072	4590172.401		392	398641.827	4589926.213
343	398970.135	4590173.459		393	398651.847	4589908.837
344	398956.906	4590178.751		394	398657.986	4589902.516
345	398944.735	4590185.63		395	398698.167	4589883.575
346	398922.51	4590198.859		396	398705.241	4589875.558
347	398899.755	4590212.618		397	398703.918	4589857.699
348	398874.885	4590223.73		398	398712.517	4589839.178
349	398851.601	4590227.963		399	398740.298	4589798.829
350	398785.191	4590234.305		400	398753.759	4589780.101
401	398758.033	4589776.772		451	398009.874	4589503.349
402	398763.672	4589774.782		452	398000.561	4589494.247
403	398771.236	4589773.267		453	397996.01	4589492.025
404	398787.559	4589771.712		454	397977.912	4589487.381
405	398795.323	4589769.871		455	397964.904	4589485.772
406	398798.419	4589768.687		456	397955.061	4589485.772
407	398800.346	4589766.964		457	397948.155	4589486.327
408	398800.874	4589764.84		458	397943.71	4589486.169
409	398800.913	4589762.676		459	397940.773	4589485.216
410	398799.736	4589758.501		460	397936.646	4589483.549
411	398799.101	4589756.596		461	397925.904	4589479.212
412	398796.561	4589751.833		462	397920.189	4589477.201
413	398789.258	4589742.15		463	397905.953	4589474.681
414	398752.205	4589698.287		464	397900.08	4589473.603
415	398744.203	4589691.549		465	397896.376	4589473.603
416	398739.676	4589688.1		466	397888.121	4589473.497
417	398731.433	4589683.206		467	397880.303	4589474.198
418	398728.047	4589680.348		468	397874.085	4589474.595
419	398726.565	4589677.914		469	397869.653	4589475.323
420	398725.189	4589674.739		470	397859.078	4589478.083
421	398723.496	4589669.765		471	397858.52	4589478.176
422	398723.616	4589664.338		472	397851.395	4589479.067
423	398723.769	4589657.481		473	397845.708	4589479.1
424	398725.692	4589649.517		474	397841.898	4589478.994
425	398733.323	4589633.98		475	397838.299	4589478.571

426	398728.759	4589627.096		476	397833.748	4589476.56
427	398720.554	4589619.673		477	397821.154	4589470.316
428	398713.472	4589613.623		478	397811.761	4589468.331
429	398706.064	4589609.072		479	397806.655	4589468.834
430	398698.126	4589605.156		480	397805.068	4589468.834
431	398687.12	4589601.558		481	397802.739	4589469.575
432	398668.173	4589597.185		482	397800.199	4589470.739
433	398660.452	4589595.403		483	397792.711	4589475.739
434	398566.566	4589583.954		484	397785.447	4589480.733
435	398480.629	4589570.989		485	397774.129	4589487.866
436	398335.637	4589551.939		486	397767.373	4589492.488
437	398207.579	4589537.123		487	397764.754	4589493.599
438	398189.931	4589534.97		488	397762.611	4589493.917
439	398165.049	4589530.425		489	397757.689	4589494.076
440	398154.731	4589529.366		490	397755.106	4589494.115
441	398118.354	4589528.775		491	397752.53	4589494.155
442	398116.562	4589528.656		492	397749.651	4589497.053
443	398080.616	4589530.038		493	397747.408	4589500.106
444	398066.841	4589529.022		494	397733.875	4589519.878
445	398057.395	4589527.99		495	397727.035	4589529.872
446	398044.879	4589526.232		496	397719.91	4589543.582
447	398039.52	4589524.77		497	397718.304	4589546.673
448	398028.183	4589519.859		498	397716.187	4589548.525
449	398023.526	4589516.896		499	397708.711	4589550.827
450	398018.764	4589512.98		500	397693.096	4589554.015
501	397653.645	4589559.129		551	397107.331	4589579.013
502	397650.993	4589559.319		552	397091.875	4589582.491
503	397647.303	4589559.583		553	397085.399	4589583.352
504	397643.186	4589559.647		554	397080.235	4589583.512
505	397637.87	4589559.214		555	397071.738	4589582.574
506	397635.037	4589558.711		556	397067.176	4589586.393
507	397631.448	4589557.731		557	397062.636	4589590.194
508	397629.151	4589556.799		558	397039.65	4589616.002
509	397611.571	4589549.795		559	397030.053	4589626.778
510	397595.762	4589542.916		560	397023.414	4589636.652
511	397561.366	4589531.274		561	397006.121	4589662.372
512	397541.258	4589525.85		562	396979.208	4589712.383
513	397538.479	4589526.247		563	396955	4589757.368

514	397535.22	4589534.722		564	396934.884	4589781.352
515	397532.526	4589541.725		565	396925.604	4589793.284
516	397529.748	4589544.9		566	396899.145	4589813.392
517	397525.912	4589548.207		567	396863.691	4589834.118
518	397520.62	4589549.53		568	396855.753	4589865.868
519	397517.71	4589549.927		569	396868.983	4589897.618
520	397506.333	4589549.266		570	396887.503	4589928.045
521	397495.59	4589547.75		571	396923.222	4589967.733
522	397476.011	4589545.59		572	396941.743	4589986.254
523	397451.881	4589544.108		573	396965.556	4590018.004
524	397427.09	4589543.897		574	396992.014	4590043.139
525	397395.174	4589546.91		575	397068.743	4590122.514
526	397386.529	4589547.627		576	397087.264	4590154.264
527	397372.321	4589547.151		577	397092.556	4590193.952
528	397360.467	4589546.278		578	397089.91	4590225.702
529	397333.233	4589542.092		579	397092.556	4590260.098
530	397329.157	4589541.886		580	397097.848	4590285.233
531	397320.796	4589541.463		581	397104.462	4590301.109
532	397314.234	4589543.156		582	397112.4	4590315.661
533	397307.143	4589546.648		583	397122.983	4590338.15
534	397281.135	4589557.258		584	397124.306	4590359.317
535	397261.132	4589565.275		585	397121.66	4590375.192
536	397251.925	4589570.355		586	397108.431	4590396.359
537	397241.94	4589579.987		587	397066.098	4590421.494
538	397240.988	4589580.558		588	396985.4	4590445.307
539	397237.042	4589582.01		589	396925.868	4590458.536
540	397235.828	4589582.287		590	396909.993	4590475.734
541	397229.878	4589583.119		591	396899.608	4590497.43
542	397226.62	4589583.205		592	396891.671	4590572.042
543	397220.663	4589582.975		593	396877.383	4590592.68
544	397213.08	4589582.167		594	396840.871	4590603.792
545	397202.278	4589580.235		595	396793.245	4590616.492
546	397185.954	4589575.267		596	396763.083	4590633.955
547	397174.916	4589573.128		597	396717.045	4590692.693
548	397167.511	4589572.205		598	396682.12	4590713.33
549	397156.447	4589571.895		599	396663.07	4590711.743
550	397138.618	4589574.454		600	396644.02	4590703.805
601	396617.033	4590703.805		651	397172.972	4591364.18

602	396570.995	4590724.443		652	397188.847	4591397.253
603	396509.082	4590738.73		653	397198.107	4591430.326
604	396458.084	4590763.998		654	397221.92	4591472.659
605	396399.346	4590944.973		655	397244.409	4591501.764
606	396404.109	4590978.311		656	397272.191	4591511.024
607	396427.921	4591016.411		657	397292.035	4591504.409
608	396439.034	4591048.161		658	397311.878	4591470.014
609	396464.434	4591079.911		659	397319.816	4591446.201
610	396500.946	4591097.374		660	397340.983	4591440.909
611	396537.459	4591127.536		661	397358.181	4591460.753
612	396593.022	4591171.986		662	397376.701	4591475.305
613	396637.472	4591205.324		663	397399.191	4591481.92
614	396721.609	4591238.661		664	397423.004	4591491.18
615	396788.814	4591271.47		665	397437.556	4591514.993
616	396898.51	4591374.499		666	397416.389	4591565.374
617	396962.01	4591425.299		667	397397.868	4591606.384
618	397067.844	4591522.666		668	397390.989	4591658.772
619	397021.277	4591425.299		669	397355.006	4591777.306
620	397012.81	4591382.965		670	397364.531	4591797.414
621	396991.644	4591342.749		671	397383.581	4591806.939
622	396938.727	4591298.299		672	397404.747	4591802.706
623	396915.444	4591249.615		673	397423.797	4591798.472
624	396870.993	4591222.098		674	397442.847	4591799.531
625	396820.193	4591194.582		675	397470.364	4591818.581
626	396811.727	4591160.715		676	397492.589	4591845.039
627	396811.727	4591116.265		677	397513.756	4591878.906
628	396826.543	4591097.215		678	397516.931	4591920.181
629	396866.76	4591105.682		679	397516.931	4591952.989
630	396896.394	4591128.965		680	397540.214	4591983.681
631	396934.494	4591139.548		681	397566.673	4592021.781
632	396966.244	4591160.715		682	397588.898	4592046.123
633	396981.06	4591207.282		683	397609.006	4592056.706
634	396985.294	4591266.549		684	397626.998	4592072.581
635	397010.253	4591295.388		685	397657.689	4592088.456
636	397032.742	4591308.617		686	397707.431	4592119.148
637	397043.326	4591303.326		687	397730.715	4592135.023
638	397053.909	4591279.513		688	397753.998	4592142.431
639	397063.17	4591243.794		689	397783.631	4592139.256

640	397068.461	4591219.982		690	397804.798	4592136.081
641	397052.586	4591157.805		691	397822.363	4592133.952
642	397047.295	4591120.763		692	397839.723	4592131.848
643	397064.492	4591115.471		693	397859.832	4592135.023
644	397076.399	4591130.023		694	397894.757	4592148.781
645	397089.628	4591165.742		695	397928.623	4592208.048
646	397092.274	4591204.107		696	398003.765	4592286.365
647	397083.013	4591275.544		697	398049.009	4592320.761
648	397092.274	4591305.972		698	398015.142	4592324.994
649	397116.086	4591328.461		699	397960.109	4592344.044
650	397145.191	4591346.982		700	397911.425	4592356.744
701	397879.675	4592368.386		751	397282.106	4592930.208
702	397865.917	4592389.553		752	397271.787	4592969.896
703	397843.692	4592400.136		753	397263.056	4592981.008
704	397804.534	4592405.428		754	397238.449	4592981.008
705	397753.733	4592399.078		755	397209.874	4592978.627
706	397727.275	4592401.194		756	397187.649	4592978.627
707	397695.525	4592401.194		757	397166.218	4592983.39
708	397666.95	4592402.253		758	397163.837	4592996.883
709	397628.85	4592408.603		759	397155.105	4593018.315
710	397604.508	4592405.428		760	397148.755	4593025.458
711	397559	4592396.961		761	397144.787	4593033.396
712	397516.481	4592387.833		762	397139.23	4593042.127
713	397500.606	4592379.234		763	397132.087	4593052.446
714	397484.731	4592383.864		764	397124.149	4593061.177
715	397464.226	4592385.187		765	397109.862	4593065.146
716	397444.382	4592384.526		766	397097.162	4593064.352
717	397401.387	4592360.713		767	397084.462	4593048.477
718	397396.757	4592371.296		768	397071.762	4593038.158
719	397406.017	4592399.078		769	397054.299	4593041.333
720	397424.538	4592414.953		770	397039.218	4593039.746
721	397428.507	4592426.859		771	397023.343	4593027.84
722	397424.538	4592457.948		772	397010.643	4593017.521
723	397422.554	4592473.161		773	396994.768	4593000.852
724	397415.939	4592501.604		774	396979.686	4593000.852
725	397405.666	4592546.773		775	396951.905	4593006.408
726	397392.966	4592565.03		776	396934.685	4593008.339
727	397383.441	4592582.492		777	396925.16	4593017.07

728	397378.679	4592597.573		778	396913.254	4593021.832
729	397370.741	4592610.273		779	396878.329	4593019.451
730	397341.372	4592620.592		780	396855.31	4593010.72
731	397315.972	4592624.561		781	396840.229	4593002.782
732	397293.747	4592626.942		782	396820.385	4592992.464
733	397272.316	4592626.942		783	396796.572	4592985.32
734	397260.41	4592621.386		784	396774.347	4592974.207
735	397248.504	4592621.386		785	396748.153	4592948.807
736	397231.041	4592633.292		786	396717.197	4592928.17
737	397214.372	4592645.992		787	396692.591	4592928.964
738	397209.61	4592661.073		788	396671.953	4592949.601
739	397223.897	4592683.299		789	396648.934	4592951.189
740	397248.504	4592704.73		790	396621.153	4592947.22
741	397255.647	4592722.986		791	396581.466	4592959.92
742	397256.441	4592741.242		792	396525.903	4592987.701
743	397254.324	4592768.283		793	396501.297	4593013.101
744	397265.437	4592792.889		794	396475.897	4593036.12
745	397273.374	4592808.764		795	396455.259	4593059.933
746	397279.724	4592819.083		796	396430.653	4593078.983
747	397291.631	4592834.958		797	396398.903	4593091.683
748	397301.95	4592851.627		798	396353.659	4593106.764
749	397305.125	4592871.471		799	396315.757	4593121.448
750	397289.249	4592899.252		800	396301.47	4593138.911
801	396287.182	4593155.58		851	395727.124	4593835.312
802	396264.163	4593165.898		852	395733.077	4593830.351
803	396244.32	4593172.248		853	395764.497	4593795.625
804	396234.795	4593195.267		854	395778.718	4593786.364
805	396227.651	4593223.049		855	395802.2	4593785.041
806	396220.507	4593246.067		856	395823.036	4593790.664
807	396212.57	4593271.467		857	395839.903	4593797.609
808	396204.632	4593293.692		858	395854.455	4593800.255
809	396193.52	4593310.361		859	395869.007	4593801.908
810	396178.438	4593330.999		860	395882.237	4593803.893
811	396164.944	4593340.524		861	395892.489	4593808.854
812	396145.894	4593348.461		862	395914.317	4593801.048
813	396125.257	4593356.399		863	395941.305	4593804.223
814	396119.701	4593377.036		864	395964.324	4593813.749
815	396108.588	4593383.386		865	395970.674	4593831.211

816	396095.888	4593375.449		866	395974.643	4593852.642
817	396078.426	4593377.036		867	395974.643	4593879.63
818	396073.663	4593396.086		868	395982.58	4593905.824
819	396062.55	4593403.23		869	396000.043	4593924.08
820	396043.5	4593399.261		870	396015.918	4593942.336
821	396026.832	4593387.355		871	396026.236	4593962.18
822	396004.607	4593378.624		872	396041.185	4593986.786
823	395991.113	4593377.83		873	396046.477	4594001.338
824	395984.763	4593398.468		874	396034.571	4594017.214
825	395982.382	4593418.311		875	396030.602	4594042.349
826	395971.269	4593445.299		876	396035.894	4594074.099
827	395964.919	4593456.411		877	396037.217	4594103.203
828	395955.394	4593472.287		878	396033.248	4594132.307
829	395934.756	4593481.018		879	396029.279	4594164.058
830	395922.189	4593510.982		880	396022.664	4594203.745
831	395920.601	4593532.413		881	396022.664	4594243.433
832	395911.076	4593553.051		882	396031.925	4594279.152
833	395896.789	4593564.163		883	396047.8	4594302.964
834	395885.676	4593568.926		884	396072.935	4594329.422
835	395867.42	4593568.926		885	396107.331	4594395.568
836	395851.545	4593574.482		886	396119.238	4594432.61
837	395836.464	4593587.976		887	396139.544	4594501.253
838	395834.082	4593607.82		888	396150.128	4594553.112
839	395840.432	4593628.457		889	396163.886	4594585.92
840	395843.607	4593650.682		890	396224.705	4594615.872
841	395830.114	4593680.051		891	396716.831	4594980.997
842	395815.826	4593704.657		892	396822.665	4595097.414
843	395806.301	4593717.357		893	396822.665	4595139.748
844	395783.282	4593728.47		894	396827.957	4595200.602
845	395763.438	4593736.407		895	396857.061	4595253.519
846	395757.882	4593753.87		896	396925.853	4595277.331
847	395756.295	4593770.539		897	396965.54	4595330.248
848	395752.326	4593787.207		898	396989.353	4595401.686
849	395730.432	4593819.437		899	397007.874	4595507.519
850	395719.848	4593833.989		900	397023.749	4595565.728
901	397058.145	4595610.707		951	397832.837	4596909.958
902	397129.582	4595676.853		952	397841.833	4596922.129
903	397190.437	4595724.478		953	397848.183	4596933.242

904	397240.708	4595766.811		954	397857.708	4596941.179
905	397261.874	4595803.853		955	397873.583	4596950.175
906	397261.874	4595840.895		956	397894.22	4596957.584
907	397233.917	4595950.433		957	397914.858	4596971.342
908	397202.166	4596073.464		958	397935.496	4596987.746
909	397178.354	4596212.371		959	397958.25	4596997.8
910	397202.166	4596275.871		960	397977.3	4597009.442
911	397229.948	4596311.59		961	397994.762	4597014.346
912	397277.573	4596363.183		962	398011.696	4597015.933
913	397273.604	4596418.746		963	398030.217	4597014.875
914	397269.635	4596474.309		964	398047.679	4597010.112
915	397237.885	4596569.559		965	398065.671	4597011.7
916	397170.848	4596802.974		966	398082.075	4597019.637
917	397181.961	4596801.916		967	398094.246	4597027.575
918	397188.311	4596807.207		968	398104.829	4597037.1
919	397195.719	4596821.495		969	398114.883	4597046.096
920	397203.657	4596840.016		970	398125.996	4597049.271
921	397211.594	4596865.416		971	398146.104	4597049.271
922	397224.294	4596889.228		972	398155.1	4597051.387
923	397238.582	4596913.57		973	398170.446	4597056.679
924	397253.398	4596932.091		974	398186.85	4597061.971
925	397263.982	4596946.908		975	398202.196	4597061.971
926	397282.503	4596955.374		976	398215.954	4597058.796
927	397301.553	4596966.487		977	398244.53	4597033.396
928	397315.84	4596976.012		978	398260.484	4597018.561
929	397323.778	4596989.77		979	398270.009	4597006.258
930	397330.128	4597004.058		980	398279.534	4596995.543
931	397333.832	4597023.637		981	398290.25	4596989.986
932	397333.964	4597040.531		982	398304.537	4596987.605
933	397350.501	4597052.437		983	398312.078	4596985.224
934	397371.667	4597052.437		984	398325.968	4596979.271
935	397388.204	4597050.453		985	398340.653	4596971.73
936	397417.97	4597038.546		986	398351.765	4596962.205
937	397502.636	4597016.718		987	398364.069	4596957.046
938	397527.11	4597014.072		988	398380.737	4596954.267
939	397576.72	4597000.843		989	398413.678	4596945.536
940	397612.439	4596982.984		990	398425.981	4596940.774
941	397632.282	4596971.077		991	398434.316	4596935.217

942	397648.157	4596961.288		992	398440.269	4596920.93
943	397662.974	4596948.588		993	398450.191	4596901.483
944	397678.849	4596940.121		994	398461.7	4596891.164
945	397726.474	4596919.484		995	398478.766	4596887.592
946	397759.812	4596902.55		996	398496.493	4596886.115
947	397780.449	4596892.496		997	398512.698	4596879.831
948	397796.324	4596890.908		998	398528.574	4596860.98
949	397810.612	4596893.554		999	398544.779	4596843.12
950	397823.312	4596900.433		1000	398578.183	4596812.032
1001	398590.42	4596801.779		1051	398439.303	4596033.957
1002	398597.035	4596794.172		1052	398434.673	4596014.774
1003	398611.256	4596751.839		1053	398430.042	4596002.207
1004	398628.123	4596719.758		1054	398426.735	4595992.285
1005	398638.839	4596697.533		1055	398429.381	4595982.363
1006	398645.189	4596679.012		1056	398440.626	4595961.196
1007	398644.131	4596664.195		1057	398444.595	4595955.904
1008	398641.485	4596655.199		1058	398443.933	4595947.305
1009	398644.66	4596641.441		1059	398437.319	4595940.691
1010	398645.718	4596626.624		1060	398424.751	4595934.738
1011	398642.543	4596601.224		1061	398414.829	4595930.107
1012	398642.543	4596587.466		1062	398402.923	4595924.154
1013	398652.597	4596555.716		1063	398371.437	4595908.693
1014	398657.889	4596515.499		1064	398334.131	4595888.849
1015	398657.36	4596496.449		1065	398315.478	4595880.911
1016	398648.364	4596476.341		1066	398300.793	4595874.561
1017	398643.601	4596460.466		1067	398283.728	4595865.433
1018	398626.668	4596457.82		1068	398262.296	4595863.052
1019	398615.648	4596459.937		1069	398238.087	4595858.289
1020	398595.011	4596464.17		1070	398221.021	4595852.733
1021	398582.84	4596458.878		1071	398203.956	4595844.002
1022	398569.61	4596452.528		1072	398178.556	4595826.936
1023	398554.794	4596455.174		1073	398166.252	4595816.221
1024	398543.681	4596456.232		1074	398155.14	4595806.299
1025	398521.985	4596450.941		1075	398142.837	4595798.361
1026	398500.29	4596439.299		1076	398129.343	4595790.027
1027	398495.527	4596435.066		1077	398115.452	4595779.311
1028	398492.352	4596416.545		1078	398100.371	4595767.405
1029	398496.056	4596398.553		1079	398087.658	4595761.39

1030	398493.41	4596382.678		1080	398073.436	4595758.744
1031	398478.594	4596374.211		1081	398062.853	4595752.791
1032	398471.185	4596361.511		1082	398053.593	4595744.523
1033	398468.539	4596349.87		1083	398041.025	4595730.301
1034	398465.894	4596326.586		1084	398031.764	4595721.041
1035	398461.66	4596312.299		1085	398018.535	4595711.781
1036	398455.839	4596294.836		1086	397989.1	4595697.89
1037	398459.544	4596274.199		1087	397961.65	4595693.26
1038	398470.656	4596253.561		1088	397937.506	4595688.299
1039	398480.181	4596238.745		1089	397917.332	4595681.023
1040	398490.235	4596228.426		1090	397904.103	4595673.085
1041	398494.866	4596222.473		1091	397890.543	4595662.171
1042	398497.511	4596209.243		1092	397883.928	4595651.588
1043	398494.866	4596177.493		1093	397880.29	4595637.697
1044	398484.944	4596153.681		1094	397877.314	4595626.122
1045	398477.668	4596130.53		1095	397873.345	4595613.885
1046	398477.006	4596113.993		1096	397873.014	4595600.325
1047	398473.699	4596092.827		1097	397871.36	4595584.119
1048	398466.423	4596081.582		1098	397863.092	4595562.952
1049	398459.147	4596074.306		1099	397853.819	4595537.248
1050	398449.886	4596061.738		1100	397850.432	4595523.913
1101	397848.104	4595514.811		1151	397932.241	4594877.64
1102	397847.892	4595506.133		1152	397931.447	4594853.828
1103	397849.585	4595494.279		1153	397924.304	4594831.603
1104	397851.49	4595481.579		1154	397916.366	4594814.14
1105	397852.972	4595471.208		1155	397913.985	4594805.409
1106	397853.607	4595462.318		1156	397921.922	4594796.678
1107	397853.819	4595455.756		1157	397935.416	4594793.503
1108	397849.797	4595448.348		1158	397994.948	4594733.971
1109	397843.024	4595440.939		1159	398047.335	4594682.377
1110	397834.557	4595436.071		1160	398055.273	4594660.946
1111	397823.55	4595435.013		1161	398053.685	4594638.721
1112	397808.945	4595436.706		1162	398050.51	4594618.877
1113	397789.26	4595447.924		1163	398062.416	4594599.033
1114	397776.772	4595452.369		1164	398083.848	4594585.54
1115	397756.028	4595447.924		1165	398123.535	4594593.477
1116	397741.741	4595433.637		1166	398154.492	4594607.765
1117	397736.449	4595424.641		1167	398161.371	4594608.426

1118	397735.92	4595411.412		1168	398175.261	4594593.742
1119	397733.274	4595390.774		1169	398184.39	4594575.485
1120	397733.274	4595377.016		1170	398190.343	4594559.214
1121	397732.216	4595351.616		1171	398201.455	4594544.529
1122	397733.803	4595342.62		1172	398218.918	4594537.782
1123	397742.27	4595327.803		1173	398235.19	4594530.638
1124	397753.382	4595310.341		1174	398258.605	4594507.62
1125	397762.378	4595290.232		1175	398268.924	4594493.729
1126	397765.553	4595279.649		1176	398276.465	4594474.282
1127	397766.083	4595268.007		1177	398285.593	4594455.232
1128	397757.087	4595255.836		1178	398294.324	4594442.532
1129	397717.399	4595237.316		1179	398308.612	4594419.91
1130	397693.587	4595220.911		1180	398320.915	4594410.385
1131	397676.124	4595196.57		1181	398339.171	4594402.844
1132	397662.366	4595182.811		1182	398358.221	4594396.494
1133	397672.949	4595151.59		1183	398378.859	4594386.573
1134	397679.828	4595124.074		1184	398396.85	4594370.334
1135	397687.766	4595098.674		1185	398405.317	4594352.871
1136	397688.824	4595062.161		1186	398414.313	4594332.763
1137	397701.127	4595058.589		1187	398416.43	4594319.004
1138	397716.341	4595053.959		1188	398407.963	4594299.425
1139	397748.752	4595040.73		1189	398393.146	4594277.729
1140	397770.58	4595022.87		1190	398375.155	4594263.442
1141	397798.362	4594991.12		1191	398365.1	4594250.742
1142	397821.513	4594977.891		1192	398356.105	4594236.454
1143	397842.68	4594971.276		1193	398337.584	4594218.992
1144	397861.862	4594970.615		1194	398322.767	4594197.296
1145	397879.06	4594971.276		1195	398306.363	4594181.421
1146	397895.596	4594983.183		1196	398303.188	4594168.721
1147	397910.81	4594989.136		1197	398302.659	4594157.079
1148	397918.747	4594983.183		1198	398303.188	4594143.85
1149	397925.362	4594957.386		1199	398297.367	4594136.971
1150	397929.86	4594918.122		1200	398295.779	4594124.271
1201	398297.896	4594113.687				
1202	398305.437	4594096.225				
1203	398305.966	4594080.879				
1204	398301.203	4594061.829				
1205	398297.499	4594041.721				

1206	398299.087	4594020.554				
1207	398296.441	4594002.033				
1208	398299.616	4593987.216				
1209	398320.783	4593959.7				
1210	398347.241	4593937.475				
1211	398379.97	4593896.623				
1212	398427.595	4593874.133				
1213	398464.637	4593855.612				
1214	398514.908	4593819.893				
1215	398546.658	4593785.498				
1216	398578.408	4593751.102				
1217	398608.835	4593723.32				
1218	398635.293	4593694.216				
1219	398665.721	4593662.466				
1220	398696.148	4593636.008				
1221	398708.054	4593616.164				
1222	398734.512	4593589.706				
1223	398759.648	4593571.185				
1224	398778.169	4593532.82				
1225	398791.398	4593494.455				
1226	398800.658	4593456.091				
1227	398805.95	4593421.695				
1228	398821.825	4593385.976				
1229	398824.471	4593367.455				
1230	398852.402	4593355.383				
1231	398858.752	4593341.625				
1232	398872.511	4593325.75				
1233	398897.911	4593323.633				
1234	398920.136	4593334.216				
1235	398940.244	4593334.216				
1236	398963.528	4593322.575				
1237	398985.753	4593291.883				
1238	399042.903	4593184.991				

