

**VENDIM**  
**Nr. 354, datë 2.5.2018**

**PËR ZGJERIMIN DHE KTHIMIN E  
PARKUT RAJONAL “ZAGORI” NË PARK  
NATYROR**

Në mbështetje të nenit 100 të Kushtetutës dhe të pikës 4, të nenit 12, të ligjit nr. 81/2017, “Për zonat e mbrojtura”, me propozimin e ministrit të Turizmit dhe Mjedisit, Këshilli i Ministrave

**VENDOSI:**

1. Shpalljen e ekosistemit natyror malor të zonës së Zagorisë “Park natyror i Zagorisë”, me një sipërfaqe prej 24 590,320 (njëzet e katër mijë e pesëqind e nëntëdhjetë presje treqind e njëzet) ha, sipas hartës dhe kufijve të paraqitur në tabelën e koordinatave, përkatësisht në shtojcat 1 e 2, që i bashkëlidhen këtij vendimi dhe janë pjesë përbërëse e tij.

2. Kjo zonë përfshin territore urbane, troje të përziera me tokë bujqësore e pyjore, shkurre dhe sipërfaqe ujore. Mbulesa e tokës brenda sipërfaqes së parkut natyror “Zagori” paraqitet në tabelën nr. 1, që i bashkëlidhet këtij vendimi dhe është pjesë përbërëse e tij.

3. Parku natyror “Zagori” ndahet në dy nënzona ruajtjeje e administrimi, si më poshtë vijon:

a) Nënzona qendrore, me sipërfaqe 9 358,390 (nëntë mijë e treqind e pesëdhjetë e tetë presje treqind e nëntëdhjetë) ha, e shënuar në hartë me ZQ.

Kjo nënzona përfshin habitatet kryesore pyjore, shkurre dhe përcaktohet si zonë me vlera të larta për trashëgiminë natyrore e biodiversitetin dhe në të zbatohet shkalla më e lartë e mbrojtjes, që siguron një territor të pashqetësuar. Në këtë nënzona lejohen kërkimi shkencor, zhvillimi i veprimtarive ekoturistike të lira në natyrë, si dhe kullotja sezonale.

b) Nënzona e përdorimit tradicional, me sipërfaqe 15 231,930 (pesëmbëdhjetë mijë e dyqind e tridhjetë e një presje nëntëqind e tridhjetë) ha, e shënuar në hartë me ZPT.

Kjo nënzona përfshin tokat bujqësore e kullotat dhe territore ujore, ku mundësohet vazhdimi i veprimtarive tradicionale, si: bujqësi, kullotje, grumbullim i bimëve mjekësore e aromatike, me përdorim të balancuar të tyre, dhe nuk lejohen ndërtimet e veprimtaritë që shkaktojnë ndryshimin e gjendjes natyrore të ekosistemit. Në nënzona e përdorimit tradicional zbatohet shkalla e dytë e mbrojtjes, që siguron një territor me ndikim të ulët dhe kontroll të veprimtarive ekonomike, sociale, agrobiznesit, argëtuese, sportive e ekoturistike. Në këtë zonë lejohet ndërtimi i infrastrukturës, sipas planeve të zhvillimit urban e turistik, të miratuara nga Këshilli Kombëtar i Territorit (KKT), të cilat nuk cenojnë integritetin ekologjik të ekosistemit dhe respektojnë funksionet e zonës së mbrojtur, vlerat ekologjike dhe ato të peizazhit natyror e kulturor.

c) Zonimi dhe sipërfaqet në parkun natyror “Zagori” paraqiten në tabelën nr. 2, që i bashkëlidhet këtij vendimi dhe është pjesë përbërëse e tij.

4. Ministria e Turizmit dhe Mjedisit, në bashkëpunim me ministritë e tjera të linjës dhe me njësitë e qeverisjes vendore, me institucionet kërkimore-shkencore, me përfaqësuesit e biznesit e të pronarëve privatë, organizata të shoqërisë civile, brenda 1 viti nga hyrja në fuqi e këtij vendimi, të hartojnë planin e menaxhimit të parkut natyror, për t’u miratuar nga ministri i Turizmit dhe Mjedisit.

5. Administrata Rajonale e Zonave të Mbrojtura të qarkut Gjirokastrë kryen funksionet e administratës së parkut natyror “Zagori”.

6. Ngarkohen Ministria e Turizmit dhe Mjedisit dhe organet përkatëse të qeverisjes vendore për zbatimin e këtij vendimi.

Ky vendim hyn në fuqi menjëherë dhe botohet në Fletoren Zyrtare.

**KRYEMINISTRI**  
**Edi Rama**

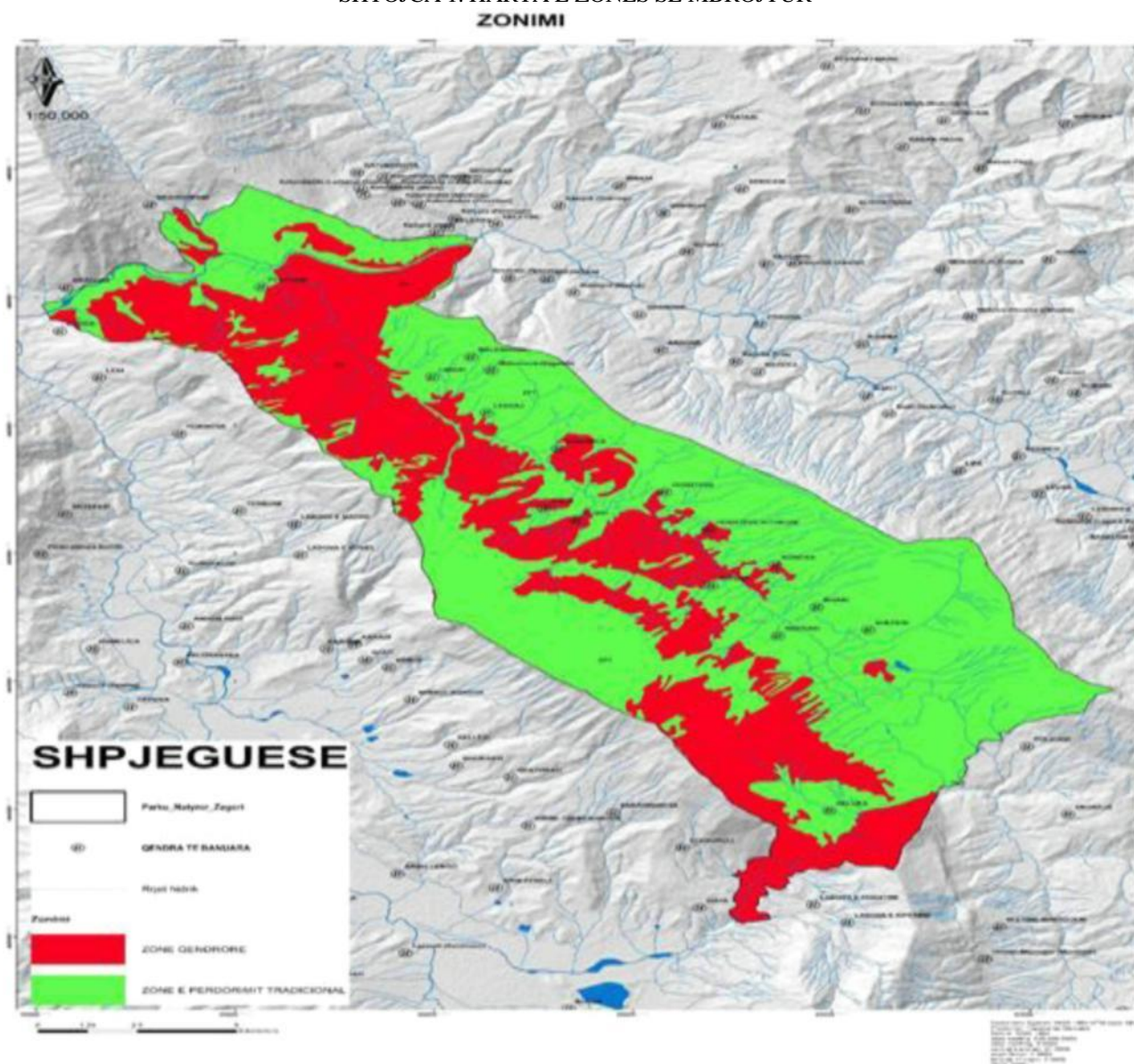
Tabela nr. 1. Sipërfaqja e parkut e përshkruar sipas mbulesës

Mbulesa	Sipërfaqja
Hapësira të hapura me bimësi të pakët	2.498,74
Kullota	743,81
Kultura të përherëshme	186,04
Pyje	7.032,07
Shkurre dhe vegjetacion bimor	11.901,45
Toka të punueshme bujqësore	150,26
Trupa ujorë	130,33
Zona urbane	29,99
Zonat bujqësore heterogjene	1.917,62
	24.590,320

Tabela nr. 2. Zonimi i parkut natyror

Zonimi	Sipërfaqe (ha)	Përqindja
Zonë qendrore	9 358,390	38,06
Zonë e përdorimit tradicional	15 231,930	61,94
	24 590,320	100

SHTOJCA 1. HARTA E ZONËS SË MBROJTUR



**SHTOJCA 2. KOORDINATAT E PARKUT NATYROR “ZAGORI”**

<b>PIKA</b>	<b>X</b>	<b>Y</b>		<b>PIKA</b>	<b>X</b>	<b>Y</b>
1	438311.3788	4437011.744		51	437918.82	4435610.805
2	438310.0559	4436969.41		52	437884.38	4435605.916
3	438310.0559	4436936.337		53	437859.71	4435592.009
4	438310.0559	4436905.91		54	437811.44	4435542.767
5	438317.9934	4436891.358		55	437763.81	4435529.538
6	438341.8059	4436863.577		56	437732.34	4435547.453
7	438391.4799	4436754.24		57	437677.82	4435578.486
8	438378.8477	4436718.055		58	437638.13	4435597.007
9	438384.9468	4436653.068		59	437616.97	4435627.434
10	438361.7582	4436613.656		60	437595.8	4435673.736
11	438302.5961	4436620.351		61	437575.96	4435712.101
12	438239.0104	4436603.39		62	437544.21	4435762.372
13	438179.5975	4436554.644		63	437486.89	4435801.911
14	438151.5007	4436517.641		64	437470.66	4435825.2
15	438145.6433	4436436.079		65	437455.72	4435881.439
16	438152.8666	4436359.883		66	437447.09	4435959.697
17	438154.0043	4436305.104		67	437446.29	4435980.927
18	438150.9007	4436279.056		68	437429.11	4436024.31
19	438142.3467	4436255.137		69	437450.37	4436041.967
20	438128.5195	4436229.079		70	437491.55	4436076.168
21	438098.9672	4436194.2		71	437532.83	4436106.86
22	438075.3048	4436155.971		72	437547.65	4436122.735
23	438068.838	4436139.358		73	437564.58	4436139.669
24	438064.9879	4436102.9		74	437597.39	4436150.252
25	438073.7835	4436057.77		75	437622.79	4436162.952
26	438093.6721	4436037.253		76	437633.37	4436179.885
27	438135.1288	4435977.868		77	437636.29	4436226.058
28	438149.9866	4435928.019		78	437646.47	4436246.131
29	438162.131	4435913.835		79	437633.42	4436288.956
30	438214.8057	4435930.808		80	437601.67	4436345.841
31	438232.0036	4435936.1		81	437571.8	4436376.72
32	438258.462	4435942.714		82	437560.96	4436396.17
33	438278.3058	4435942.714		83	437553.2	4436410.084
34	438360.3268	4435926.839		84	437547.93	4436435.119
35	438392.5004	4435891.539		85	437547.58	4436470.226
36	438408.5868	4435873.889		86	437553.13	4436503.183
37	438429.1186	4435769.412		87	437560.39	4436560.213
38	438458.0406	4435726.966		88	437564.11	4436602.694
39	438457.2194	4435709.052		89	437567.4	4436617.998
40	438451.8064	4435695.48		90	437578.45	4436669.295
41	438390.8863	4435689.217		91	437601.47	4436702.632

42	438339.6816	4435685.084		92	437626.87	4436751.051
43	438312.4861	4435682.114		93	437641.95	4436783.595
44	438254.9712	4435666.144		94	437664.17	4436826.458
45	438209.0334	4435641.036		95	437680.84	4436871.702
46	438158.6682	4435624.016		96	437698.44	4436926.206
47	438102.9993	4435632.659		97	437717.77	4436995.479
48	438063.4966	4435629.125		98	437728.6	4437049.237
49	438020.6189	4435601.253		99	437720.66	4437073.05
50	437971.6475	4435602.094		100	437702	4437111.578
101	437712.1213	4437131.195		151	437869.05	4437626.689
102	437718.9118	4437160.44		152	437881.87	4437638.04
103	437722.952	4437239.787		153	437887.53	4437647.895
104	437727.9412	4437282.568		154	437891.83	4437662.267
105	437723.7128	4437310.434		155	437895.51	4437685.858
106	437620.6495	4437346.1		156	437903.2	4437709.749
107	437592.7695	4437373.681		157	437903.73	4437732.322
108	437592.7491	4437373.7		158	437908.24	4437750.523
109	437574.8714	4437383.227		159	437909.64	4437773.078
110	437559.2201	4437387.696		160	437913.28	4437791.108
111	437542.4901	4437388.522		161	437912.48	4437799.795
112	437531.1839	4437391.567		162	437904.35	4437808.02
113	437520.0797	4437397.398		163	437892.92	4437816.794
114	437515.0884	4437405.253		164	437889.48	4437822.905
115	437515.5194	4437415.14		165	437891.14	4437834.347
116	437523.4374	4437424.11		166	437899.44	4437846.955
117	437534.2806	4437429.049		167	437902.88	4437862.556
118	437553.1321	4437431.158		168	437901.68	4437886.353
119	437566.7189	4437429.659		169	437897.47	4437904.447
120	437577.3473	4437429.216		170	437895.5	4437918.527
121	437593.4195	4437433.424		171	437896.81	4437929.628
122	437603.9346	4437439.942		172	437901.78	4437941.742
123	437605.7353	4437447.398		173	437912.19	4437955.72
124	437606.3638	4437459.547		174	437929.76	4437973.459
125	437605.6227	4437476.214		175	437940.65	4437982.927
126	437611.3741	4437496.491		176	437951.51	4437989.609
127	437622.82	4437510.461		177	437965.05	4438004.084
128	437638.2815	4437525.441		178	437983.02	4438027.025
129	437652.0364	4437544.42		179	438011.42	4438046.762
130	437656.6419	4437553.94		180	438033.14	4438060.471
131	437661.6454	4437568.306		181	438055.17	4438067.583
132	437666.0889	4437578.859		182	438074.01	4438069.516
133	437672.5897	4437584.545		183	438085.37	4438073.075
134	437679.7097	4437581.534		184	438110.05	4438085.894

135	437683.6623	4437574.897		185	438122.51	4438095.161
136	437697.7498	4437549.262		186	438141.02	4438100.05
137	437709.1906	4437541.875		187	438163.19	4438103.166
138	437725.0321	4437538.792		188	438193.33	4438102.232
139	437756.9726	4437543.214		189	438205.55	4438104.563
140	437782.5615	4437539.364		190	438219.6	4438116.603
141	437812.5424	4437538.763		191	438238.01	4438129.296
142	437826.4644	4437535.529		192	438254.56	4438129.339
143	437851.313	4437525.602		193	438272.3	4438124.155
144	437858.2853	4437525.367		194	438304.18	4438121.121
145	437865.8232	4437530.689		195	438333.28	4438119.841
146	437867.2769	4437538.492		196	438386.42	4438123.06
147	437862.4871	4437549.12		197	438416.91	4438131.127
148	437850.988	4437571.27		198	438442.82	4438139.43
149	437848.692	4437588.65		199	438461.62	4438149.179
150	437857.7248	4437606.813		200	438464.17	4438150.501
201	438466.4894	4438156.781		251	433304.23	4444953.984
202	438472.216	4438203.352		252	433013.19	4445139.193
203	438467.569	4438284.464		253	432806.81	4445324.401
204	438466.4231	4438354.343		254	432573.98	4445551.944
205	438466.1772	4438409.084		255	432415.23	4445652.485
206	438471.6933	4438464.738		256	432282.93	4445747.736
207	438486.6841	4438508.256		257	432177.1	4445880.028
208	438504.7169	4438552.304		258	431938.98	4446075.82
209	438513.9774	4438599.678		259	431790.81	4446245.153
210	438525.0935	4438671.46		260	431552.68	4446472.695
211	438540.1561	4438727.175		261	431415.1	4446610.279
212	438555.8641	4438773.066		262	431272.22	4446731.988
213	438578.1449	4438809.147		263	431049.97	4446959.53
214	438621.4091	4438850.036		264	430973.51	4447076.476
215	438652.1706	4438874.399		265	430896.78	4447116.163
216	438648.2366	4438891.774		266	430851.8	4447182.309
217	438632.3616	4439018.775		267	430743.32	4447240.518
218	438640.2991	4439153.713		268	430653.36	4447285.497
219	438653.9693	4439294.934		269	430571.34	4447319.893
220	438508.4481	4439447.07		270	430510.49	4447311.955
221	438316.6248	4439526.445		271	430433.76	4447309.31
222	438224.0205	4439665.352		272	430354.38	4447388.685
223	437958.3342	4439851.663		273	430259.13	4447436.31
224	437521.7708	4440222.08		274	430155.94	4447462.768
225	437402.7081	4440374.216		275	430095.09	4447494.518
226	437250.5724	4440738.019		276	430055.4	4447579.185
227	437032.2907	4440976.144		277	430026.3	4447714.123

228	436880.155	4441247.343		278	430010.42	4447814.665
229	436714.79	4441386.249		279	429999.84	4447894.04
230	436522.9667	4441683.906		280	430005.13	4448087.186
231	436413.8259	4441920.708		281	430031.59	4448248.582
232	436307.9923	4442095.334		282	430050.11	4448290.916
233	436101.6169	4442396.959		283	429999.84	4448468.187
234	436064.5752	4442518.668		284	429994.28	4448708.429
235	436025.8597	4442683.932		285	429861.99	4449073.555
236	436007.3389	4442726.266		286	429724.41	4449359.305
237	435963.4372	4442792.63		287	429692.66	4449507.472
238	435733.2493	4443038.693		288	429703.24	4449676.806
239	435574.4989	4443364.131		289	429734.99	4449862.015
240	435336.3735	4443443.506		290	429761.45	4450126.599
241	435098.248	4443586.382		291	429637.63	4450609.842
242	434836.31	4443713.382		292	429608.14	4450664.917
243	434614.0595	4443895.945		293	429552.58	4450805.147
244	434471.1842	4443967.382		294	429465.27	4451019.459
245	434240.9963	4444149.945		295	429393.83	4451212.606
246	433994.9333	4444419.821		296	429311.81	4451291.981
247	433867.933	4444562.696		297	429176.87	4451395.169
248	433844.1205	4444642.071		298	429105.43	4451485.127
249	433722.2704	4444636.483		299	429026.06	4451588.315
250	433510.6033	4444779.359		300	429020.77	4451688.857
301	429010.1821	4451778.815		351	425292.9	4456435.144
302	428975.7862	4451866.128		352	425275.44	4456489.119
303	428978.4321	4452102.076		353	425242.1	4456551.032
304	428968.5102	4452178.144		354	425218.29	4456616.119
305	428740.3066	4452244.29		355	425189.71	4456671.682
306	428584.8636	4452300.514		356	425184.95	4456706.607
307	428518.7176	4452350.123		357	425161.14	4456749.47
308	428475.7227	4452475.801		358	425140.24	4456815.219
309	428442.6497	4452637.858		359	425130.71	4456874.485
310	428412.8841	4452717.233		360	425115.89	4456929.519
311	428412.8841	4452813.145		361	425095.79	4456978.202
312	428376.5038	4452852.833		362	425097.9	4457015.244
313	428214.4462	4452922.286		363	425077.79	4457050.169
314	428118.5345	4453001.661		364	425012.18	4457112.611
315	428012.701	4453140.568		365	424980.43	4457158.119
316	427930.0185	4453253.016		366	424962.43	4457191.986
317	427847.3361	4453299.318		367	424942.33	4457219.503
318	427767.9609	4453378.693		368	424925.39	4457258.661
319	427718.3514	4453444.839		369	424921.16	4457292.528
320	427698.5076	4453507.678		370	424893.64	4457322.161

321	427655.5128	4453636.662		371	424861.89	4457348.62
322	427579.4449	4453706.116		372	424823.79	4457394.128
323	427447.153	4453795.413		373	424794.25	4457467.594
324	427281.3912	4453928.631		374	424773.08	4457498.286
325	427202.016	4454013.298		375	424711.7	4457566.019
326	427172.9118	4454121.777		376	424671.48	4457613.645
327	427151.7451	4454240.84		377	424657.72	4457635.87
328	427119.995	4454341.382		378	424648.2	4457662.328
329	427040.6199	4454481.611		379	424631.26	4457690.903
330	426990.3489	4454566.278		380	424616.45	4457723.711
331	426897.7446	4454672.111		381	424605.86	4457763.928
332	426807.7861	4454762.07		382	424595.28	4457792.503
333	426760.161	4454870.549		383	424574.11	4457810.495
334	426725.7651	4454891.716		384	424504.26	4457828.487
335	426430.9745	4454945.404		385	424442.88	4457852.828
336	426265.8742	4455030.071		386	424283.07	4457899.395
337	426164.274	4455099.921		387	424205.81	4457902.57
338	426107.1239	4455199.405		388	424148.66	4457886.695
339	426043.6238	4455286.188		389	424096.8	4457879.287
340	425950.4902	4455400.489		390	424052.35	4457896.22
341	425749.4065	4455588.872		391	423984.62	4457947.02
342	425629.4508	4455704.892		392	423938.05	4457983.004
343	425508.8006	4455844.593		393	423894.66	4458010.52
344	425481.813	4455923.968		394	423835.4	4458020.045
345	425450.0629	4456004.931		395	423817.07	4458034.96
346	425413.5504	4456093.831		396	423789.89	4458057.087
347	425404.0254	4456162.093		397	423740.76	4458046.853
348	425361.1628	4456238.293		398	423718.57	4458028.844
349	425318.3002	4456304.969		399	423657.18	4458040.486
350	425302.4251	4456366.881		400	423597.39	4458060.065
401	423577.2772	4458072.765		451	420357.35	4459180.494
402	423559.2855	4458087.582		452	420356.03	4459209.598
403	423535.473	4458103.457		453	420350.08	4459243.332
404	423487.8479	4458130.444		454	420147.56	4459706.63
405	423429.1102	4458147.378		455	420175.63	4459719.104
406	423388.3643	4458158.49		456	420237.55	4459761.966
407	423339.1517	4458186.007		457	420303.43	4459781.81
408	423272.653	4458225.483		458	420342.32	4459790.542
409	423240.9029	4458241.358		459	420363.75	4459796.892
410	423153.7851	4458286.057		460	420420.53	4459805.779
411	423082.1526	4458338.725		461	420447.64	4459823.852
412	423033.4692	4458358.833		462	420494.72	4459827.848
413	422951.9773	4458363.066		463	420528.06	4459831.023

414	422914.9356	4458362.008		464	420589.97	4459843.723
415	422876.8355	4458362.008		465	420620.13	4459862.773
416	422852.4938	4458371.533		466	420628.83	4459869.215
417	422735.6536	4458344.299		467	420645.68	4459887.147
418	422279.952	4458258.595		468	420653.47	4459903.254
419	421930.7013	4458255.42		469	420661.41	4459921.733
420	421756.0759	4458291.933		470	420667.63	4459941.063
421	421689.4008	4458339.558		471	420671.99	4459949.001
422	421640.1882	4458387.183		472	420680.72	4459954.16
423	421583.0381	4458434.808		473	420687.07	4459956.938
424	421494.1379	4458482.433		474	420698.55	4459958.799
425	421432.2253	4458530.058		475	420704.93	4459978.37
426	421405.7978	4458582.914		476	420712.08	4459994.245
427	421308.819	4458651.37		477	420721.21	4460001.388
428	421249.5522	4458660.895		478	420722.4	4460014.088
429	421198.7521	4458669.362		479	420728.35	4460027.185
430	421162.7687	4458683.12		480	420738.67	4460035.917
431	421129.9603	4458698.995		481	420748.99	4460045.045
432	421079.1602	4458734.979		482	420781.35	4460064.112
433	421043.1768	4458757.204		483	420815.09	4460090.24
434	421011.4267	4458783.662		484	420830.63	4460104.461
435	420997.6683	4458817.529		485	420842.21	4460110.745
436	420965.897	4458884.027		486	420856.76	4460120.006
437	420952.1599	4458912.779		487	420866.68	4460132.904
438	420932.0515	4458951.937		488	420873.3	4460157.378
439	420892.8931	4458983.688		489	420883.55	4460190.12
440	420837.8597	4459004.854		490	420923.24	4460226.831
441	420765.8929	4459029.196		491	420946.06	4460243.037
442	420607.2988	4459081.613		492	420971.61	4460257.501
443	420589.7154	4459091.301		493	420984.31	4460261.47
444	420500.8901	4459119.64		494	420999.39	4460265.042
445	420460.541	4459119.64		495	421010.5	4460262.661
446	420424.8222	4459112.363		496	421031.14	4460259.486
447	420389.7649	4459118.317		497	421046.22	4460269.407
448	420369.9211	4459126.916		498	421061.7	4460278.139
449	420358.6763	4459138.822		499	421089.48	4460302.348
450	420357.3533	4459160.65		500	421112.89	4460323.779
501	421122.0228	4460352.751		551	423697.83	4460944.147
502	421136.7072	4460372.198		552	423902.62	4460931.05
503	421152.9791	4460389.264		553	423955.2	4460927.795
504	421172.0291	4460399.583		554	423975.36	4460976.208
505	421188.6979	4460413.87		555	423972.18	4461038.65
506	421201.7969	4460437.751		556	423966.89	4461104.267



507	421206.5573	4460450.78		557	423979.59	4461140.25
508	421226.282	4460469.671		558	423985.94	4461183.642
509	421278.3713	4460504.31		559	423962.66	4461234.442
510	421321.3662	4460531.43		560	423830.37	4461367.792
511	421337.3161	4460552.136		561	423773.93	4461436.088
512	421396.1111	4460550.612		562	423729.55	4461507.36
513	421544.2781	4460599.56		563	423705.74	4461588.323
514	421643.497	4460651.815		564	423658.98	4461677.7
515	421695.0909	4460675.628		565	423611.36	4461769.775
516	421691.3306	4460692.639		566	423590.72	4461860.262
517	421700.8236	4460701.7		567	423569.99	4461919.661
518	421727.9434	4460741.388		568	423551.47	4461977.87
519	421796.7352	4460835.977		569	423534.27	4462020.203
520	421821.8707	4460876.326		570	423503.85	4462069.151
521	421890.001	4460975.765		571	423450.93	4462119.422
522	421913.8136	4461022.729		572	423407.27	4462161.756
523	421949.5324	4461104.088		573	423346.42	4462205.412
524	421965.4074	4461123.271		574	423290.86	4462274.204
525	422017.0013	4461167.588		575	423252.49	4462325.798
526	422045.444	4461190.078		576	423240.58	4462356.225
527	422161.8609	4461252.255		577	423235.29	4462410.465
528	422229.3298	4461289.297		578	423222.06	4462430.308
529	422294.3182	4461301.402		579	423182.38	4462476.611
530	422362.9777	4461310.53		580	423172.45	4462499.1
531	422410.206	4461316.483		581	423142.03	4462541.434
532	422428.4622	4461324.024		582	423132.77	4462557.97
533	422456.6404	4461334.342		583	423130.12	4462582.444
534	422478.4686	4461333.549		584	423130.12	4462610.887
535	422542.3656	4461314.499		585	423123.51	4462641.975
536	422579.6719	4461308.149		586	423120.86	4462663.804
537	422623.3283	4461304.577		587	423130.12	4462693.569
538	422651.1096	4461297.433		588	423128.38	4462741.481
539	422707.2454	4461280.4		589	423114.89	4462770.85
540	422743.9565	4461261.88		590	423106.95	4462789.106
541	422775.0451	4461235.421		591	423110.92	4462813.712
542	422809.441	4461193.749		592	423112.5	4462856.575
543	422840.1988	4461159.023		593	423104.57	4462877.213
544	422890.139	4461127.273		594	423102.19	4462896.263
545	422923.5428	4461095.522		595	423109.33	4462907.375
546	422950.8831	4461078.159		596	423117.27	4462925.631
547	423048.4484	4461030.865		597	423141.87	4462951.031
548	423164.8653	4460975.302		598	423168.07	4462983.575
549	423242.2561	4460968.026		599	423191.88	4463019.294

550	423583.9264	4460950.101		600	423199.02	4463041.519
601	423203.7856	4463065.332		651	423947.45	4463160.502
602	423227.5981	4463132.007		652	423951.42	4463134.309
603	423237.1231	4463155.819		653	423956.15	4463109.491
604	423237.1231	4463174.869		654	423968.05	4463088.853
605	423226.8044	4463197.094		655	423968.85	4463068.216
606	423221.2481	4463216.144		656	423969.64	4463049.959
607	423214.8981	4463235.194		657	423975.2	4463032.497
608	423228.3125	4463258.134		658	423986.31	4463003.128
609	423214.8187	4463297.821		659	423989.49	4462969.79
610	423220.375	4463312.109		660	424019.65	4462916.609
611	423242.6	4463312.109		661	424054.57	4462892.797
612	423257.6813	4463304.965		662	424055.37	4462883.271
613	423287.0501	4463304.172		663	424036.32	4462886.447
614	423317.2127	4463301.79		664	424000.6	4462901.528
615	423349.7565	4463296.234		665	423983.14	4462905.497
616	423352.1377	4463290.678		666	423979.17	4462896.765
617	423346.5815	4463278.771		667	423999.8	4462881.684
618	423337.0565	4463266.865		668	424027.59	4462847.553
619	423341.0252	4463259.721		669	424042.67	4462833.265
620	423360.869	4463258.928		670	424076	4462822.946
621	423375.9503	4463253.371		671	424109.34	4462822.946
622	423373.569	4463229.559		672	424133.15	4462831.678
623	423391.0316	4463216.065		673	424143.47	4462844.378
624	423429.1316	4463195.428		674	424149.03	4462873.746
625	423441.0379	4463203.365		675	424154.59	4462922.165
626	423459.2942	4463216.065		676	424167.29	4462969.79
627	423472.788	4463254.165		677	424179.99	4463020.591
628	423483.1068	4463275.596		678	424198.24	4463064.247
629	423483.9005	4463297.028		679	424233.67	4463110.046
630	423463.263	4463341.478		680	424267.01	4463184.659
631	423442.6254	4463421.647		681	424297.17	4463227.522
632	423463.263	4463440.697		682	424354.32	4463265.622
633	423478.3442	4463458.159		683	424428.93	4463302.134
634	423488.663	4463481.972		684	424505.13	4463351.347
635	423499.7755	4463500.228		685	424570.22	4463406.909
636	423514.8568	4463504.197		686	424644.83	4463462.472
637	423533.1131	4463484.353		687	424687.7	4463510.097
638	423556.1319	4463439.903		688	424765.48	4463557.722
639	423602.1695	4463412.915		689	424832.16	4463565.66
640	423634.7133	4463408.947		690	424909.2	4463597.368
641	423663.2884	4463404.978		691	425017.89	4463759.541
642	423699.0072	4463408.153		692	425078.17	4463944.283

643	423760.9198	4463397.04		693	425129.47	4464067.813
644	423794.2574	4463389.897		694	425181.85	4464163.063
645	423831.5637	4463347.034		695	425240.59	4464272.601
646	423838.7075	4463315.284		696	425286.63	4464356.738
647	423859.345	4463258.928		697	425392.99	4464293.238
648	423883.9513	4463237.496		698	425583.23	4464192.63
649	423902.2076	4463225.59		699	425919.45	4464014.817
650	423922.8451	4463181.934		700	426321.09	4463749.704
701	426725.1455	4463505.12		751	430837.7	4461670.376
702	426830.6423	4463485.583		752	430814.69	4461630.087
703	426933.83	4463440.604		753	430787.57	4461600.983
704	427025.0696	4463372.907		754	430725.52	4461569.26
705	427102.8819	4463335.947		755	430695.15	4461542.393
706	427288.0906	4463245.988		756	430629.48	4461420.404
707	427346.0841	4463206.497		757	430575.56	4461383.799
708	427422.4847	4463160.542		758	430557.38	4461371.456
709	427601.9042	4463082.092		759	430554.74	4461344.336
710	427709.1872	4462994.354		760	430559.37	4461308.618
711	427727.3985	4462981.894		761	430544.79	4461150.218
712	427802.988	4462851.904		762	430511.46	4461044.54
713	427865.1652	4462801.634		763	430491.62	4460945.321
714	427914.1132	4462783.113		764	430479.71	4460869.915
715	427963.0612	4462776.498		765	430443.99	4460715.133
716	428081.8457	4462757.463		766	430400.34	4460604.008
717	428230.0092	4462669.195		767	430348.74	4460548.445
718	428359.8929	4462530.611		768	430249.52	4460441.289
719	428441.3847	4462442.77		769	430110.62	4460342.07
720	428493.1528	4462382.339		770	430023.3	4460270.632
721	428510.4681	4462367.57		771	429995.52	4460226.976
722	428690.3851	4462267.028		772	430003.46	4460143.632
723	428811.0796	4462221.767		773	430003.46	4460080.132
724	429030.9321	4462199.636		774	429971.71	4459996.788
725	429092.5526	4462198.236		775	429840.74	4459909.475
726	429155.8515	4462200.346		776	429678.02	4459853.913
727	429643.9184	4462290.369		777	429570.87	4459746.756
728	429903.2106	4462335.349		778	429529.42	4459708.052
729	430228.6487	4462380.328		779	429878.17	4459461.963
730	430629.1625	4462423.874		780	430096.45	4459303.213
731	430772.8316	4462401.649		781	430314.73	4459215.9
732	430800.6129	4462369.105		782	430633.21	4459194.051
733	430821.7514	4462318.798		783	430791.96	4459168.651
734	430841.1647	4462303.472		784	430925.31	4459194.051
735	430916.5006	4462248.455		785	431084.06	4459238.501

736	430942.6944	4462254.011		786	431147.56	4459162.301
737	430959.3632	4462259.567		787	431204.71	4459054.35
738	430971.2695	4462259.567		788	431249.17	4458882.9
739	430998.257	4462257.98		789	431392.44	4458640.989
740	431024.4508	4462256.392		790	431481.28	4458537.687
741	431046.6759	4462250.836		791	431541.27	4458266.949
742	431054.6134	4462156.38		792	431623.82	4458197.099
743	431020.6937	4462164.37		793	431706.37	4458139.949
744	431001.6437	4462162.253		794	432071.15	4457991.305
745	430983.652	4462075.47		795	432151.59	4457963.789
746	430969.307	4462003.738		796	432284.94	4457917.222
747	430956.6892	4461972.193		797	432495.61	4457899.191
748	430935.5225	4461879.589		798	432703.32	4457860.548
749	430911.7099	4461786.984		799	432731.75	4457857.842
750	430856.1473	4461691.734		800	432771.77	4457811.388
801	432877.6046	4457743.655		851	445549.03	4445798.354
802	433068.3355	4457639.838		852	445594.39	4445718.369
803	433087.8906	4457618.718		853	445611.32	4445671.803
804	433197.0314	4457509.577		854	445628.25	4445612.536
805	433296.2504	4457373.978		855	445651.54	4445546.919
806	433359.089	4457278.067		856	445672.7	4445510.936
807	433425.235	4457175.54		857	445693.36	4445487.46
808	433484.7664	4457079.629		858	445846.27	4445375.469
809	433587.0005	4456940.137		859	445998.67	4445299.269
810	433745.1918	4456700.682		860	446151.07	4445176.502
811	434067.6117	4456180.65		861	446254.79	4445060.085
812	434456.9142	4455635.606		862	446337.34	4444992.351
813	434924.2001	4455160.984		863	446392.37	4444958.485
814	436399.0119	4454443.445		864	446462.22	4444920.384
815	437673.0151	4453509.491		865	446510.9	4444894.984
816	438845.951	4452779.2		866	446682.35	4444856.884
817	439492.2046	4452384.734		867	446752.21	4444816.668
818	439939.871	4451883.347		868	446819.94	4444789.151
819	441230.167	4450838.724		869	446870.74	4444763.751
820	441862.4021	4450345.272		870	446957.52	4444712.951
821	442229.3674	4450497.648		871	447069.71	4444676.967
822	442987.8245	4450548.611		872	446989.27	4444596.534
823	443021.8364	4450550.663		873	446919.42	4444549.967
824	443372.5876	4450571.819		874	446836.87	4444535.15
825	443475.1139	4450518.902		875	446670.32	4444500.06
826	443561.1036	4450432.912		876	446643.86	4444470.956
827	443643.7861	4450346.922		877	446630.63	4444439.206
828	443713.2394	4450214.63		878	446610.79	4444396.872

829	443743.7796	4450094.741		879	446602.85	4444366.445
830	443873.5049	4449770.735		880	446589.4	4444308.766
831	443905.0627	4449549.863		881	446472.69	4444200.081
832	443967.9013	4449361.347		882	446378.02	4443901.195
833	444185.5321	4448978.627		883	446319.28	4443813.882
834	444327.3448	4448709.565		884	446225.62	4443764.67
835	444471.5022	4448335.525		885	445922.41	4443718.632
836	444466.5202	4448230.913		886	445704.92	4443686.882
837	444488.7453	4448138.838		887	445611.26	4443640.845
838	444533.8418	4448026.229		888	445539.82	4443602.745
839	444539.5454	4447817.633		889	445476.32	4443593.219
840	444573.9413	4447587.445		890	445331.86	4443585.282
841	444575.8815	4447298.167		891	445194.77	4443490.429
842	444591.7566	4447118.25		892	445005.33	4443441.745
843	444665.8401	4447054.749		893	444914.31	4443415.287
844	444758.4444	4446917.166		894	444812.71	4443367.662
845	444919.8406	4446753.124		895	444773.55	4443342.262
846	445112.9868	4446530.873		896	444746.04	4443312.628
847	445226.7578	4446332.435		897	444707.93	4443280.878
848	445382.8623	4446110.185		898	444665.77	4443267.351
849	445451.6541	4445948.789		899	444492.63	4443057.219
850	445464.8833	4445901.164		900	444492.58	4443057.257
901	444464.4296	4442992.305		951	443709.16	4442672.753
902	444455.9629	4442971.139		952	443716.17	4442597.501
903	444438.3045	4442981.214		953	443717.75	4442566.545
904	444416.4764	4442990.475		954	443710.61	4442541.939
905	444358.2679	4443019.579		955	443696.32	4442518.126
906	444320.5647	4443034.131		956	443676.48	4442498.282
907	444298.0751	4443039.423		957	443651.08	4442460.976
908	444286.8303	4443039.423		958	443648.7	4442428.432
909	444267.648	4443024.87		959	443658.22	4442384.776
910	444253.7573	4443010.98		960	443667.75	4442337.151
911	444232.5906	4443003.042		961	443669.34	4442297.463
912	444215.3926	4442996.428		962	443667.75	4442270.476
913	444194.8874	4442981.876		963	443659.02	4442245.869
914	444193.5645	4442969.308		964	443648.7	4442217.294
915	444212.7468	4442943.511		965	443641.55	4442193.482
916	444225.976	4442931.605		966	443593.14	4442150.619
917	444241.851	4442914.407		967	443512.17	4442078.388
918	444251.1115	4442898.532		968	443441.41	4442001.923
919	444259.049	4442870.089		969	443394.84	4442004.04
920	444259.049	4442845.615		970	443375.79	4441972.29
921	444253.7573	4442814.526		971	443353.56	4441937.365

922	444248.4656	4442800.636		972	443324.99	4441901.381
923	444252.4344	4442779.469		973	443305.94	4441870.689
924	444270.2938	4442761.609		974	443327.11	4441846.348
925	444283.523	4442742.427		975	443338.75	4441830.473
926	444288.8147	4442726.552		976	443347.21	4441792.373
927	444287.4917	4442710.016		977	443347.21	4441759.564
928	444272.2782	4442691.495		978	443349.33	4441737.339
929	444249.7885	4442688.187		979	443358.86	4441724.639
930	444231.2677	4442686.865		980	443383.2	4441708.764
931	444211.4239	4442689.51		981	443404.36	4441678.072
932	444182.3197	4442696.125		982	443407.54	4441655.847
933	444151.8925	4442698.771		983	443405.42	4441619.864
934	444137.3404	4442697.448		984	443399.07	4441597.639
935	444115.5122	4442695.464		985	443389.55	4441578.589
936	444093.0226	4442697.448		986	443386.37	4441553.189
937	444026.6562	4442709.795		987	443386.37	4441528.847
938	443966.4633	4442719.717		988	443346.16	4441490.747
939	443944.6352	4442720.378		989	443323.21	4441424.936
940	443932.7289	4442723.686		990	443333.53	4441416.999
941	443914.208	4442731.623		991	443339.88	4441431.286
942	443899.6559	4442736.915		992	443358.13	4441447.955
943	443886.4267	4442737.576		993	443375.59	4441462.243
944	443859.3069	4442726.332		994	443383.53	4441459.861
945	443842.7704	4442724.347		995	443384.33	4441449.543
946	443826.2339	4442713.764		996	443368.45	4441424.142
947	443793.8224	4442694.582		997	443358.93	4441397.949
948	443772.6556	4442680.029		998	443345.43	4441369.374
949	443755.4577	4442676.061		999	443328.76	4441346.355
950	443733.6295	4442672.753		1000	443323.21	4441326.511
1001	443319.2383	4441286.03		1051	442674.98	4440663.494
1002	443315.2695	4441270.948		1052	442678.29	4440600.656
1003	443298.6007	4441255.073		1053	442628.68	4440431.983
1004	443248.5944	4441246.342		1054	442542.42	4440221.556
1005	443211.2597	4441229.393		1055	442506.03	4440162.025
1006	443190.8923	4441219.409		1056	442482.88	4440119.03
1007	443177.5253	4441212.856		1057	442463.04	4440052.884
1008	443190.8923	4441194.653		1058	442449.81	4439960.28
1009	443247.3093	4441130.359		1059	442420.04	4439841.217
1010	443288.5843	4441111.309		1060	442343.98	4439652.701
1011	443295.7281	4441090.672		1061	442296.79	4439594.934
1012	443291.7593	4441070.034		1062	442265.04	4439452.058
1013	443281.4406	4441051.778		1063	442230.65	4439282.725
1014	443257.628	4441046.222		1064	442212.13	4439182.183

1015	443222.703	4441044.634		1065	442135.4	4439078.995
1016	443154.9866	4441046.822		1066	442045.44	4438957.287
1017	443134.5965	4441045.428		1067	442000.46	4438830.286
1018	443113.959	4441051.778		1068	441893.36	4438708.26
1019	443074.2714	4441065.272		1069	441853.14	4438638.41
1020	443041.7276	4441068.447		1070	441795.34	4438540.904
1021	443017.1213	4441062.097		1071	441766.36	4438477.543
1022	442998.865	4441050.984		1072	441743.07	4438325.143
1023	442992.515	4441037.49		1073	441734.61	4438221.426
1024	443004.4213	4441036.697		1074	441704.97	4438132.526
1025	443034.5838	4441035.109		1075	441690.16	4438024.576
1026	443063.9526	4441030.347		1076	441670	4437899.65
1027	443085.3839	4441020.028		1077	441639.31	4437831.916
1028	443128.6633	4441001.195		1078	441634.02	4437798.049
1029	443172.6966	4440986.69		1079	441611.8	4437782.174
1030	443189.3654	4440973.99		1080	441584.28	4437752.541
1031	443184.6029	4440963.671		1081	441566.29	4437702.799
1032	443175.0779	4440963.671		1082	441555.7	4437655.174
1033	443157.6153	4440966.053		1083	441549.35	4437629.774
1034	443132.2153	4440968.434		1084	441521.84	4437626.599
1035	443106.003	4440961.917		1085	441379.62	4437706.9
1036	443032.2026	4440921.761		1086	441320.09	4437749.895
1037	442981.4025	4440883.661		1087	441273.79	4437766.432
1038	442946.4774	4440863.024		1088	441164.65	4437776.354
1039	442911.5523	4440869.374		1089	441062.12	4437786.275
1040	442862.3397	4440920.174		1090	440860.38	4437796.197
1041	442830.5897	4440931.286		1091	440701.63	4437796.197
1042	442814.7146	4440902.711		1092	440617.62	4437806.781
1043	442811.5396	4440872.549		1093	440592.49	4437835.885
1044	442789.3146	4440848.736		1094	440573.97	4437862.343
1045	442770.2646	4440834.449		1095	440556.77	4437883.51
1046	442740.102	4440805.874		1096	440507.82	4437903.354
1047	442694.0644	4440770.948		1097	440453.58	4437927.166
1048	442682.9519	4440739.198		1098	440415.22	4437962.885
1049	442646.4393	4440697.923		1099	440374.2	4437978.76
1050	442631.1689	4440689.782		1100	440349.07	4437995.958
1101	440319.9652	4438005.219		1151	438756.28	4436874.028
1102	440301.4443	4437939.073		1152	438683.52	4436874.028
1103	440279.1699	4437899.935		1153	438604.14	4436874.028
1104	440258.3776	4437846.139		1154	438508.23	4436903.793
1105	440235.0942	4437818.622		1155	438461.93	4436940.174
1106	440205.4608	4437795.339		1156	438405.7	4436976.554
1107	440188.5274	4437767.822		1157	438311.38	4437043.494
1108	440169.4774	4437740.306		1158	438311.38	4437011.744

1109	440082.6939	4437725.489
1110	439993.7937	4437706.439
1111	439942.9936	4437683.155
1112	439885.8435	4437642.939
1113	439803.2933	4437626.005
1114	439769.4266	4437638.705
1115	439731.3265	4437647.172
1116	439638.193	4437670.455
1117	439619.3667	4437675.386
1118	439551.4999	4437679.423
1119	439528.4811	4437677.836
1120	439495.1435	4437673.073
1121	439445.576	4437687.389
1122	439393.2787	4437675.19
1123	439379.5204	4437664.606
1124	439363.6453	4437643.44
1125	439279.8335	4437550.455
1126	439273.2096	4437541.614
1127	439239.006	4437519.248
1128	439205.1693	4437520.173
1129	439169.1733	4437520.995
1130	439130.2099	4437537.22
1131	439101.974	4437547.125
1132	439074.7198	4437536.548
1133	439064.1364	4437523.848
1134	439056.7281	4437505.856
1135	439049.452	4437484.028
1136	439035.1645	4437437.99
1137	439006.5894	4437398.303
1138	438968.4894	4437372.903
1139	438930.3893	4437360.203
1140	438881.1767	4437345.915
1141	438847.8391	4437331.628
1142	438875.3393	4437267.596
1143	438901.7977	4437224.601
1144	438915.0269	4437168.377
1145	438915.0269	4437112.153
1146	438888.5685	4437069.158
1147	438842.2663	4437032.778
1148	438832.3444	4436983.168
1149	438825.7298	4436933.559
1150	438799.2714	4436897.179



