

10th August, 2012

LEGAL NOTICE NO. 86

THE FISHERIES ACT
(Cap. 378)

IN EXERCISE of the powers conferred by section 5 of the Fisheries Act, the Director of Fisheries, with the approval of the Minister of Fisheries Development declares the geographical areas specified in the first column, within the coordinates specified in the second column, of Part I of the Schedule in the areas of Lake Naivasha described in Figure 1 in Part II of the Schedule as breeding areas and impose the following management measures.

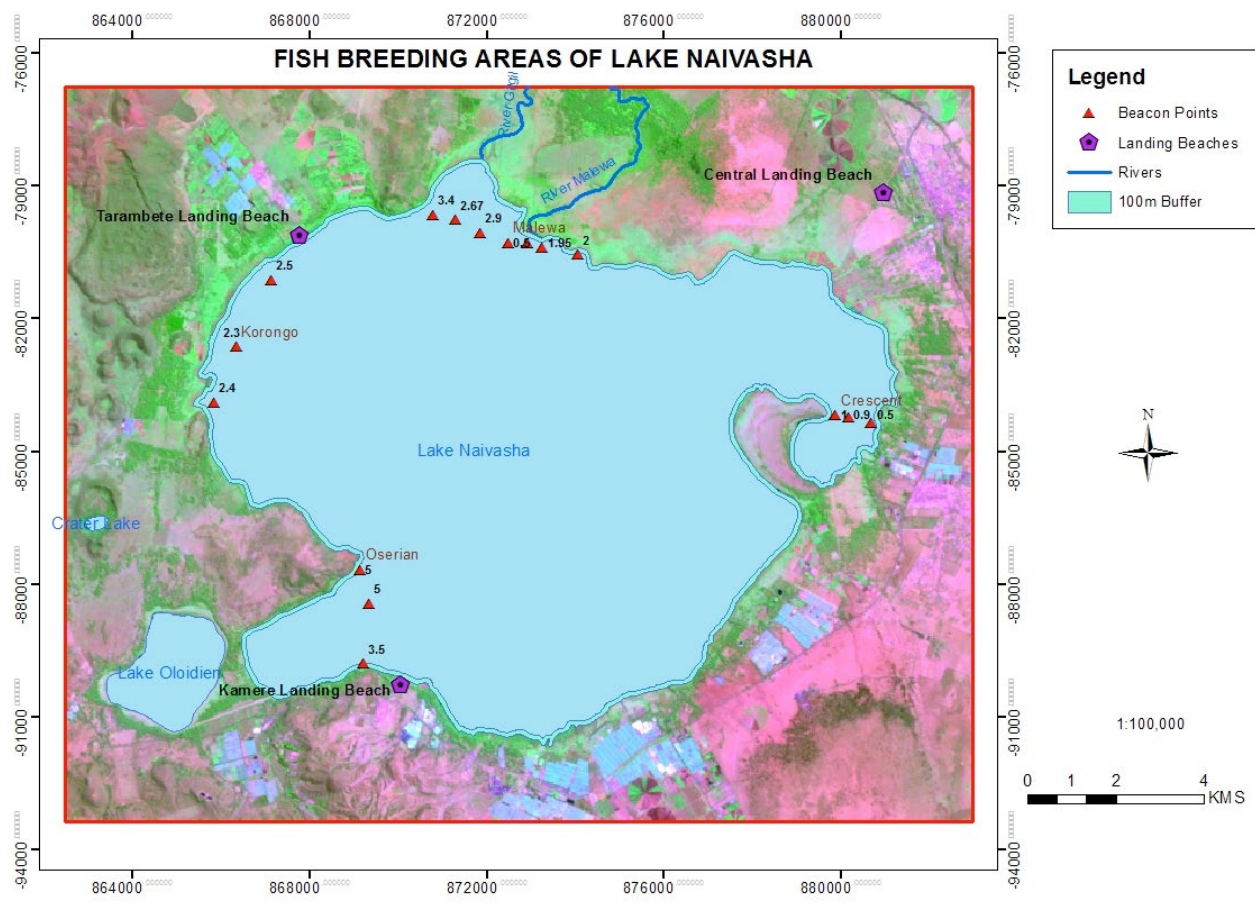
- (a) Fishing is prohibited in the breeding areas specified in the Schedule.
- (b) The breeding areas specified in the Schedule shall be identified by marker buoys.
- (c) In addition to the breeding areas specified in the Schedule, fishing is prohibited in—
 - (i) Any area measuring 100 meters inshore; and
 - (ii) Any point in the lake which is 1 meter or less in depth.

SCHEDULE

PART 1

	Coordinates	
Name of breeding Area	Latitude 0°	Longitude 0°
Malewa River Mouth	-0.72509 S	036.34913 E
	-0.72528 S	036.34976 E
	-0.72308 S	036.34019 E
	-0.72234 S	036.34008 E
	-0.72040 S	036.34511 E
	-0.71454 S	036.34337 E
	-0.72606 S	036.35281 E
	-0.72753 S	036.35992 E
Korongo area	-0.74642 S	036.29071 E
	-0.73276 S	036.29789 E
	-0.75773 S	036.28619 E
Oserian Bay	-0.79190 S	036.31582 E
	-0.79873 S	036.31762 E
	-0.81100 S	036.3165 E
Crescent Island	-0.76230 S	036.41232 E
	-0.76077 S	036.41499 E
	-0.76174 S	036.41958 E

PART II



Dated the 16th July, 2012.

G. V. MONOR,
Director of Fisheries.